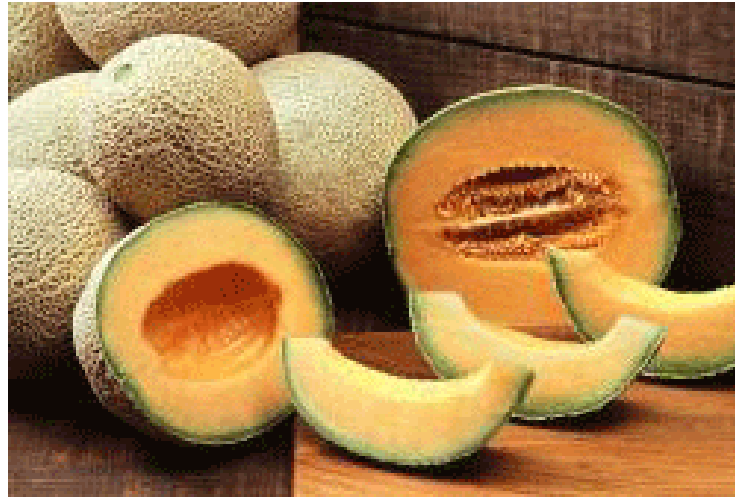
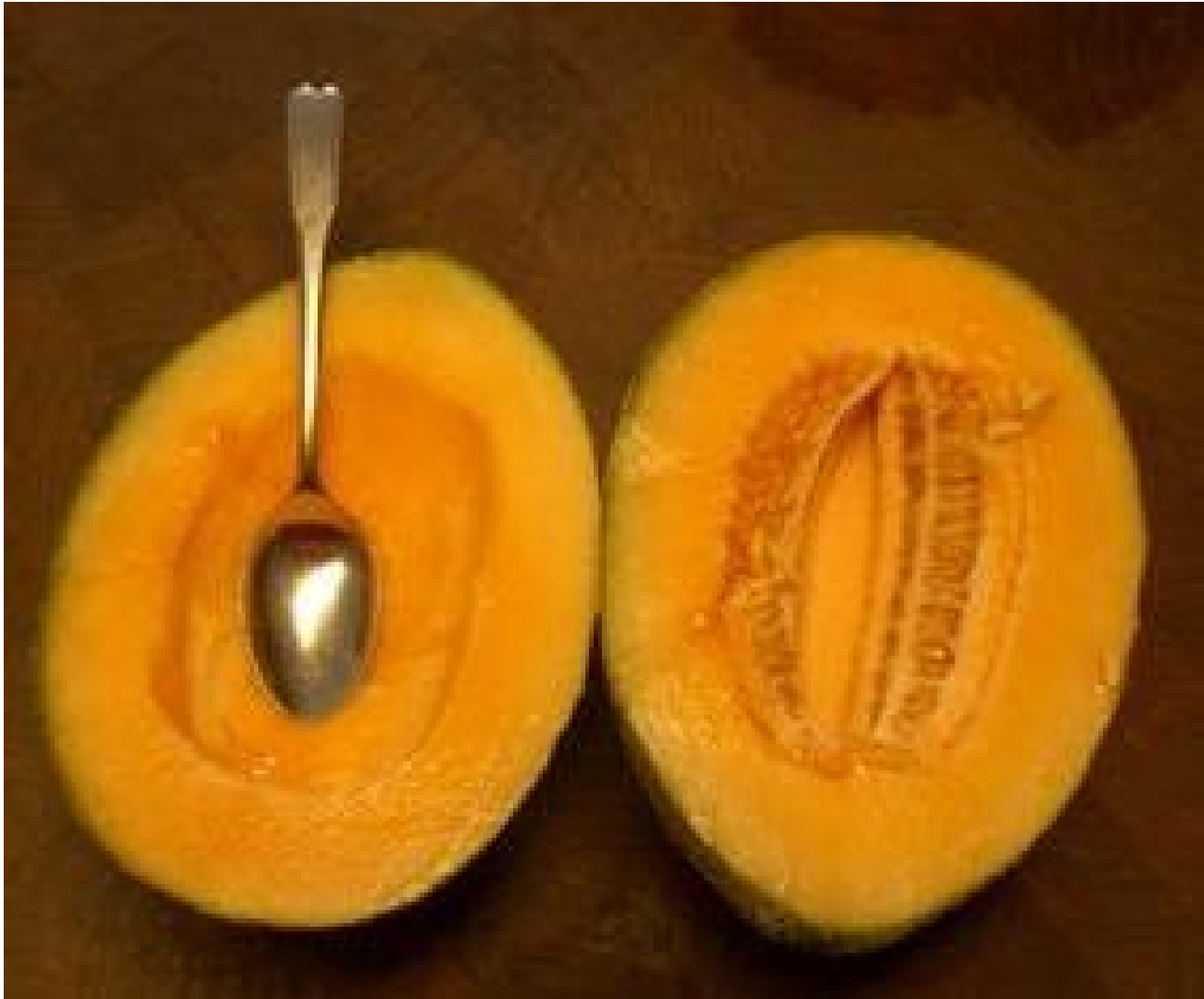
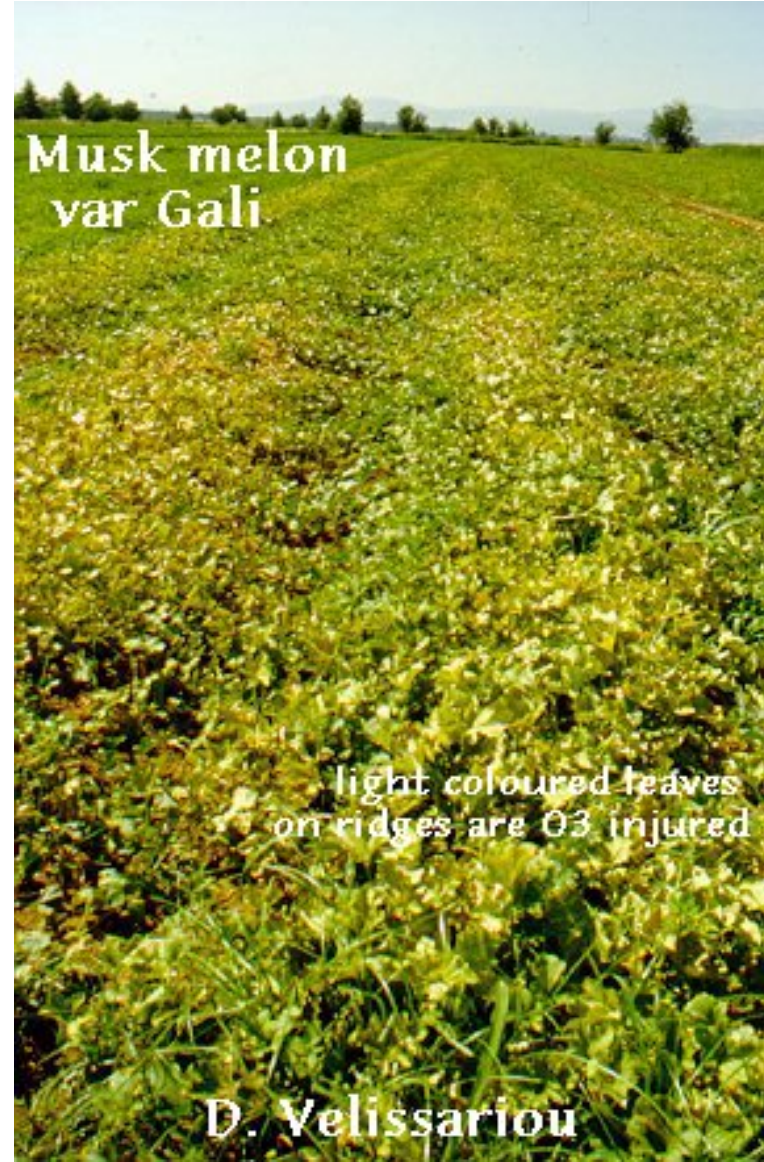
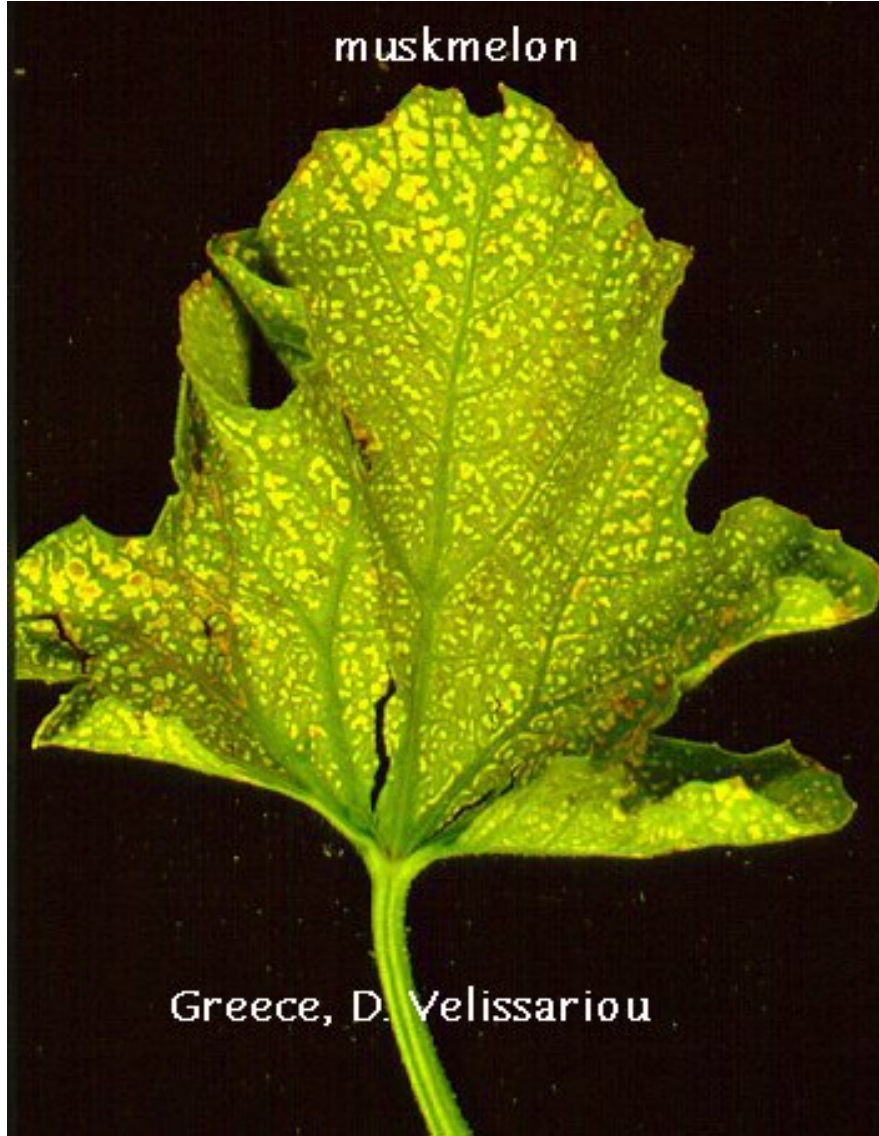


اعداد الاستاذ الدكتور حسام عبد النبي من خلال الاستعانه بالمواقع المختلفه على شبكه الانترنت

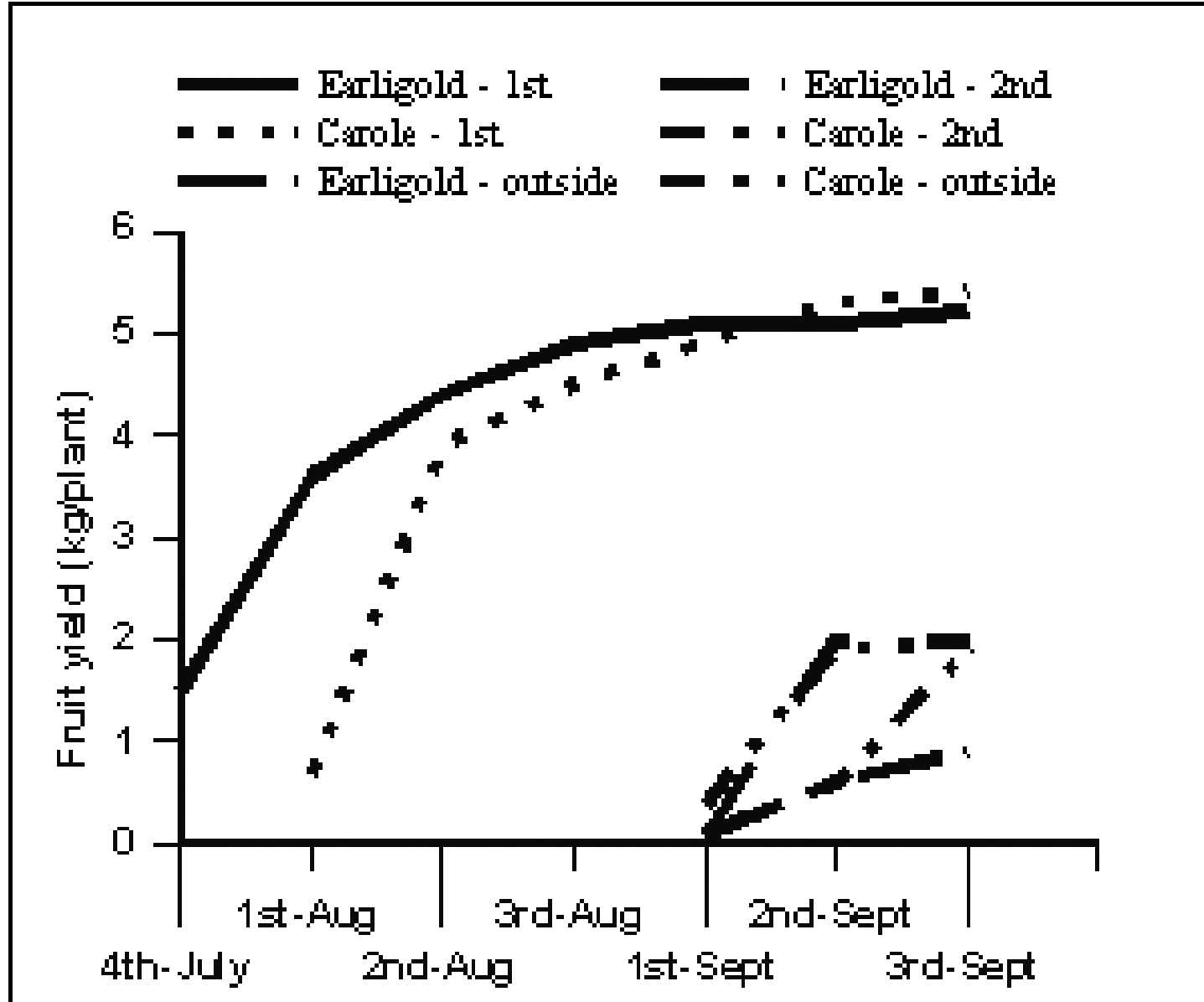
# القفاون





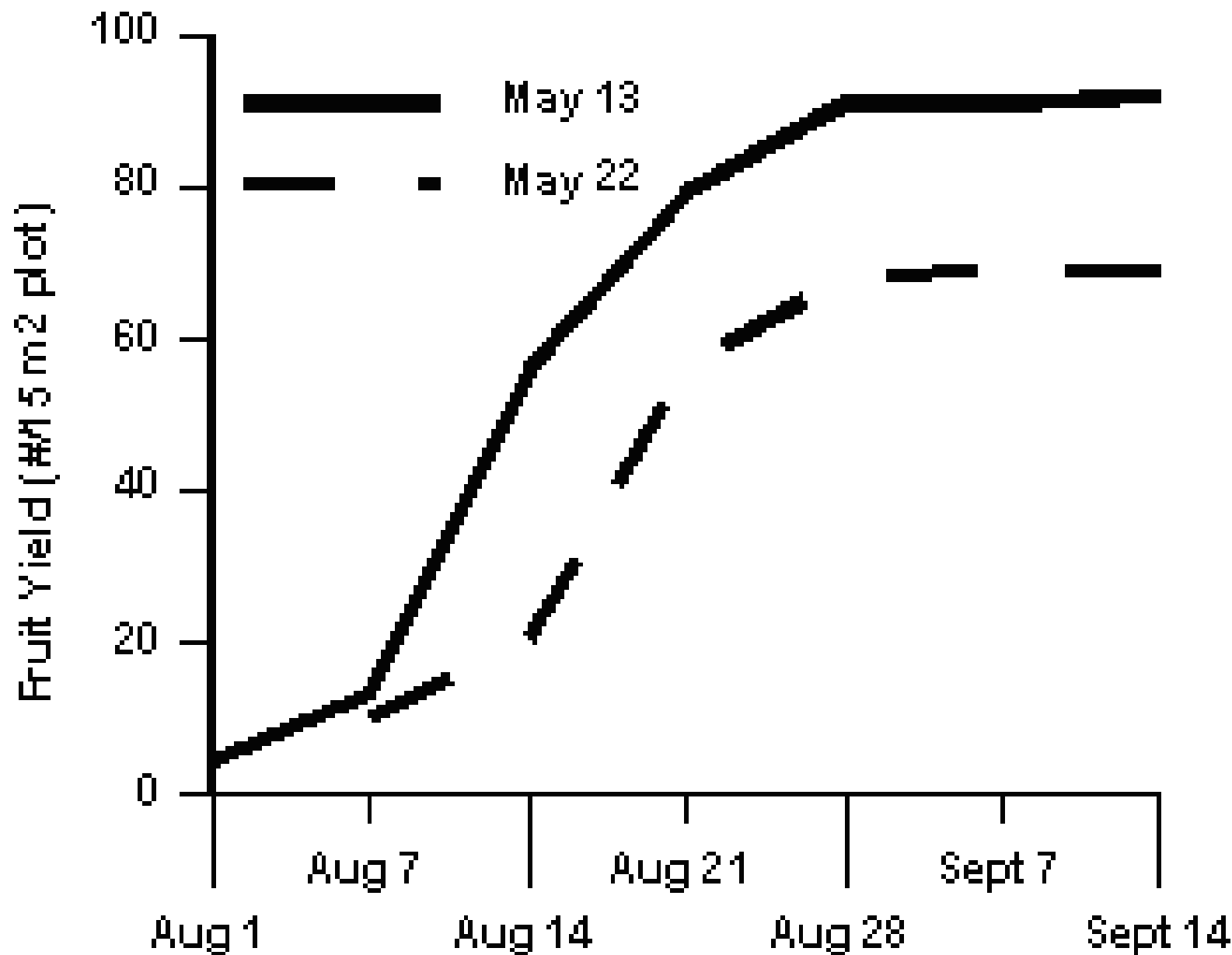


Ozone injury



Yields for Earligold and Carole melons for two planting dates inside the high tunnels compared to standard production.

# High Tunnel - Melon Yields





**Stem end**

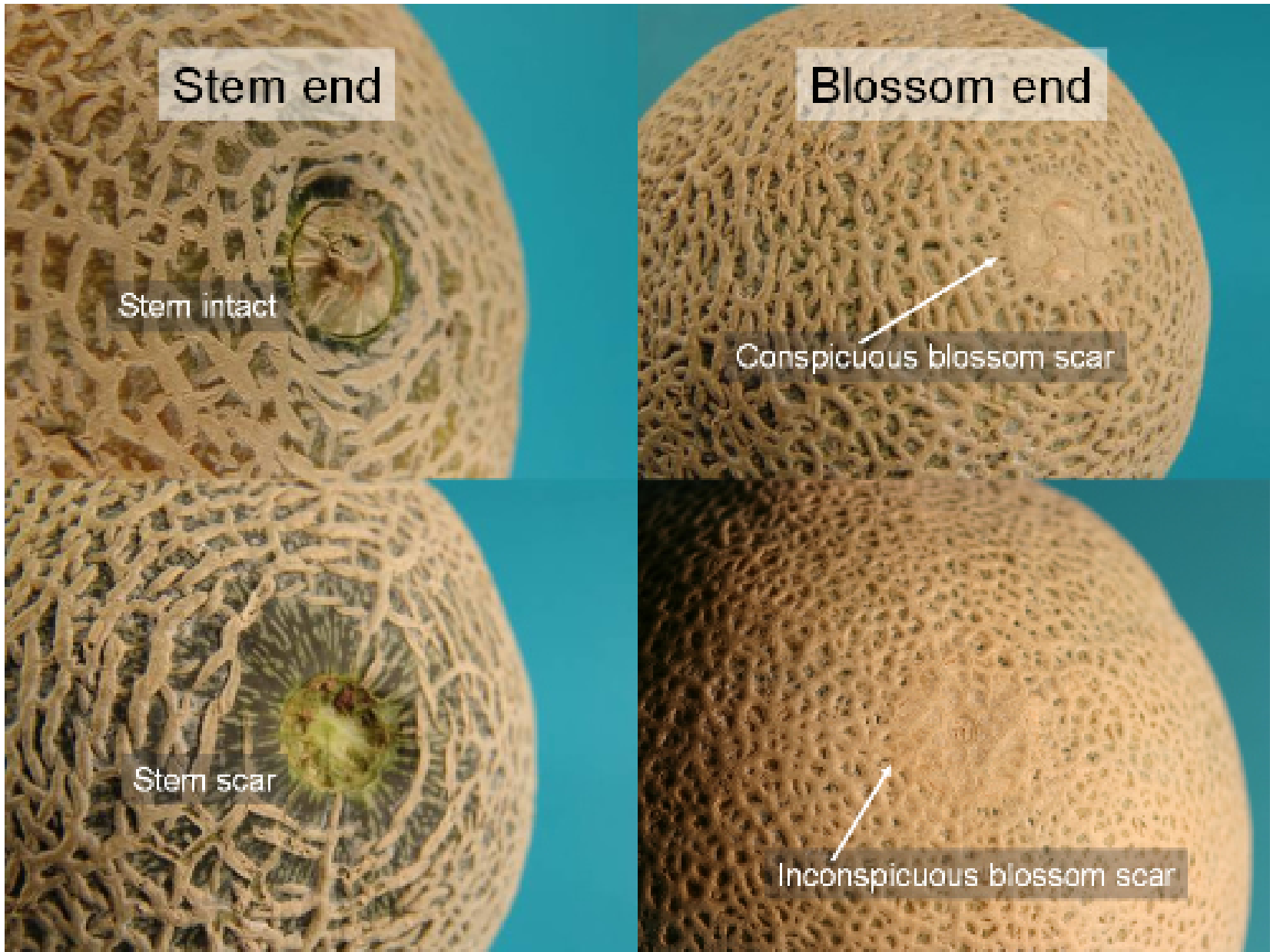
Stem intact

**Blossom end**

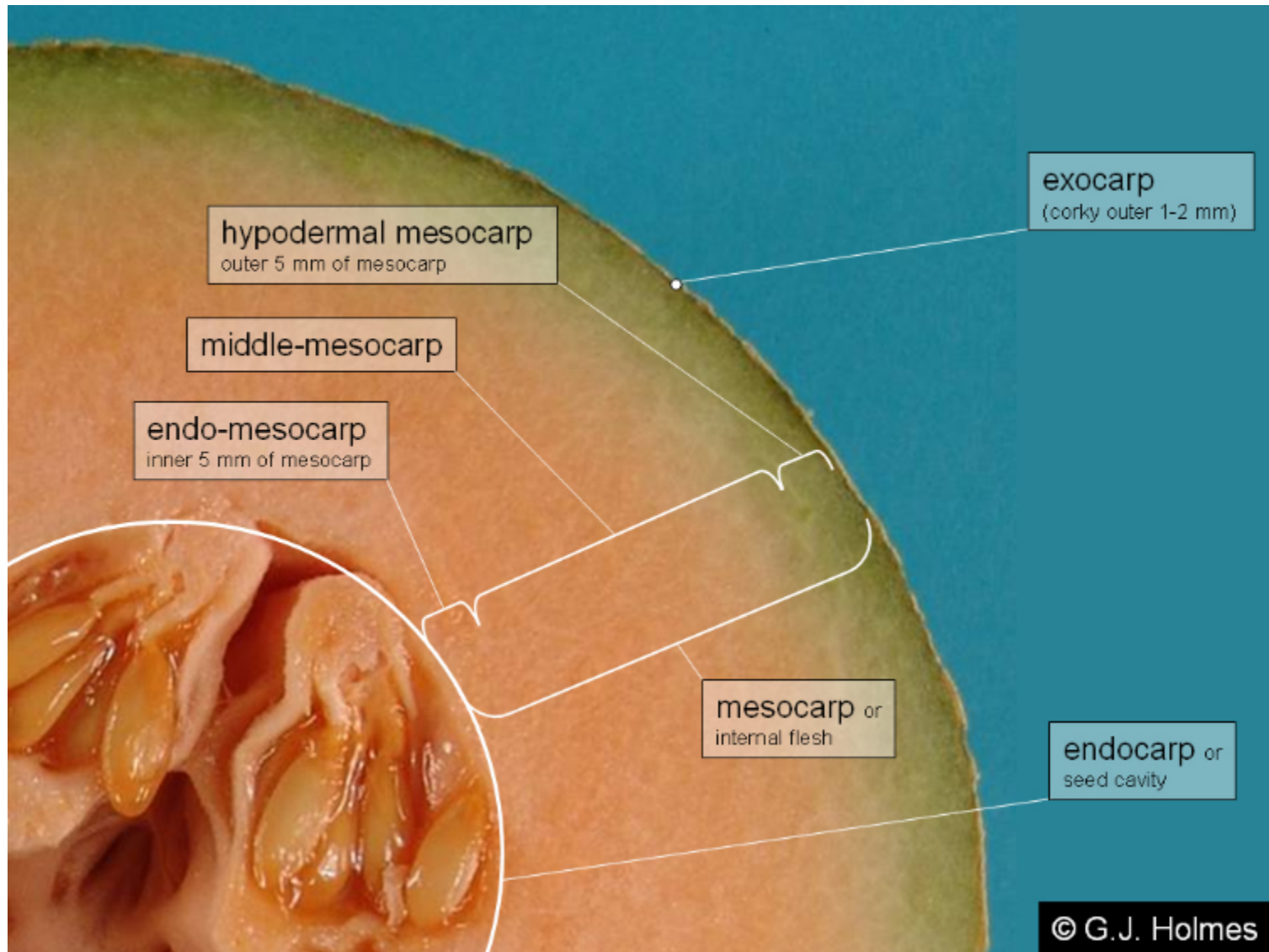
Conspicuous blossom scar

Stem scar

Inconspicuous blossom scar











Effect of plastic mulch on yield of muskmelons, cv. Burpee hybrid, Ames, Iowa, 1978 to

| Treatment | 1978   | 1979 | 1980 | 1982 | 1991 | 1992 | Average |
|-----------|--|------|------|------|------|------|---------|
|           | Early yield, cwt/acre  |      |      |      |      |      |         |
| no soil   | 42   | 62   | 84   | 32   | 40   | 50   | 52      |
| plastic   | 55   | 173  | --   | 148  | 78   | 113  | 113     |
| plastic   | 167  | 227  | 383  | 155  | 118  | 175  | 204     |
|           | Total yield, cwt/acre  |      |      |      |      |      |         |
| no soil   | 217  | 434  | 441  | 188  | 399  | 237  | 319     |
| plastic   | 293  | 478  | ---  | 250  | 475  | 351  | 369     |
| plastic   | 269  | 535  | 592  | 273  | 427  | 334  | 405     |
| NOTE:     | Transplants were set early part of May and early harvest was late July to early A<br>Total yield to first week of September. Soil type = fine, sandy loam; well dr |      |      |      |      |      |         |





Ripe muskmelon fruit







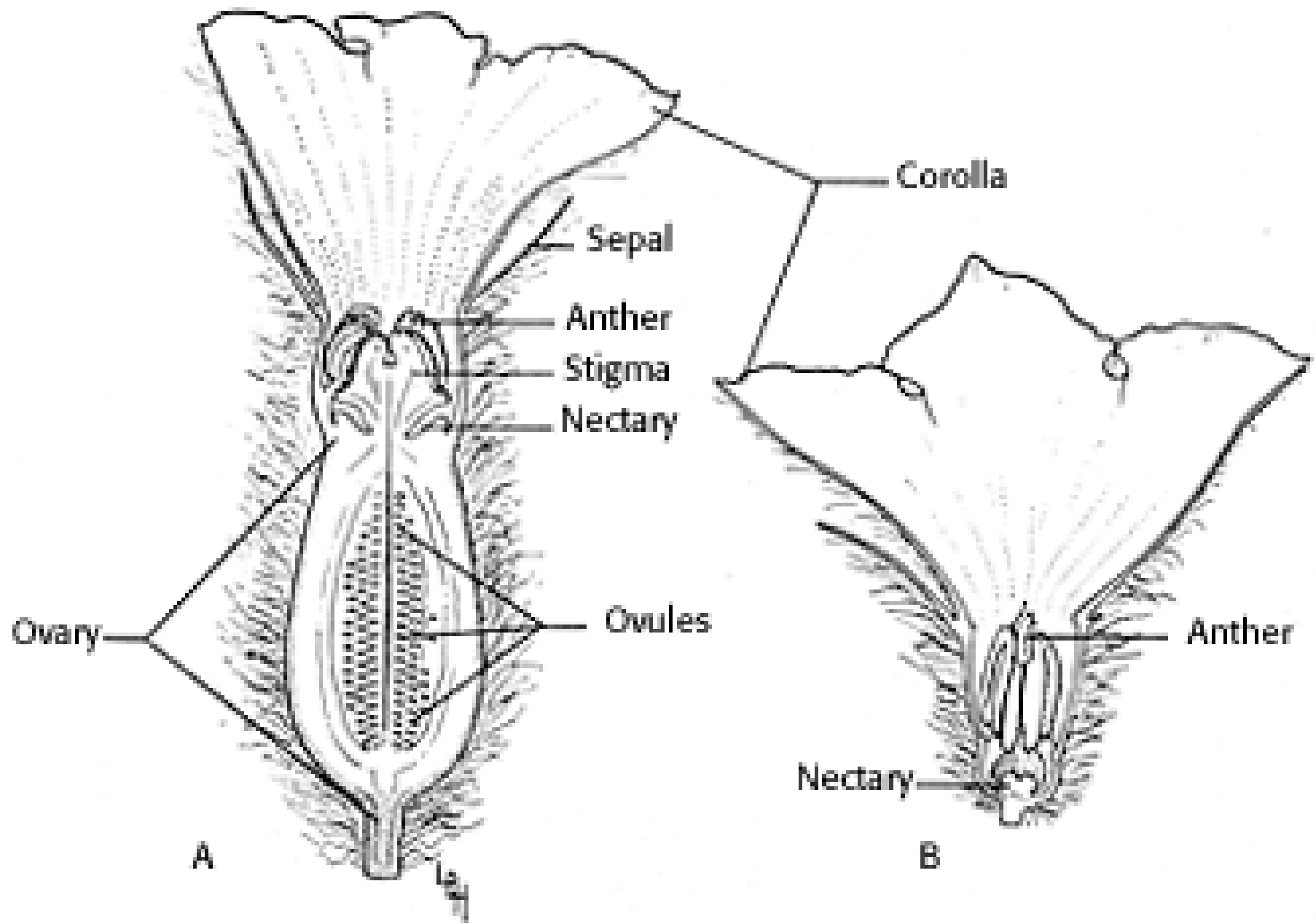


Figure 129. - Longitudinal section of muskmelon flower, x4.  
A, Hermaphrodite; B, staminate.







Copyright © 2004 - Victory Seed Company  
[www.VictorySeeds.com](http://www.VictorySeeds.com)



Copyright © 2003 - The Victory Seed Company  
www.VictorySeeds.com



'Hales Best Jumbo'

Copyright © 2003 - The Victory Seed Company  
www.VictorySeeds.com





Copyright © 2002 - David Pendergrass

Copyright © 2003 - The Victory Seed Company  
[www.VictorySeeds.com](http://www.VictorySeeds.com)



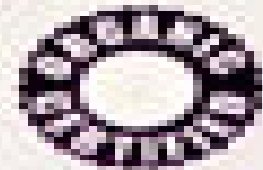
Copyright © - 2004 - - New Hope Seed Company



# Muskmelon (Cantaloupe)

## Hearts of Gold

*Cucumis melo - Melonaceae Group*



**\$1.89**

**Net Weight**

**1.25 grams**

75 days

Warm season  
crop - plant after  
last chance of  
spring frost.

---

Once you have  
tasted this  
variety, you will  
understand  
why it wins  
taste tests.

Great for short  
season climates,  
very productive.

---



**Botanical Interests** TM



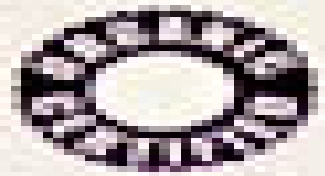
Copyright © 2004 - Victory Seed Company  
[www.VictorySeeds.com](http://www.VictorySeeds.com)



# Muskmelon (Cantaloupe)

## Hale's Best Jumbo

*Cucumis melo - Melonaceae Group*



**\$1.89**

**Net Weight**

**1 gram**

85 days  
Warm season  
crop - plant after  
last chance of  
spring frost.

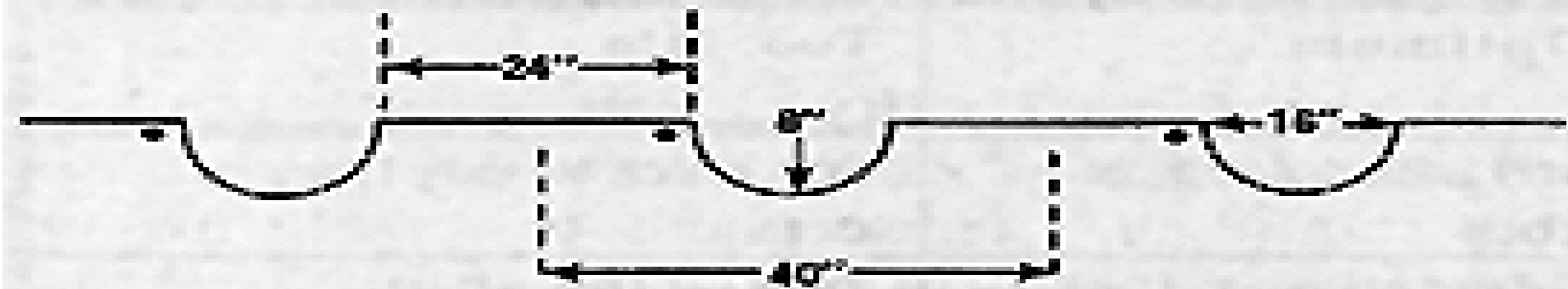
---

Fabulous flavor!  
An old time  
favorite. Hale's  
Best has very  
thick, sweet  
salmon-pink  
flesh with a  
small seed  
cavity.

---

***Botanical Interests*** INC.

**Fig. 1. Standard vegetable beds.**



When beds have been properly worked, plant seed on one or both sides of the bed and then irrigate. Soak water by capillary action through the soil to the middle of the bed.



Continue to irrigate as needed, concentrating salts in the soil and water in the middle of the bed away from plants.



Early symptoms of bacterial wilt on muskmelon  
[ Picture by R. Latin ]



24 days later after planting. harvested.



Seedcorn maggot injury to muskmelons  
[ Picture by G. Brust ]



Cucumber beetle feeding damage to muskmelon leaves  
[Picture by A. York ]



Later symptoms of bacterial wilt on muskmelon  
[ Picture by R. Latin ]



An immature muskmelon is green with a smooth rind, and may have shallow grooves depending on the cultivar













**Phytophthora Foliar Blight and Fruit Rot**  
*University of Illinois-Babadoost*