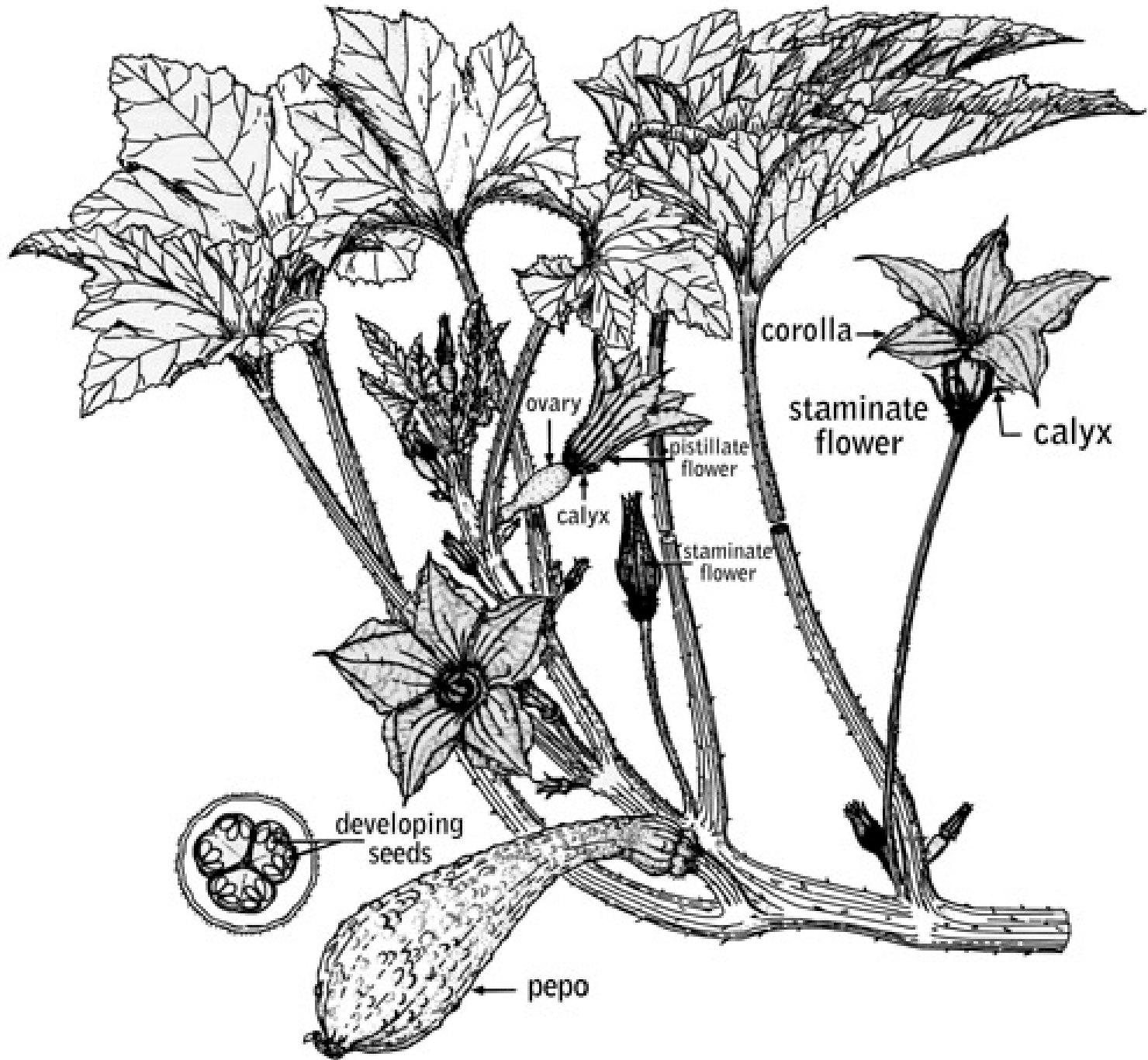


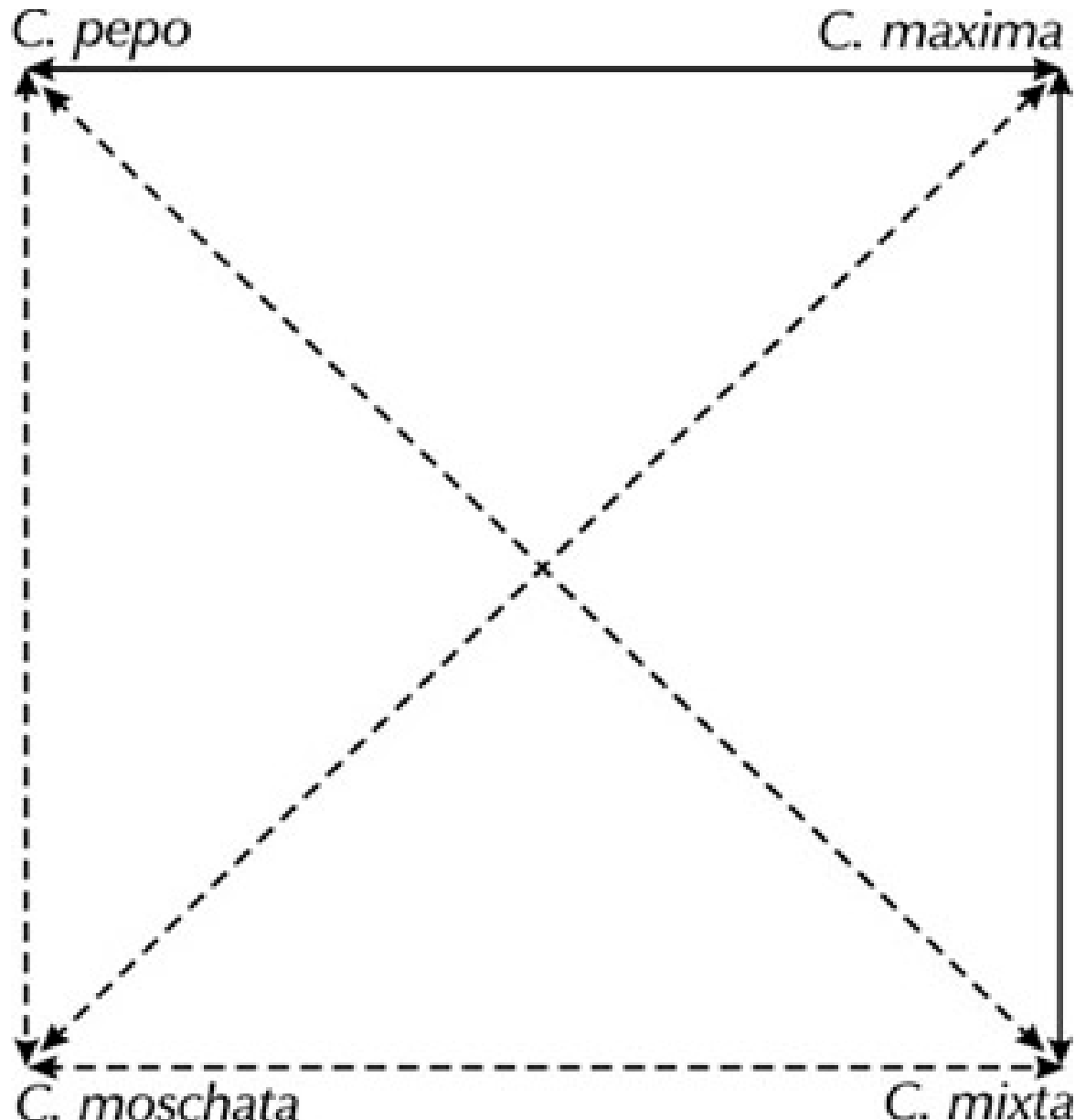
اعداد الاستاذ الدكتور حسام عبد النبي من خلال الاستعانه بالمواقع المختلفه على شبكه الانترنت

فرع الكوسية





The following diagram indicates the crosses that can or cannot occur between plants in the genus *Cucurbita*





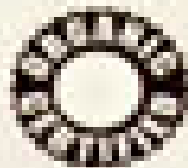
weeding around **squash plants**







# Squash Summer Black Beauty Zucchini



*Cucurbita pepo*

\$1.89

Net Weight  
3 grams

55 days  
Warm season  
crop - plant  
after last chance  
of spring frost.

Very tender,  
creamy white,  
flavorful flesh.  
Compact, bush-  
like growth.  
Can be picked  
as "baby"  
vegetable!

*Botanical Interests*™





*Extra fancy, fancy, and large yellow squash*



Copyright © 2002 - DavidGeier.com  
Used at VictorySeeds.com with permission.









**Squash Winter**  
**Delicata Honey Boat**   
*Cucurbita pepo*



**\$2.99**  
**Net Weight**  
**2.5 grams**

90 days  
 Warm season crop - plant after last chance of spring frost.

Sweet as honey, this small Delicata is a gourmet delight! Full of nutrition and flavor, winter squash is a warm reminder of summer's bounty.

*Botanical Interests*™



**'Winter Squash F1 'Bonbon**

**Squash Sunburst**



**Squash Summer**  
**Early Prolific Straightneck**   
*Cucurbita pepo*



**\$1.79**  
**Net Weight**  
**3 grams**

45 days  
 Warm season crop - plant after last chance of spring frost.

An All America Selection in 1936, Straightneck is still very popular because of its thick, tasty flesh. Resistant to squash bug.

*Botanical Interests*™



















Summer Squash





















planting squash. Raised bed with drip tape















.This is a big male flower that just glowed in the morning light













Planting the summer squash under slitted row cover







*Powdery mildew on squash leaf*





Yellow mosaic virus infection





Grilled summer squash