



Handwritten signature and date: 01/05/10



Mansoura University

Faculty of Agriculture

Final Exam of Agr.311 Crop Production 1

2<sup>nd</sup> Semester 2012/2013

Time allowed: Two Hours

Exam Date: 25/5/2013

---

Exam Answer in 4 pages (60 Marks)

---

1. Why we are planting field bean with recommended seeding rates? (10 Marks).

2. Put sign true or false before the following sentences (15 Marks):

1-( ) Planting field bean at optimum planting date increases the period of vegetative growth consequently increase the period of photosynthesis and increase competition between field bean plants then decrease grain yield.

2-( ) In lately Field bean planting than optimum date the vegetative growth period will be reduced, consequently the period of photosynthesis increase causing reduction in seed yield.

3-( ) The large-seeded broad beans or Windsor beans and called (*Vicia faba* var. minor)

4-( ) Chickpea dry matter; stem and branching will be decrease as light intensity increased.

5-( ) Chickpea sown at optimum stand, increase number of plant per unit area which reflected plants will be less approached to uniformity which helps sun radiation penetration.

6-( ) Reducing in light intensity during lentil growth reducing branching, shortest plants and increasing in NP uptake.

7-( ) In early lentil sown, germination percentage may be increase due to higher soil temperature which increase seedling emerge and reduce plant population.

8-( ) Sown lentil with more than optimum seeding rate leading to decrease competition between lentil plants reflected increase net photosynthesis reflected increases in seed number and size then increase seed yield per unit area.

9-( ) Sudan grass can be harvested as pasture, green chop or silage, but is superior in forage yields to other sorghums only when used for hay.

10-( ) Egyptian clover sown by broadcasting (Ala El-Lama) in absent of water after soil levelling (settlement) for increasing seed germination.

11-( ) Egyptian clover need a moderate temperature for vegetative growth and increases in temperature push plants to early flowering reflected decreases in number of cuts.

12-( ) Alfalfa is the most cultivated forage legume in the world, drought tolerant forage legume which contains 15% crude protein.

13-( ) Most rhizomatous alfalfa cultivars are characterized by heavy and aggressive root.

14-( ) Suitable soil moisture environment for alfalfa forage tend to be luxuriant vegetative growth, higher dry-matter yield and better forage quality.

15-( ) Alfalfa plants will be cut when it was 20-25 cm above soil surface 5-6 cm.

**3. Select the appropriate answer from the following questions (20 Marks):**

1-Yung leaves turn yellowish to black and cured or cupped brown spots is deficiency symptoms of

- a) boron.                      b) nitrogen.                      c) sulphur.                      d) calcium.

2-Leaves frequently misshapen and crinkled, thick and brittle, white, irregular spots between veins is deficiency symptoms of

- a) boron.                      b) zinc.                      c) iron.                      d) manganese.

3- The highest in total production country of wheat in

- a) Pakistan.                      b) India.                      c) China.                      d) Ethiopia.

4- Wheat growth and production are best in the soil of

- a) deep or silty clay loams.  
c) saline soil.
- b) calcic soil.  
d) sandy soils.

5- The optimum seeding rate for a wheat crop when sown with

- a) 40-50 kg/fed.    b) 50-60 kg/fed.    c) 50-60 kg/fed.    d) 60-90 kg/fed.

6- The most suitable planting methods in Delta region of wheat is

- a) broadcasting.  
c) drilling at rows 20 cm.
- b) drilling at rows 10 cm.  
d) drilling at rows 30 cm.

7- Wheat cultivar cultivate for make semolina flour for pasta is

- a) Sakha 93.      b) Gemmiza 7.      c) Sakha 92.      d) Bani Swife 5

8- The flag leaf and ligule are just visible at stage No.

- a) stage 3.      b) stage 5.      c) stage 7.      d) stage 9.

9- The average productivity of wheat per hectare in Egypt is

- a) 7421 kg ha<sup>-1</sup>.    b) 8421 kg ha<sup>-1</sup>    c) 9421 kg ha<sup>-1</sup>.    d) 9821 kg ha<sup>-1</sup>.

10- The optimum planting date in Delta region of rice is

- a) first April.
- b) mid-July.
- c) the fourth week of June.
- d) first May

11. Reduces in temperature during rice growth to 15C° reflected in

- a) reduced growth.                      b) reduce in number of tillers.  
c) increase in dry weight.              d) late in tiller formation and maturation.

12- Rice cultivar cultivated at spaces of 15X15 cm is

- a) Giza 177.      b) Giza 178.    c) Sakha 101.      d) Sakha 104

13-.Rice nursery prepared to planting 10 feddans must be in

- a) 10-15 Kerat.      b) 15-20 Kerat.      c) 20-30 Kerat.      d) 40-50 Kerat.

14- The highest country in total of productivity produced of maize in the world is

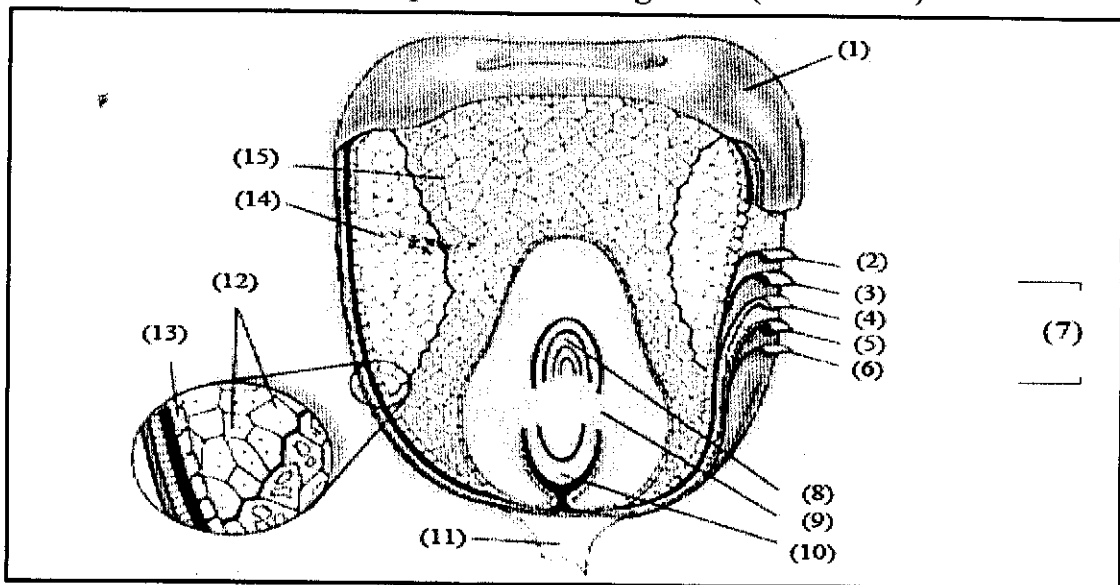
- a) India.                      b) USA.                      c) China.                      d) Egypt

15- The optimum seeding rate for a maize crop when sown with

- a) 8-10 kg/fed.      b) 8-12 kg/fed.      c) 10-12 kg/fed.      d) 12-15 kg/fed.

- 16- The optimum planting date in Delta region of maize is  
 a) first June.      b) First July.      c) First April.      d) First May.
- 17- Double cross hybrid yellow in its grain is  
 a) Amon.      b) Taba.      c) Sultan.      d) T.C.352.
- 18- The open pollinated maize cultivar is  
 a) Giza 2.      b) Dahab.      c) Hedia.      d) Amon.
- 19- The highest production country of field bean over world is in  
 a) Pakistan.      b) India.      c) Turkey.      d) Ethiopia.
- 20- The optimum temperature for field bean germination is  
 a) 10°C.      b) 15°C.      c) 20°C.      d) -30°C.

4-Please put words in its place on corn grain? (15 Marks):



Answer:

- |     |     |
|-----|-----|
| 1-  | 2-  |
| 3-  | 4-  |
| 5-  | 6-  |
| 7-  | 8-  |
| 9-  | 10- |
| 11- | 12- |
| 13- | 14- |
| 15- |     |

With our wishes.....