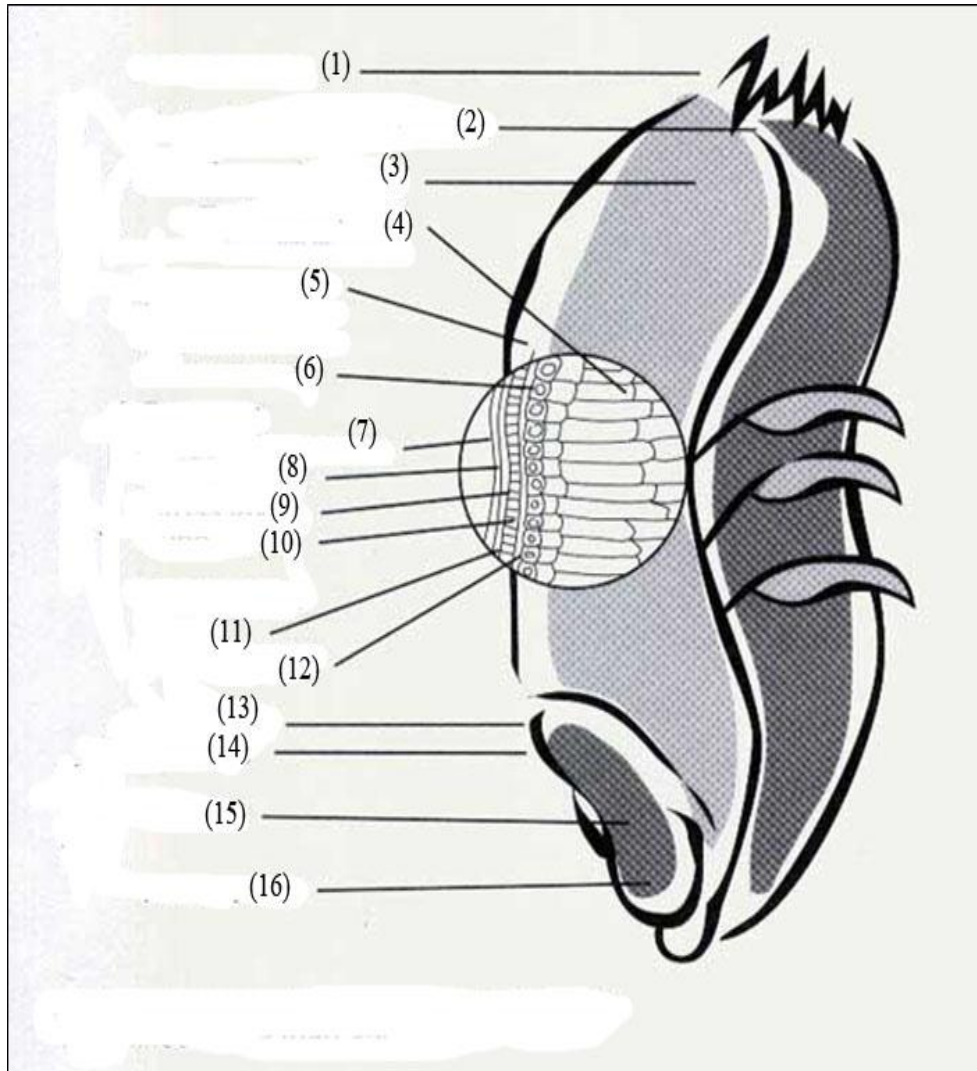


1-Please put the following words in its place on the following figure?

Alyeuron layer -Aleurone cell -Epiderms -Scutelum -Plumule -
 Radicle - Radicle cap -Hypoderms -Cross layer -Tube calles - Testa -
 Hyline layer -Hairs -External portion of crease -Starchy endosperm -
 Aleurone cell

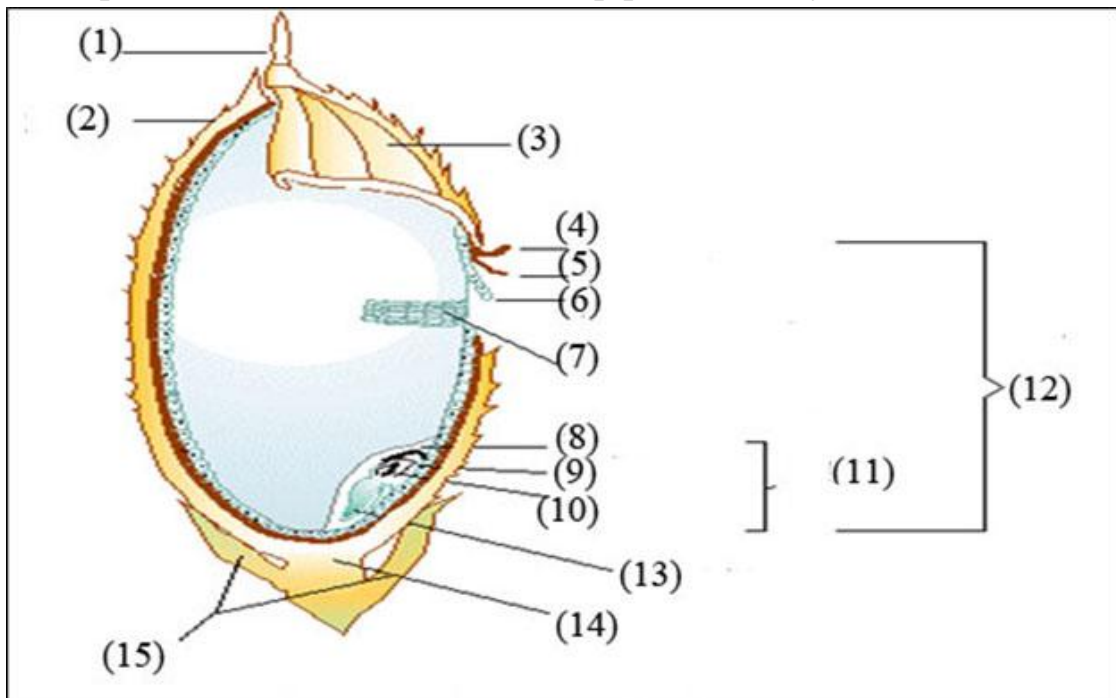


Answer:

1-Hairs 2-External portion of crease 3-Starchy endosperm 4-
 Alyeurone cell 5-Aleurone layer 6-Aleuron cell 7-Epiderms 8-
 Hypoderms 9-Cross layer 10-Tube calles 11- Testa 12-Hyline layer 13-
 Scutelum 14-Plumule 15-Radicle 16- Radicle cap.

2-Please put the following words in its place on the following figure?

Pericarp -Escutellum -Brown rice (Caryopsis) -Tegmen -Awn -
 Palea -Racheilla -Lemma -layer -Steril lemma - Starchy
 Endosperm -Plumule - Aleurone -Epiplast -Embryo -Radicale

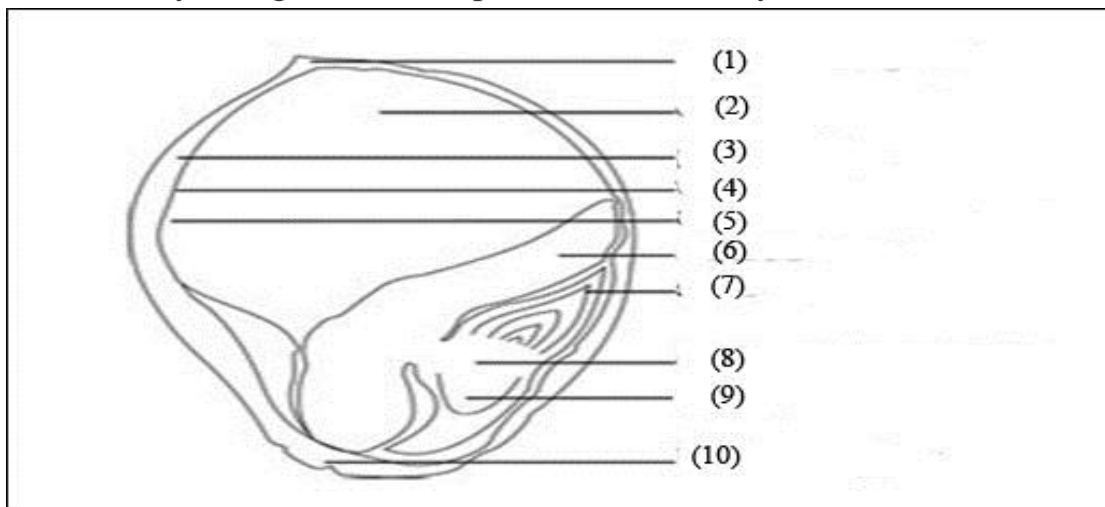


Answer:

1-Awn 2-Palea 3-Lemma 4-Pericarp 5-Tegmen 6- Aleurone
 layer 7- Starchy Endosperm 8-Escutellum 9-Epiplast 10-Plumule
 11-Embryo 12-Brown rice (Caryopsis) 13-Racheilla 14-Radicale 15-
 Steril lemma.

3- Please put the following words in its place on the following figure?

- Embrtonic axis -Root -Hilar region -Pericarp - Testa - scutellum -
 Shoot -Stylar region -Endosperm -Aleurone layer.

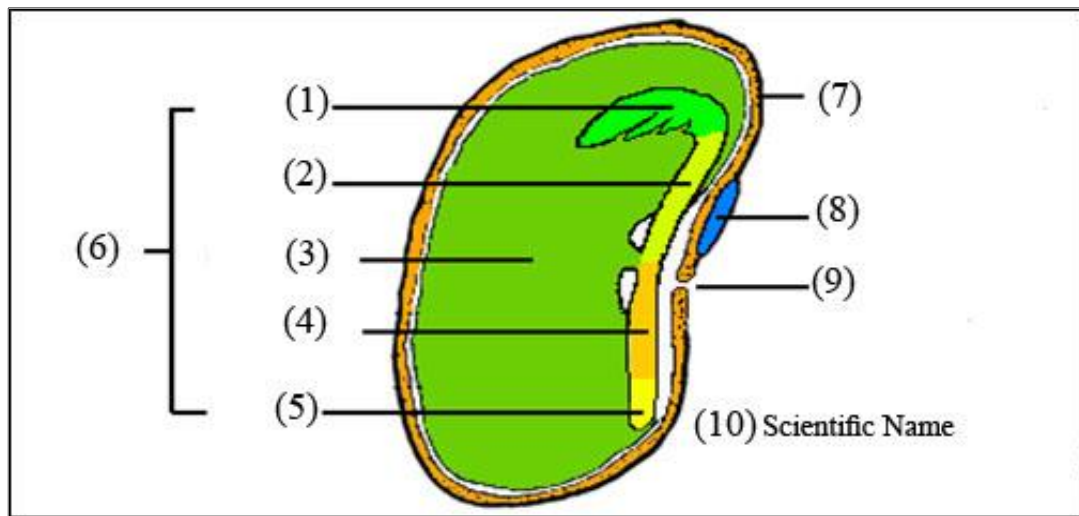


Answer:

1-Awn 2-Palea 3-Lemma 4-Pericarp 5-Tegmen 6- Aleurone layer 7- Starchy Endosperm 8-Escutellum 9-Epiplast 10-Plumule 11-Embryo 12-Brown rice (Caryopsis) 13-Racheilla 14-Radicale 15-Steril lemma.

4- Please put the following words in its place on the following figure?

-Radicule -Embryo -Seed coat - Hilum - Plumule -Vicia faba - epicotyl - Cotyledons - Hypocotyle - Micropyle

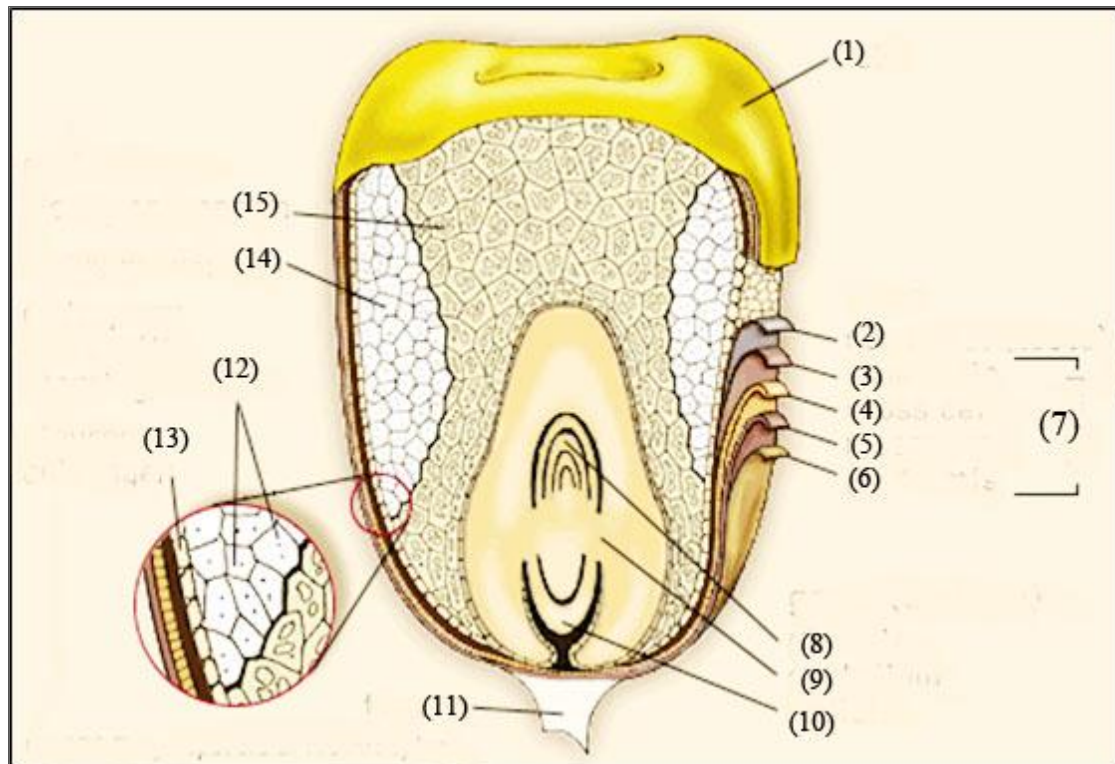


Answer:

1-Seed coat 2 - Hilum 3 - Micropyle 4- Plumule 5- epicotyl 6- Cotyledons 7- Hypocotyle 8-Radicule 9-Embryo 10-Vicia faba.

4- Please put the following words in its place on the following figure?

Starch granules -Radicale - Tip cap -Floury endosperm -Hull -Seed coat -Aleurone -Horney endosperm -Tube cells -Cross cells -Plumule -Scutellum -Mesocarp -Epidermis -Pericarp



Answer:

1-Hull 2-Seed coat 3-Tube cells 4-Cross cells 5-Mesocarp 6-Epidermis
 7-Pericarp 8-Plumule 9-Scutellum 10-Radicale 11- Tip cap 12-Starch
 granules 13-Aleurone 14-Horney endosperm 15-Floury endosperm