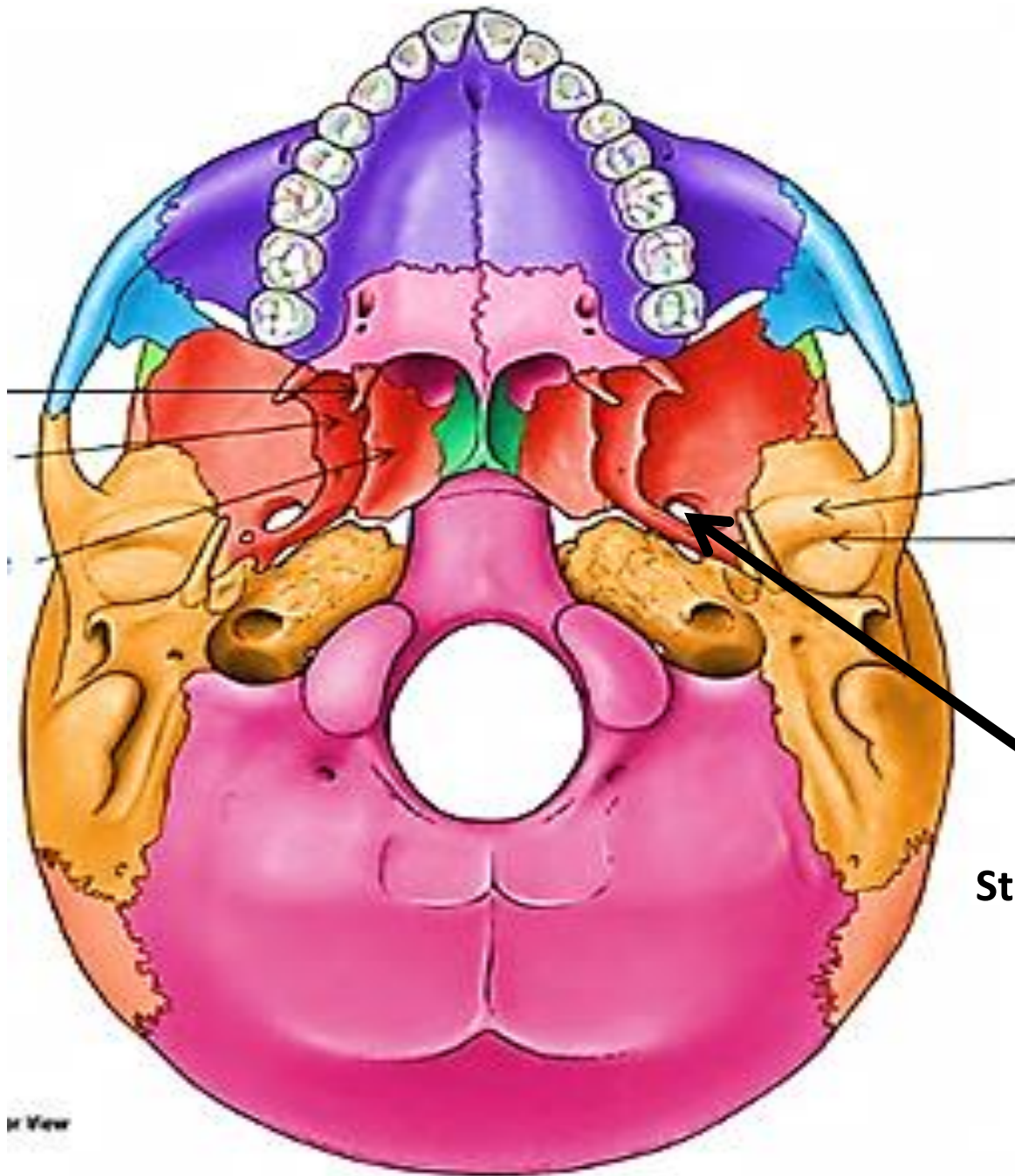
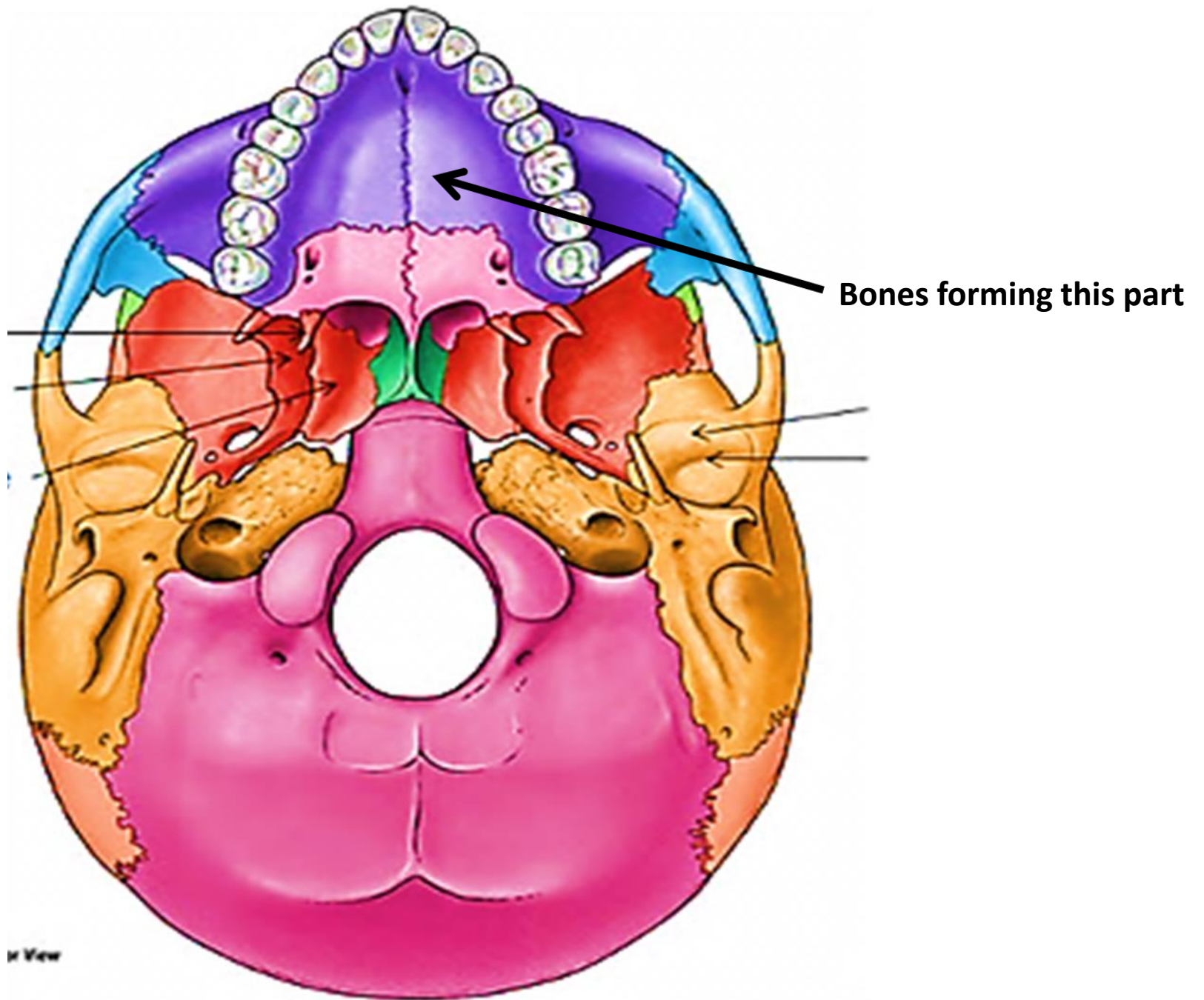
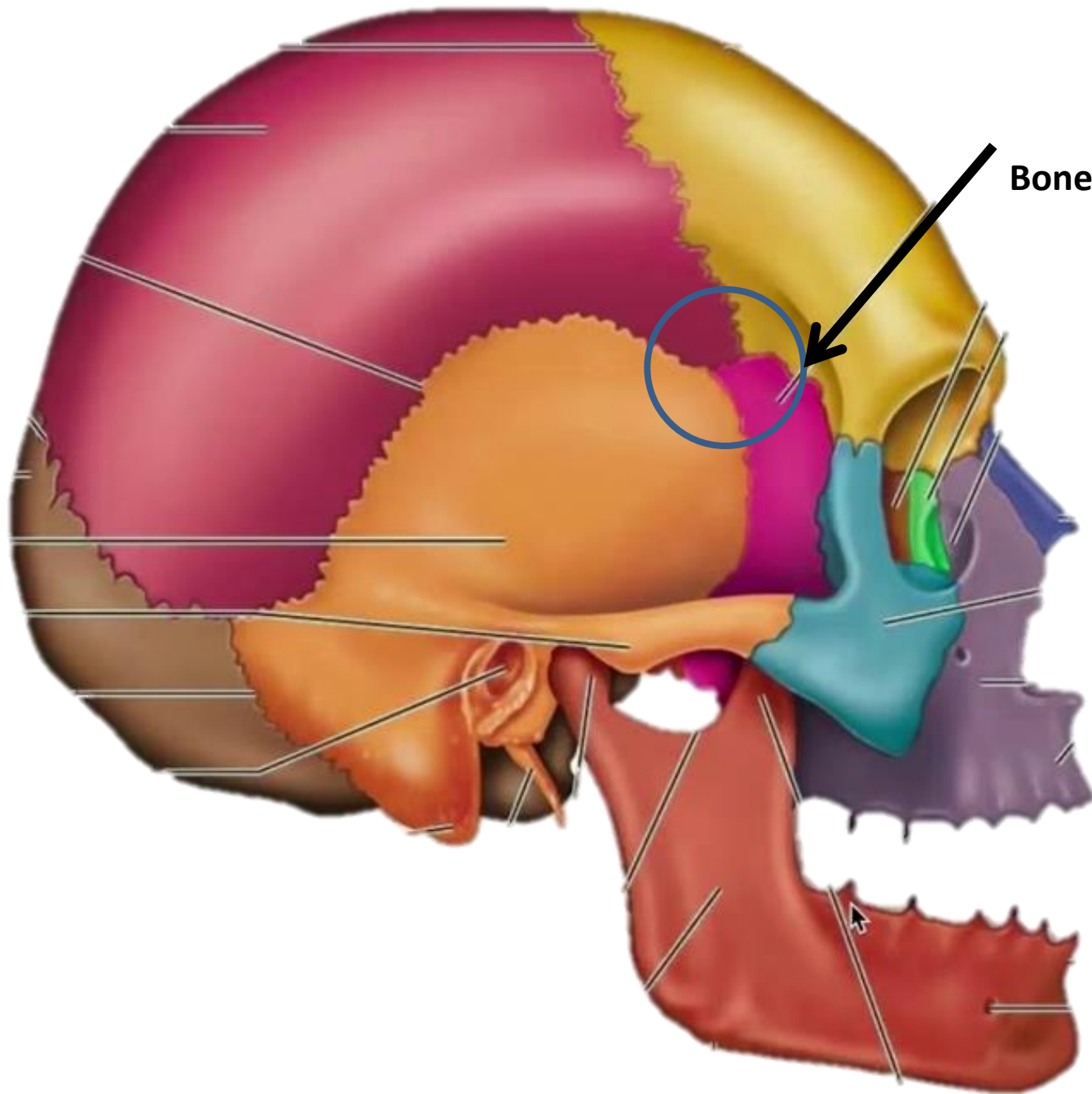


**Structures passing through this foramen**

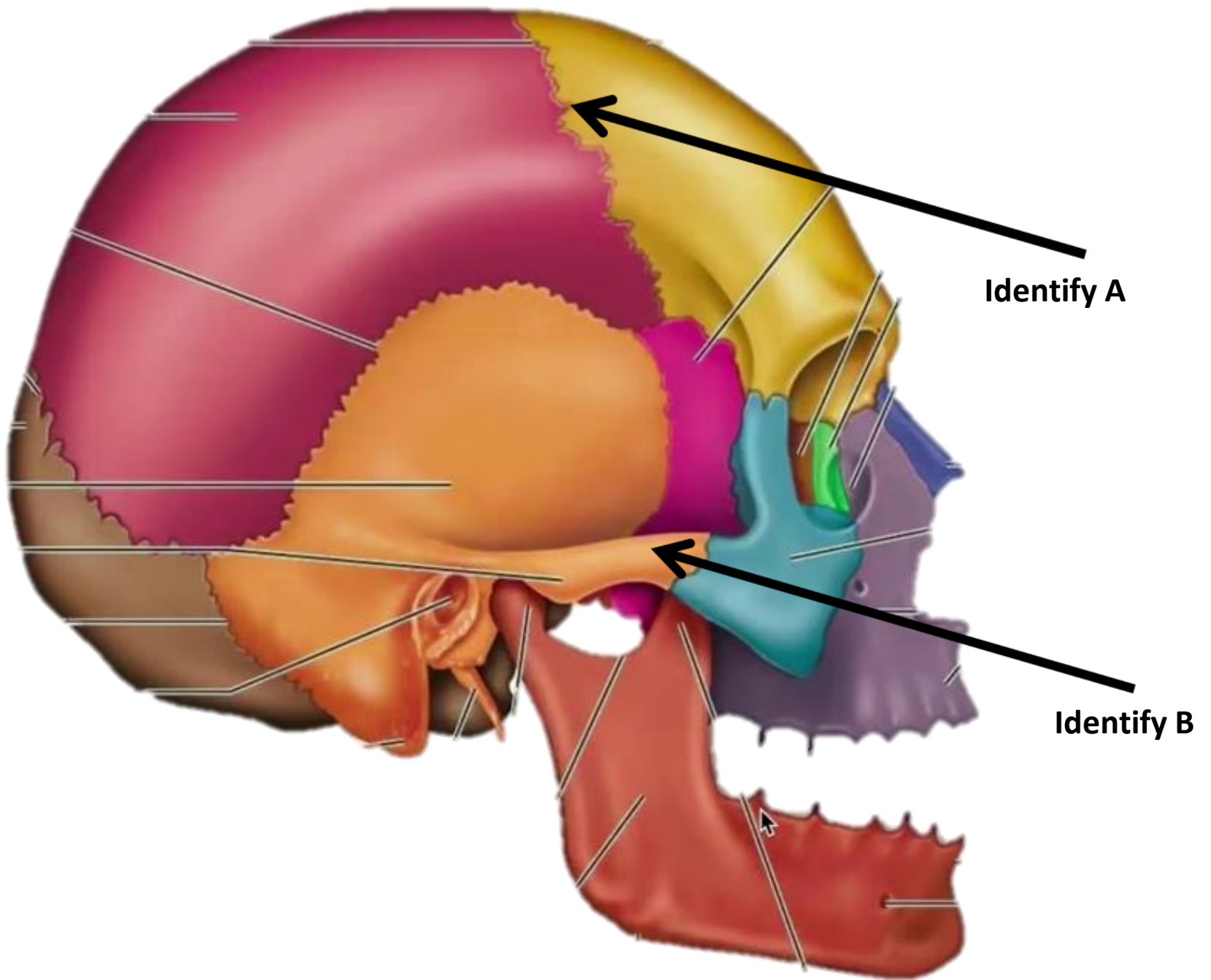


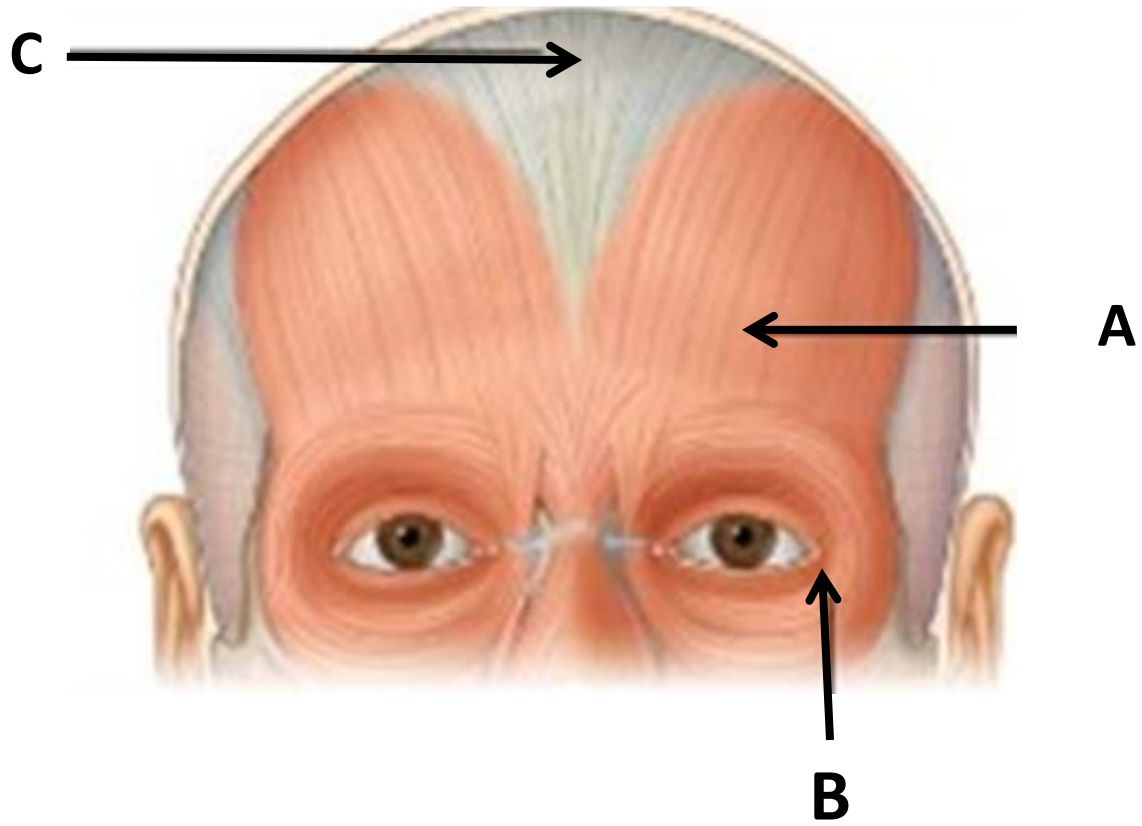
Structures passing through this foramen





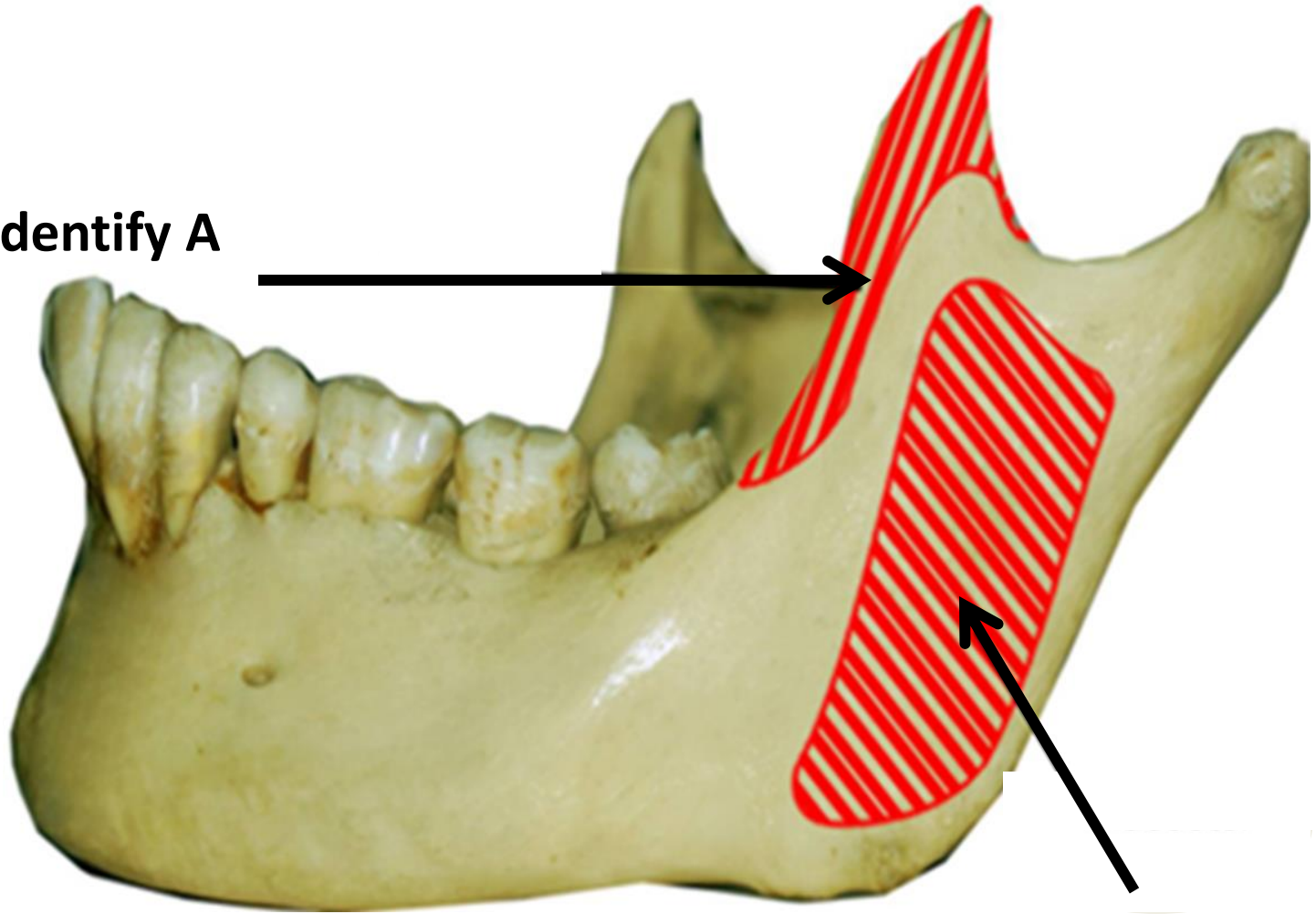
Bones forming this part





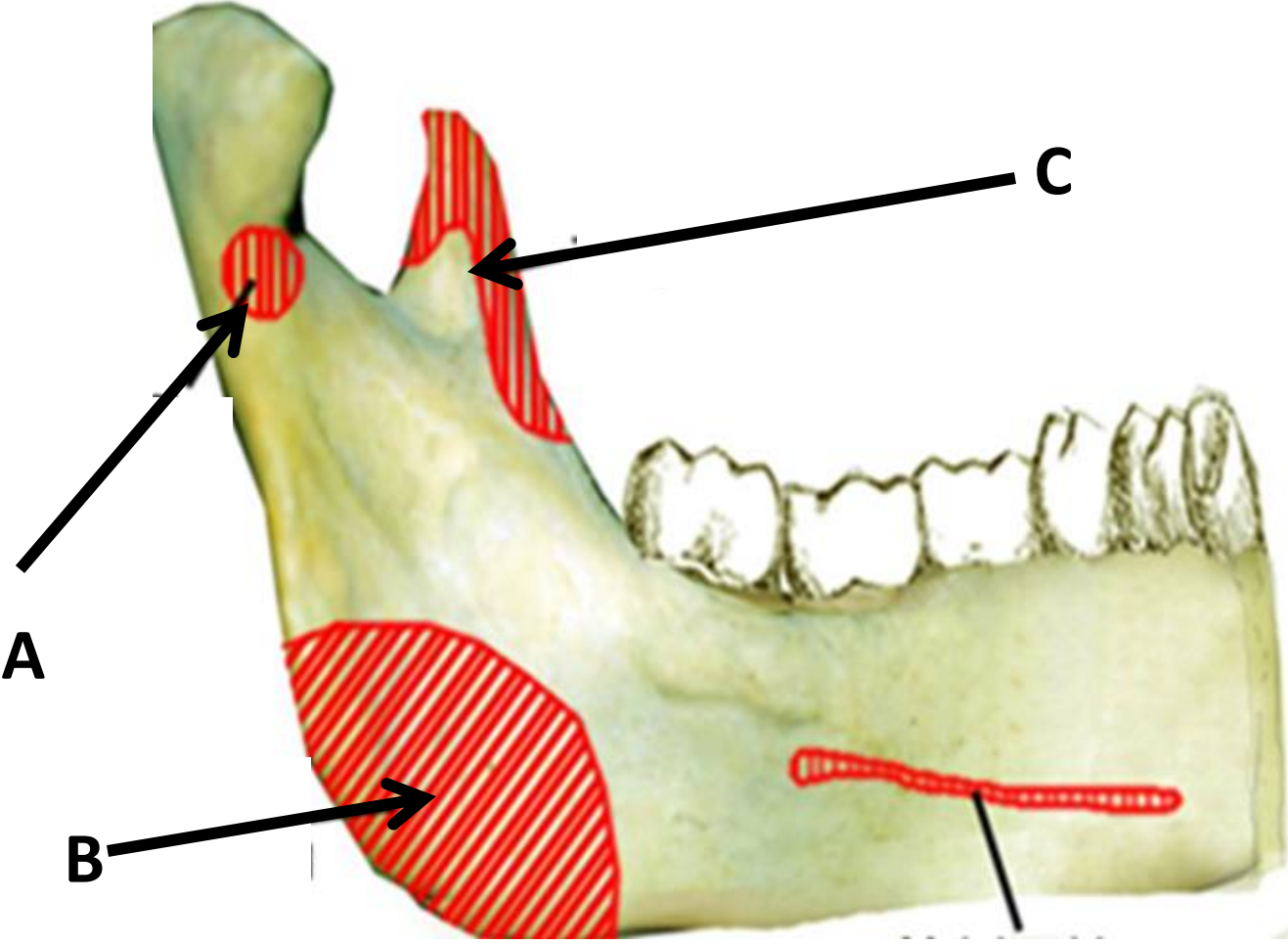
**Muscles attached to mandible**

**Identify A**



**Identify B**

# Muscles attached to mandible





Identify the nerves

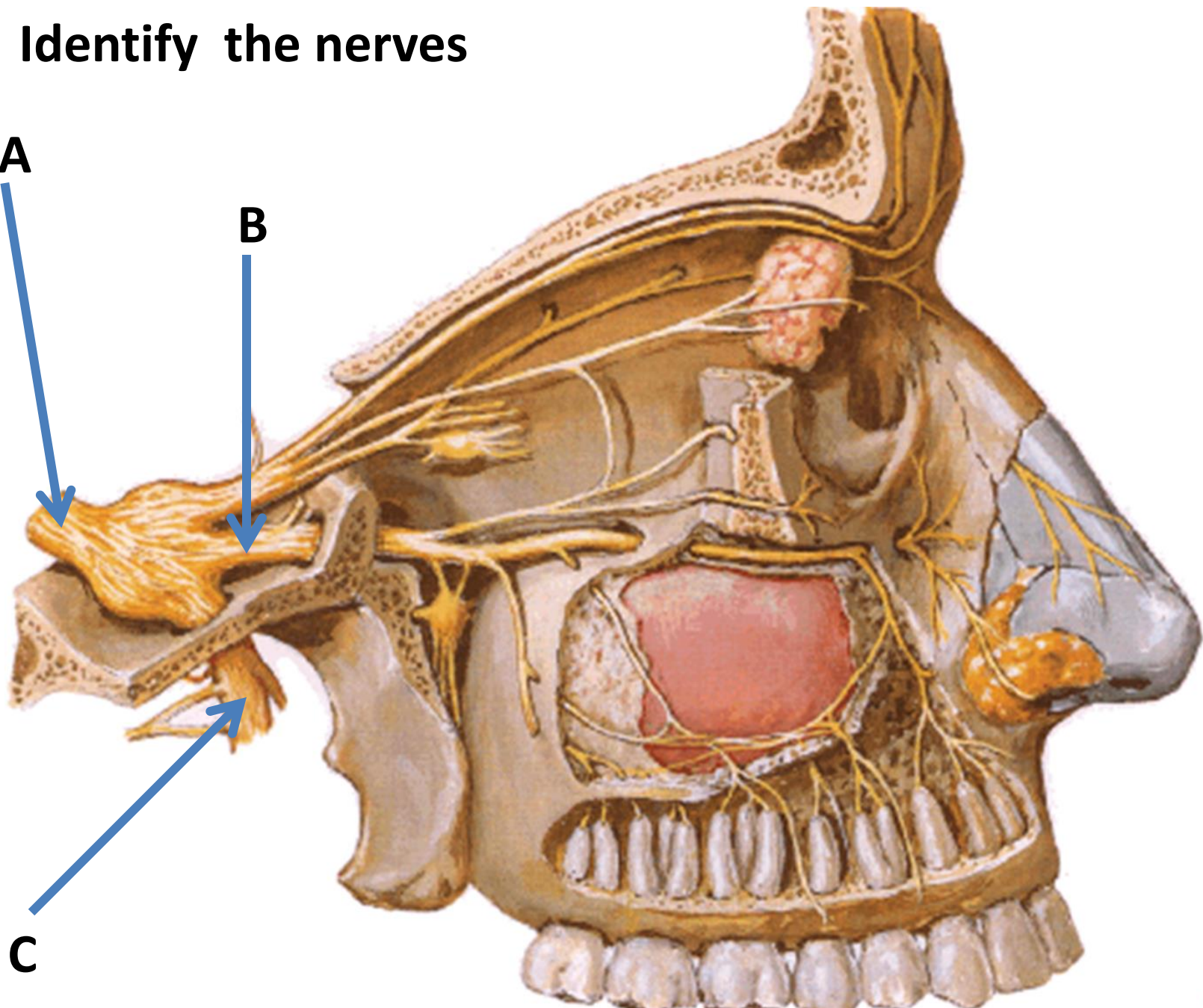
A

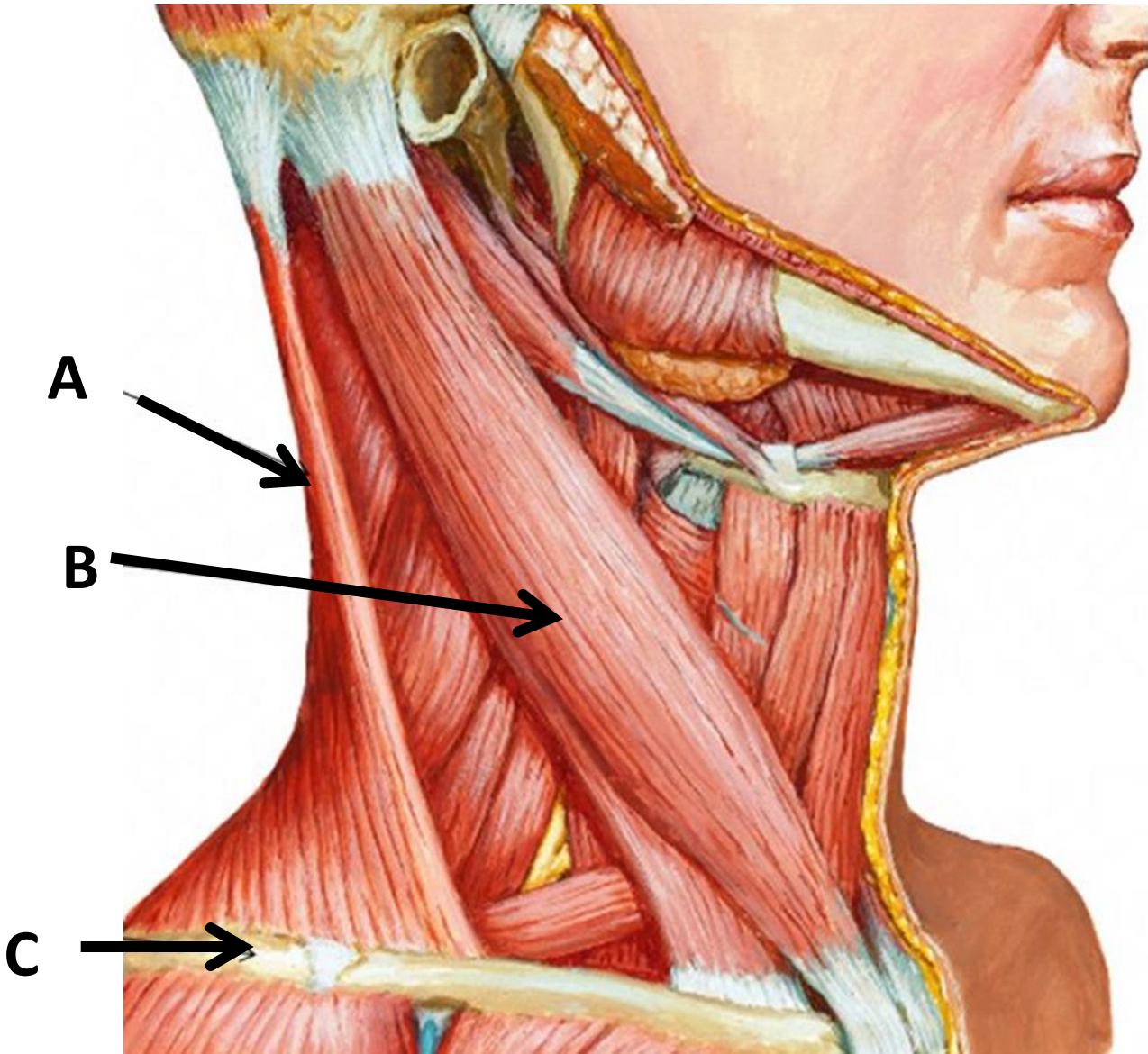


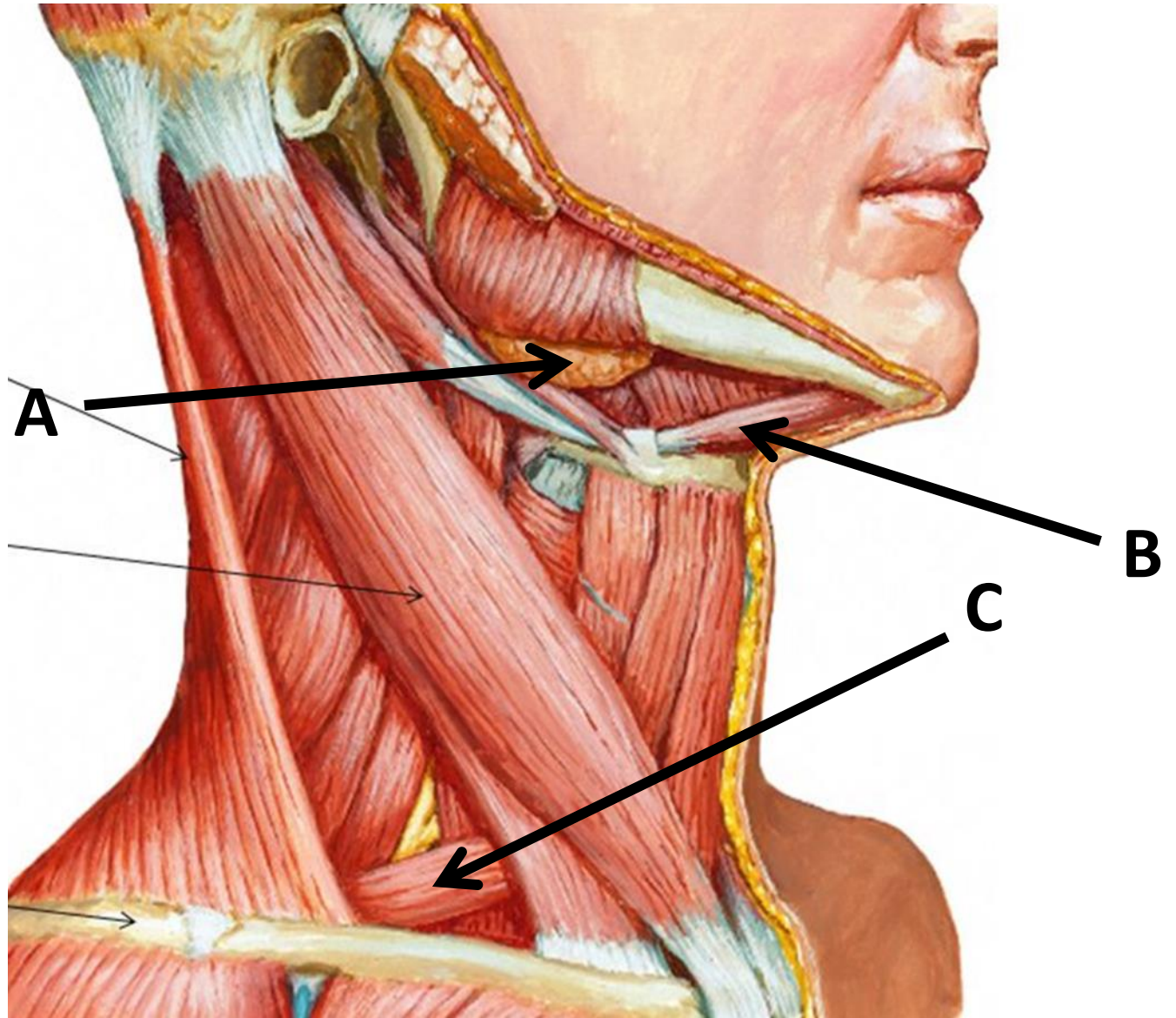
B

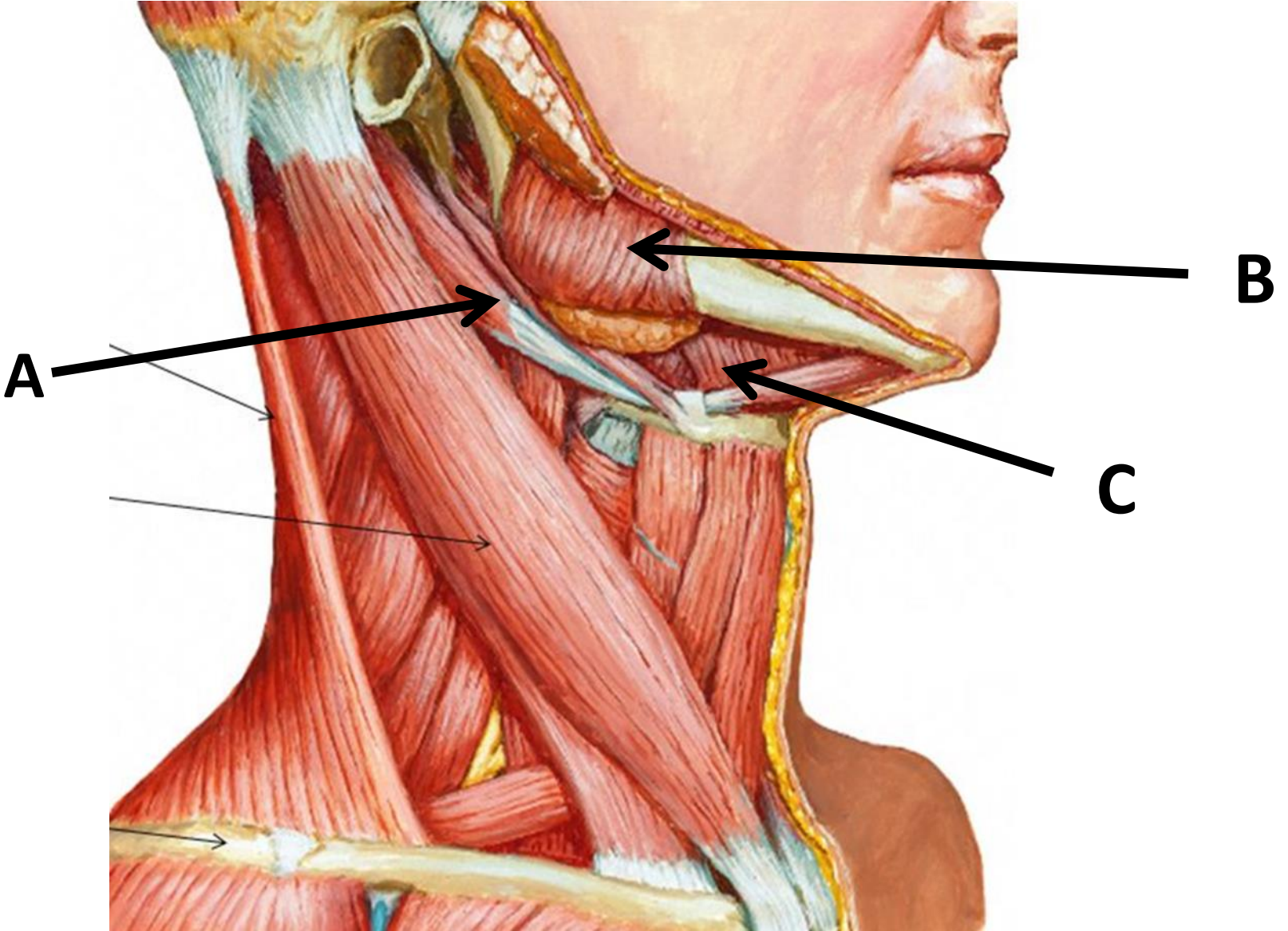


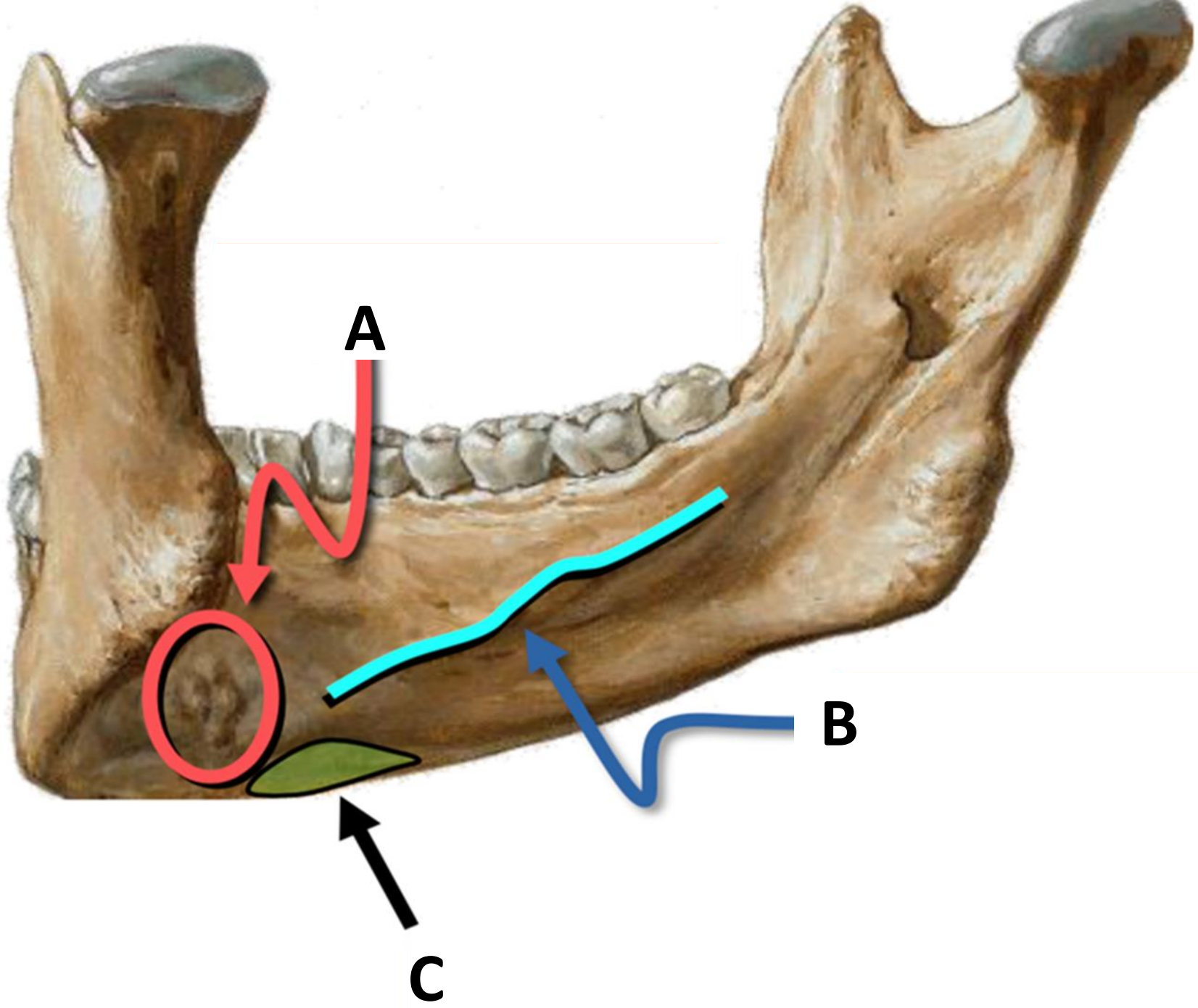
C

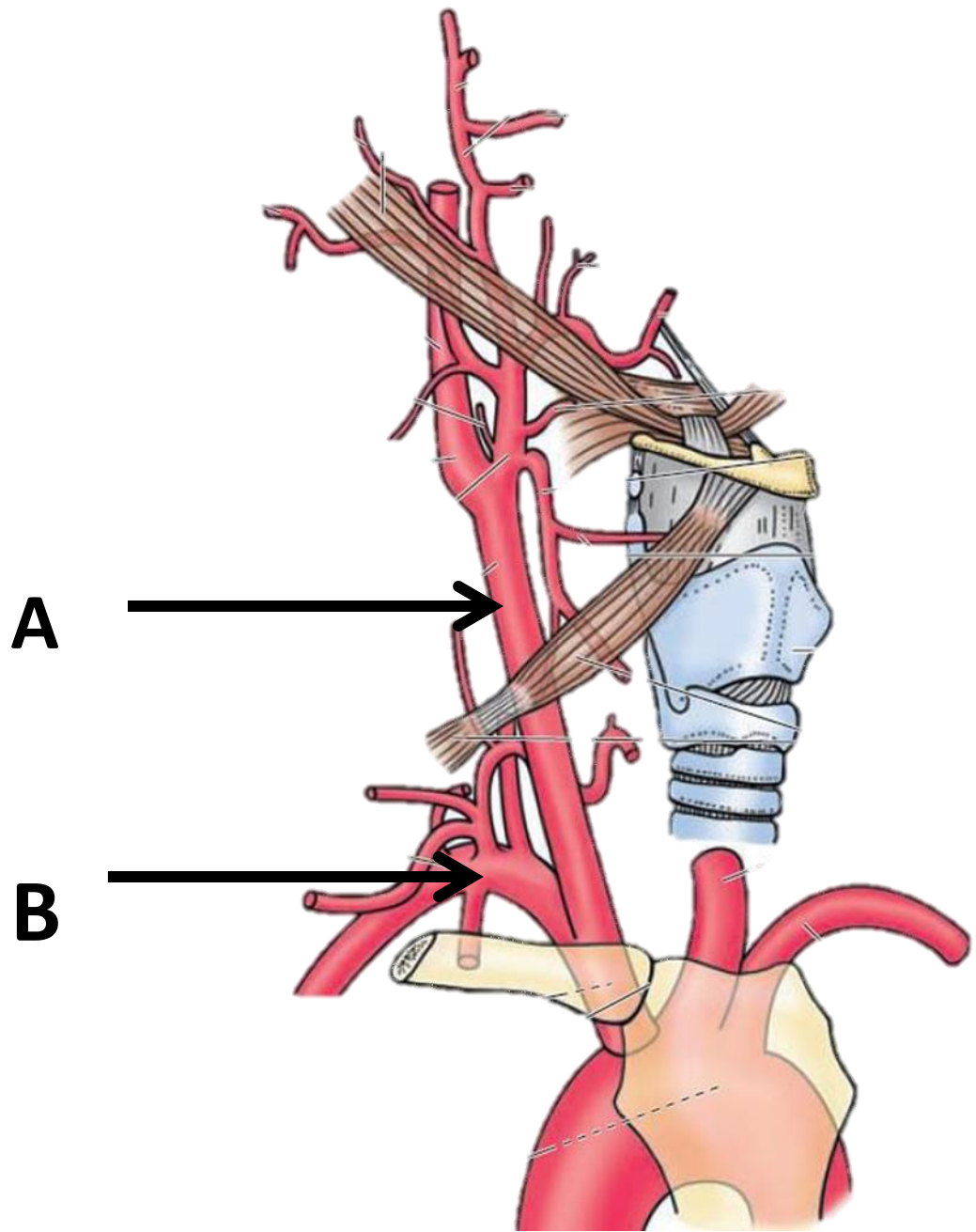


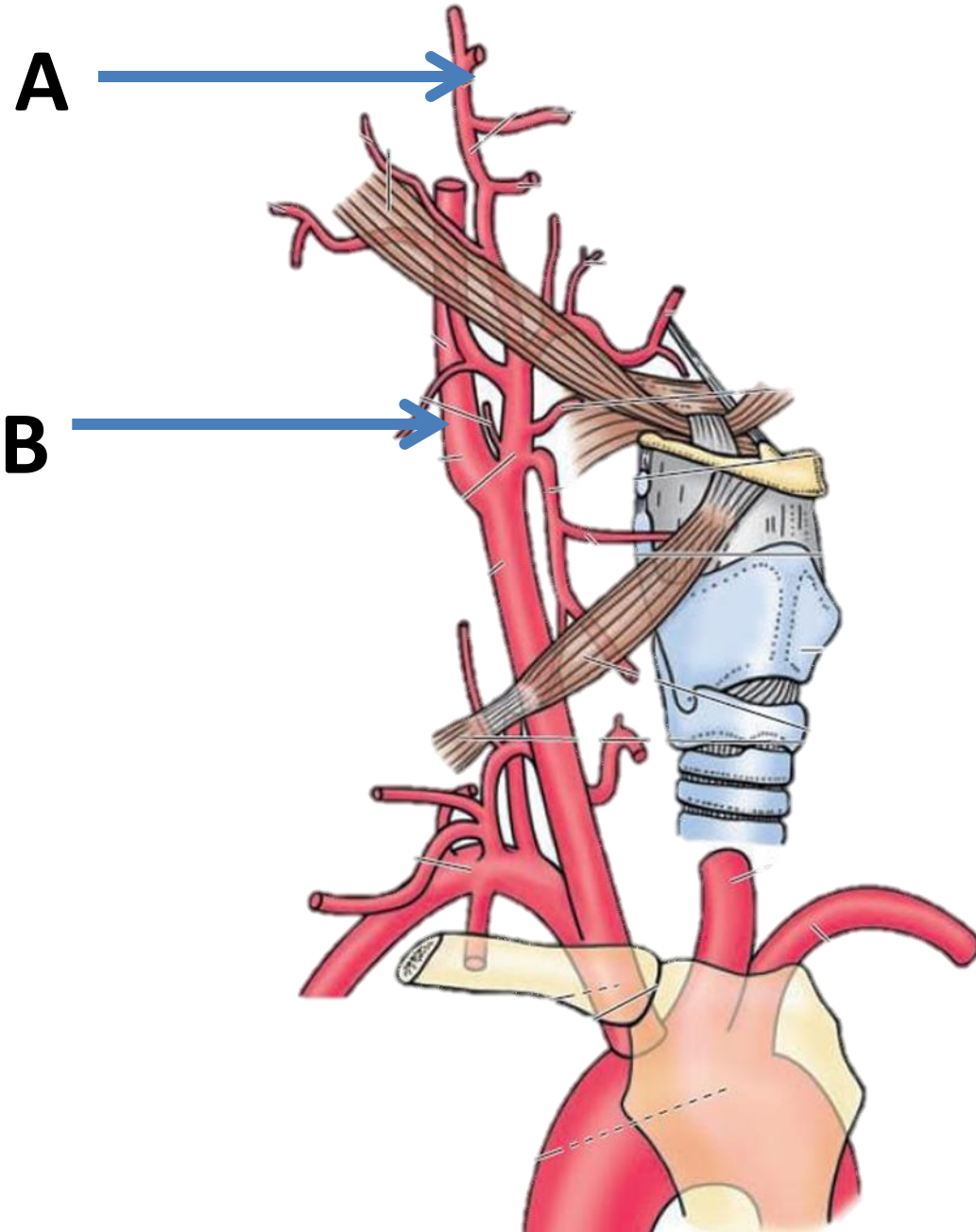


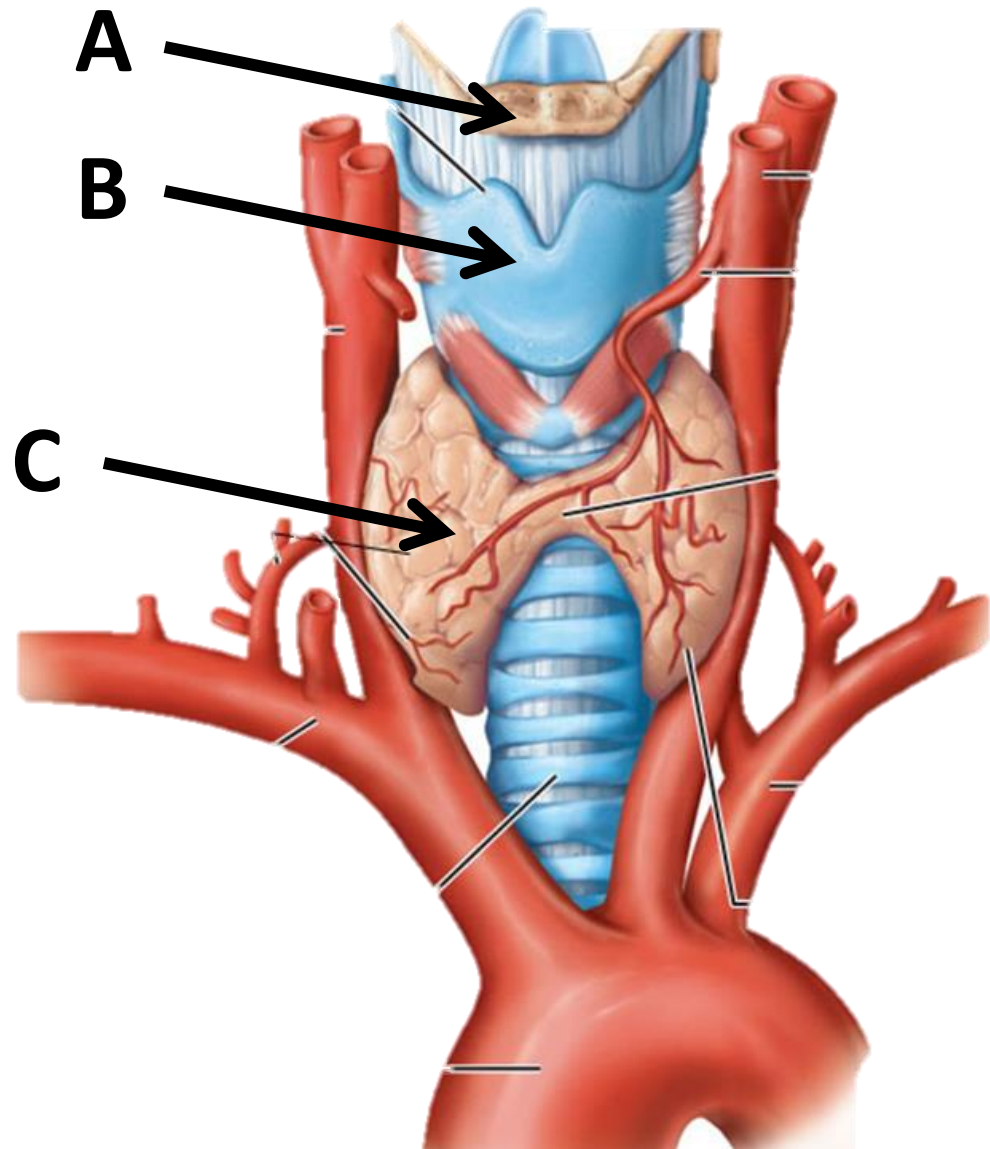




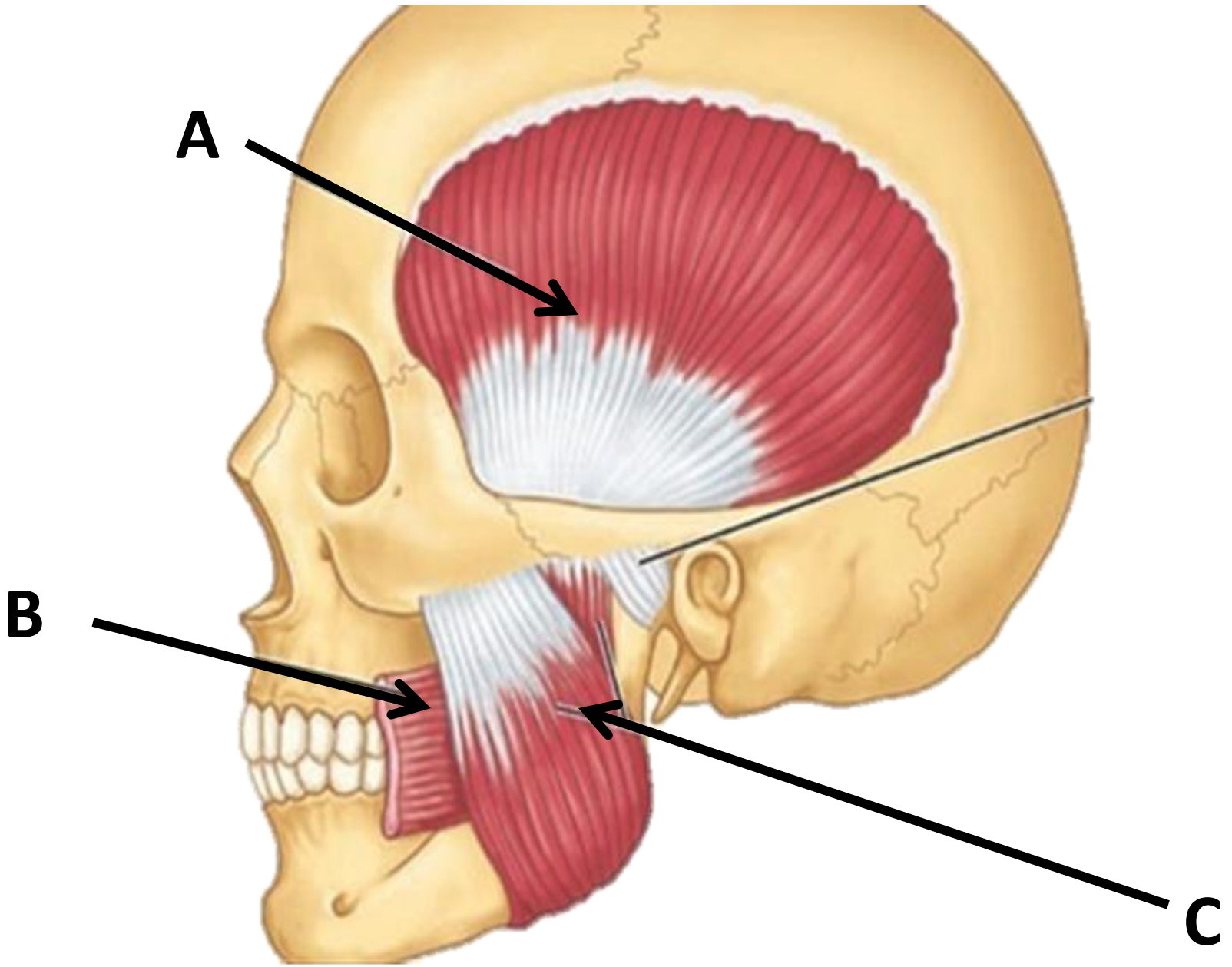


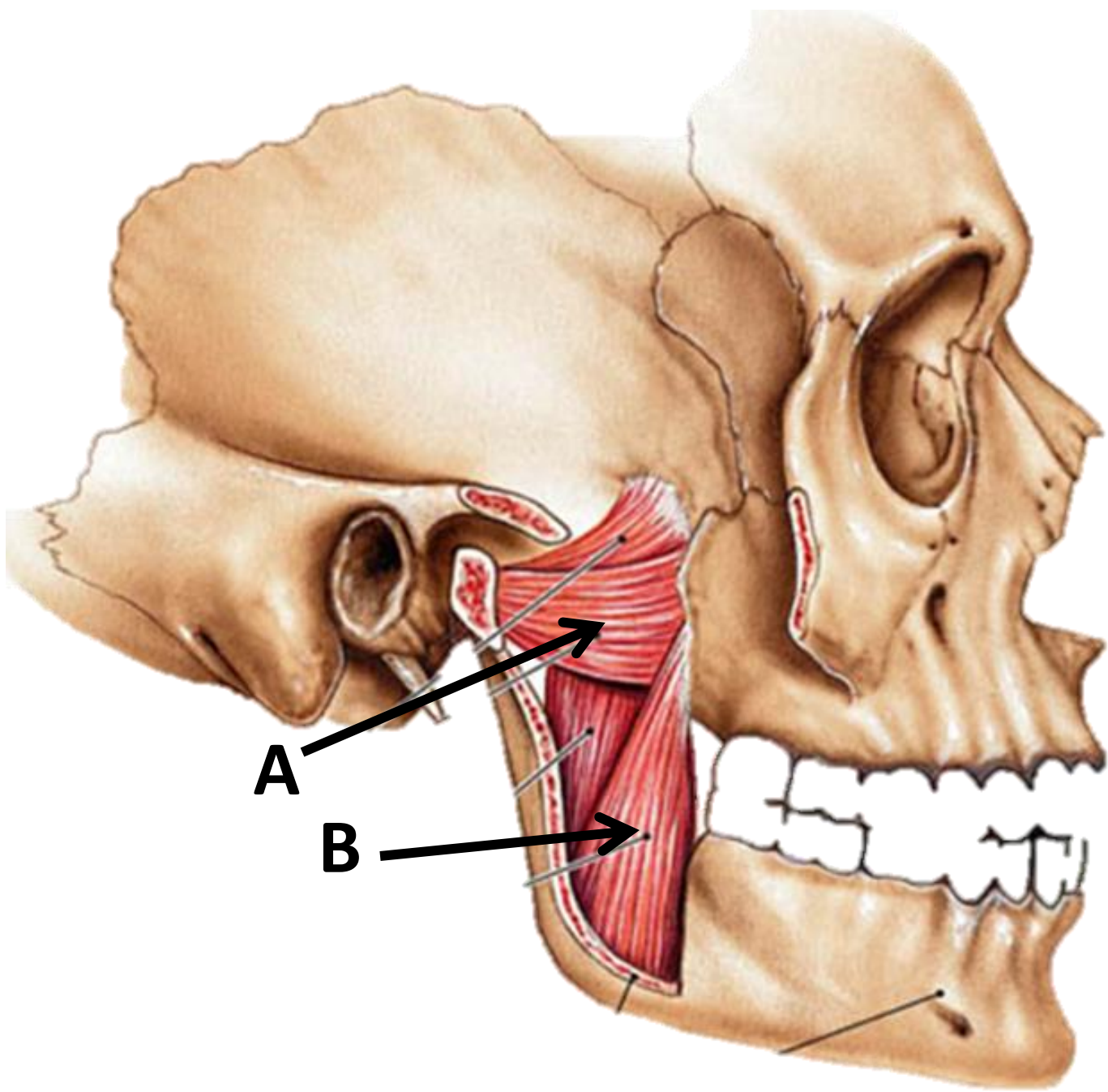


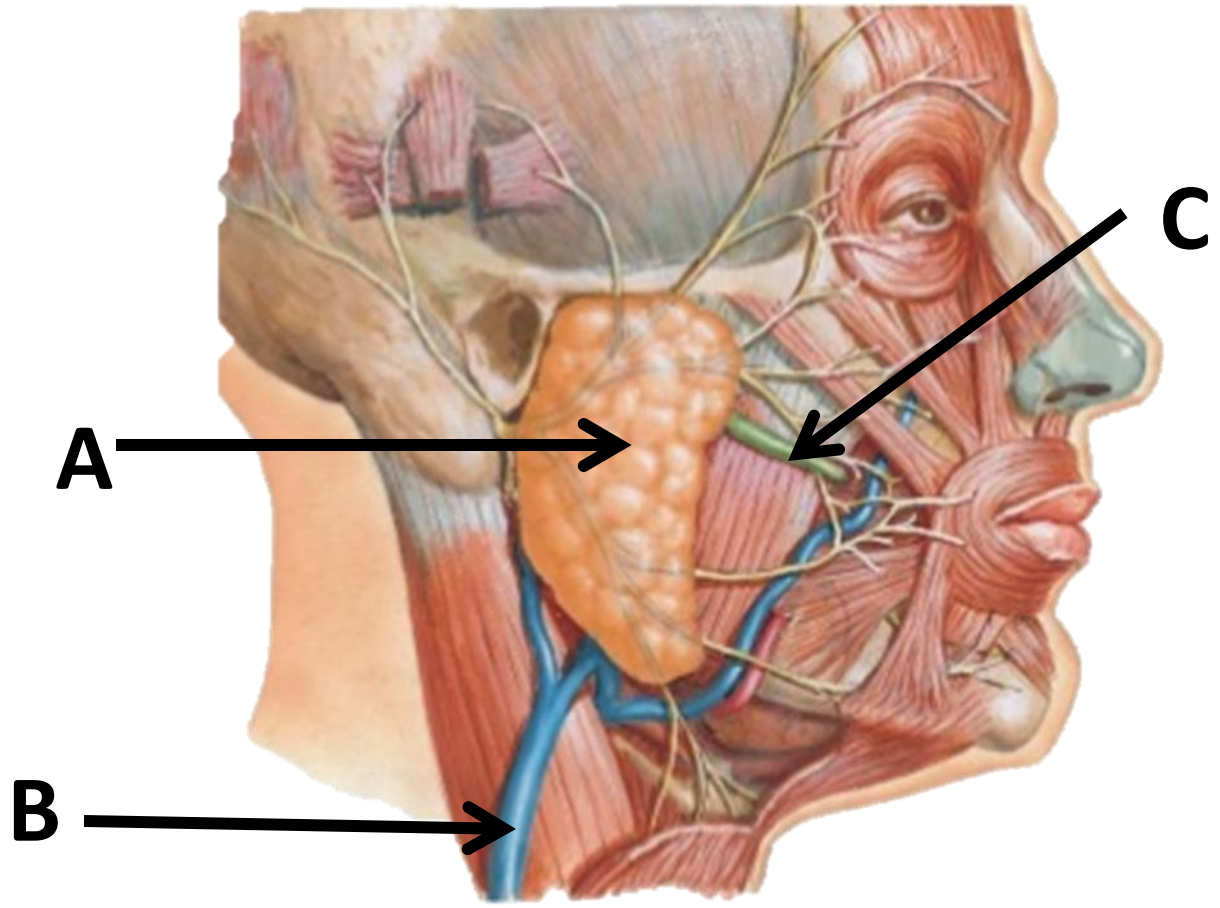


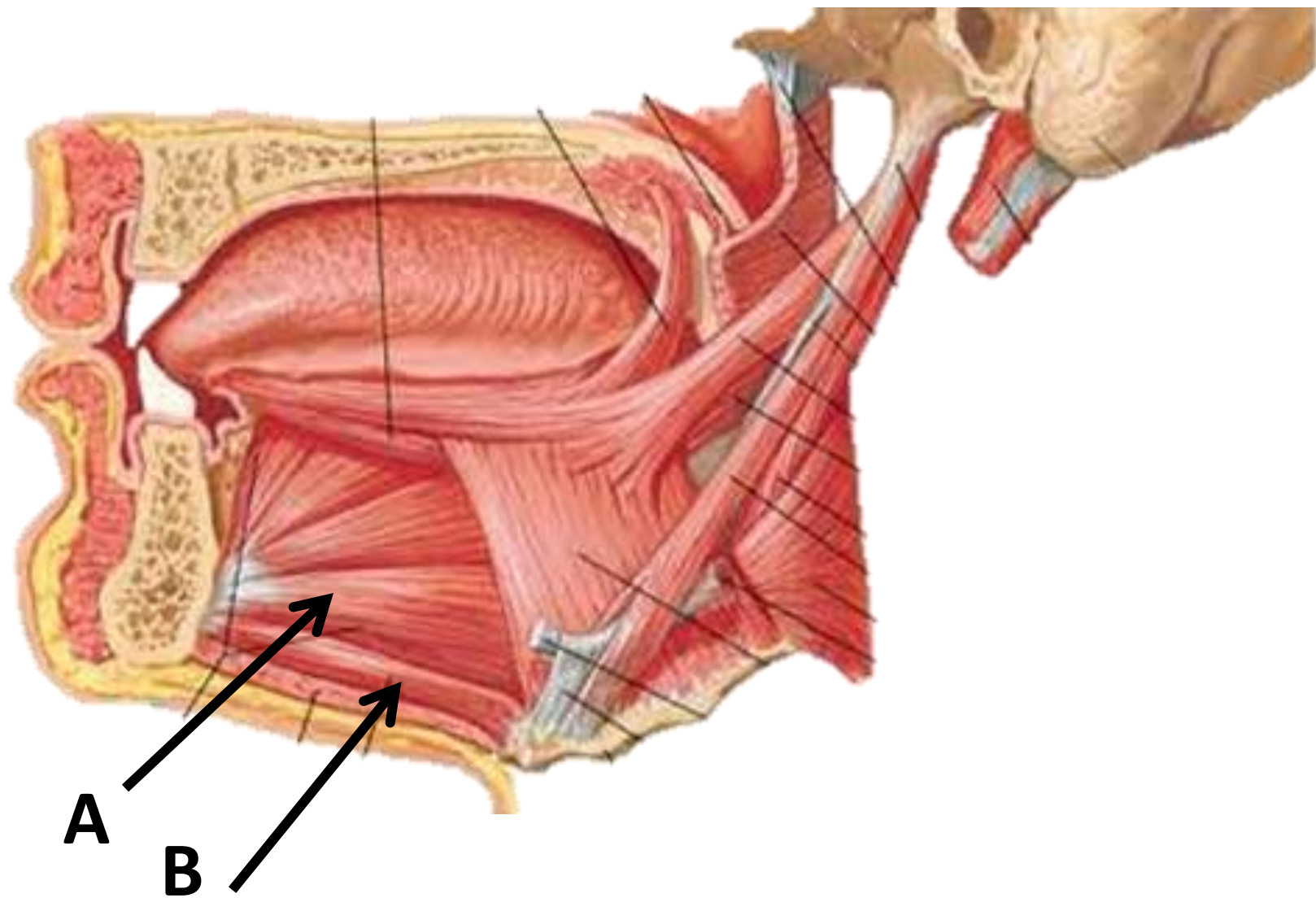


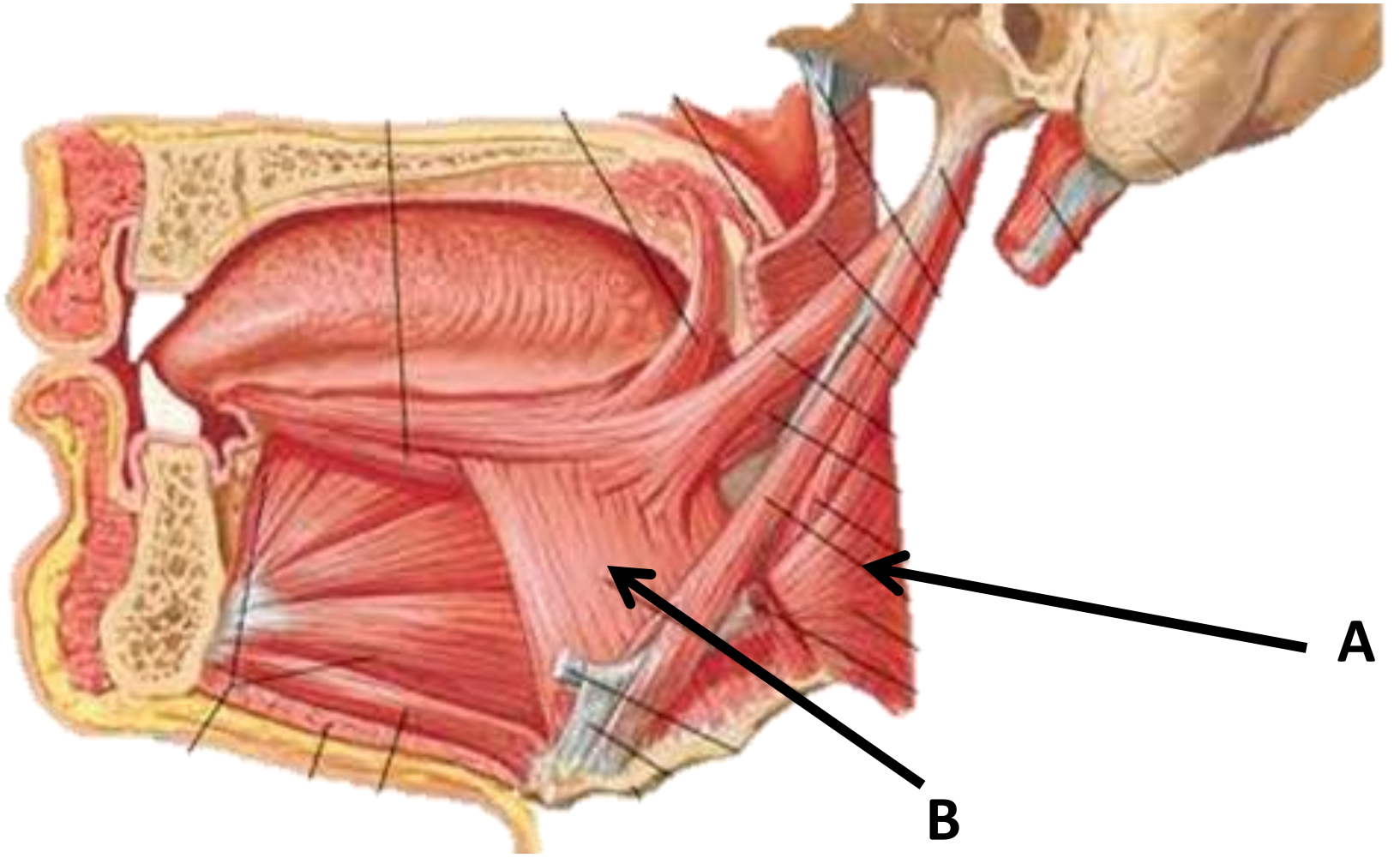


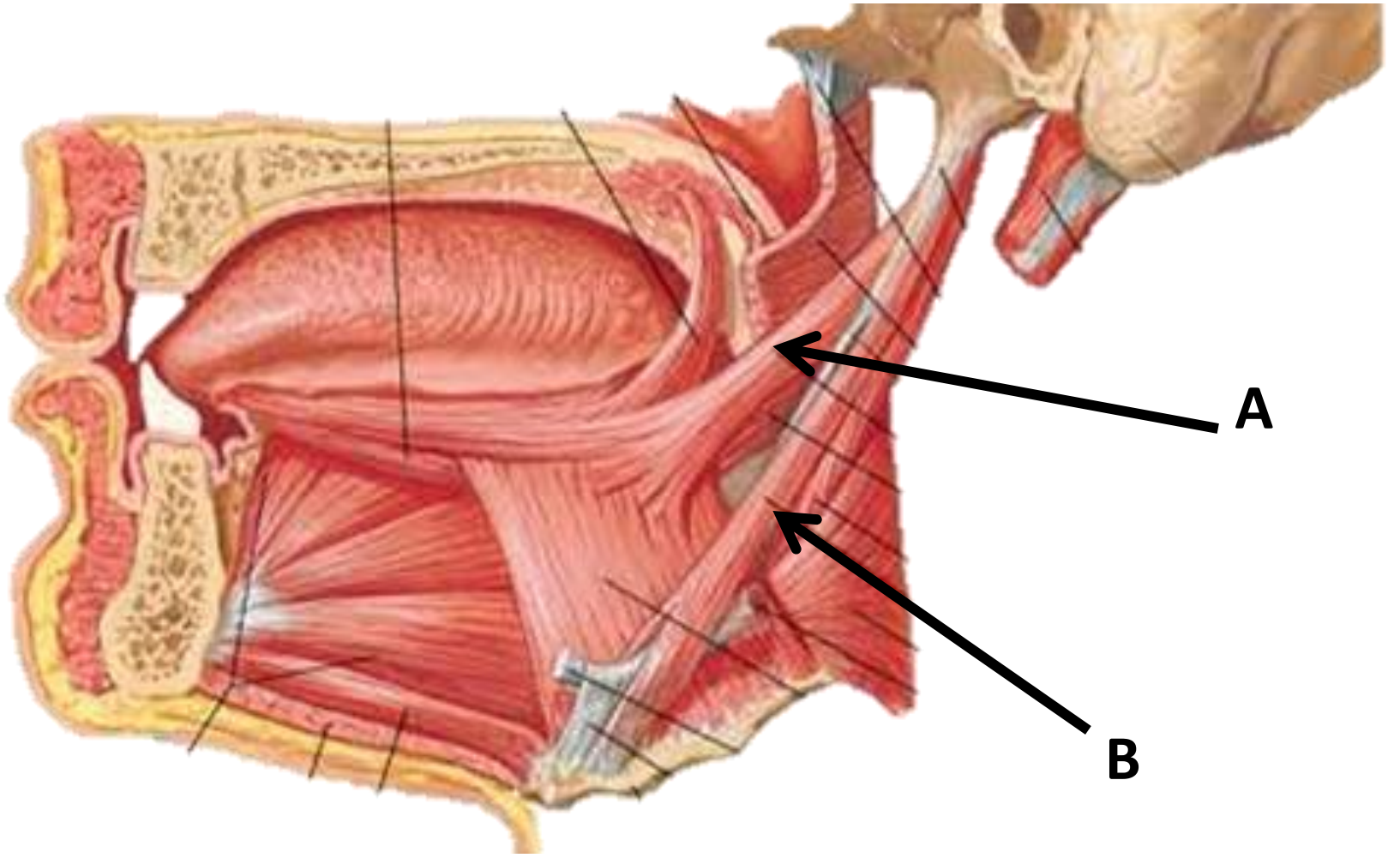






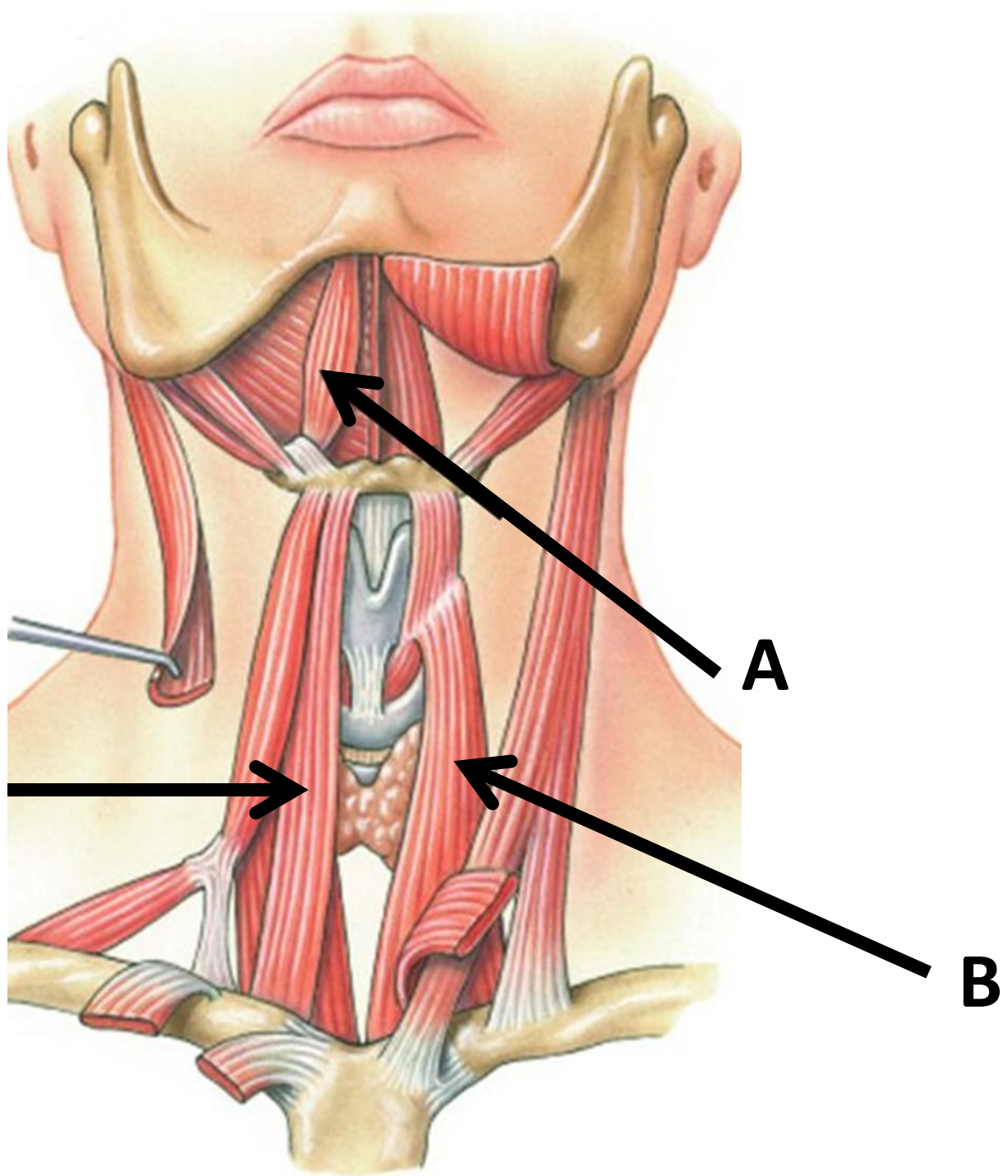






A

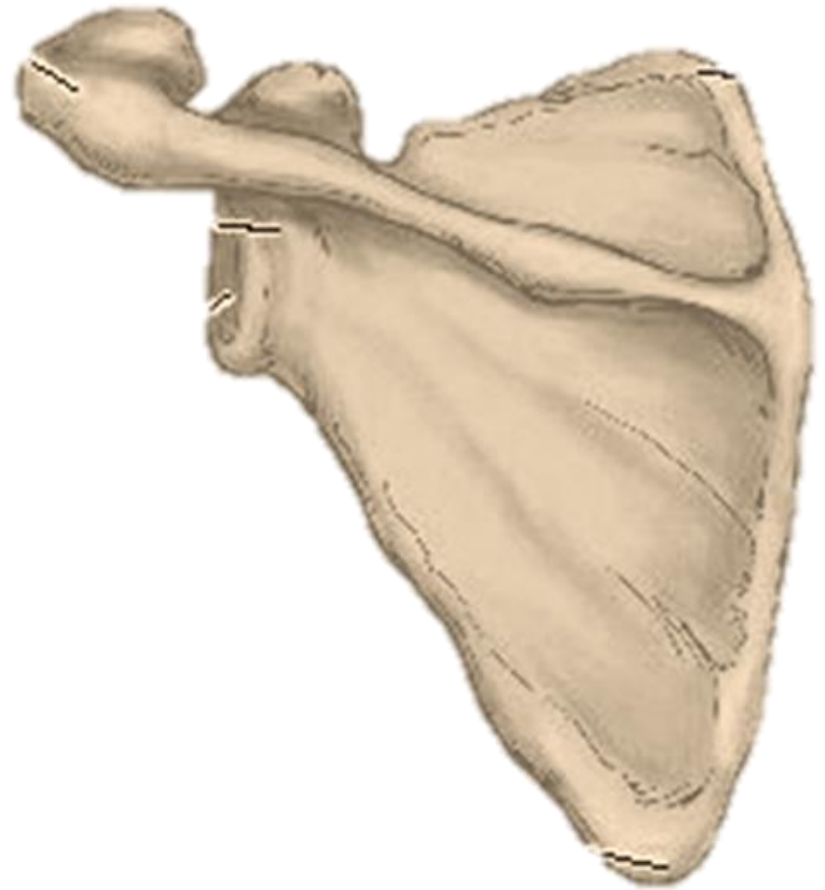
B



Identify the bones



**A**



**B**



Identify the bones



**A**



**B**

Identify the bones



**A**



**B**

# Identify the bones



**A**



**B**

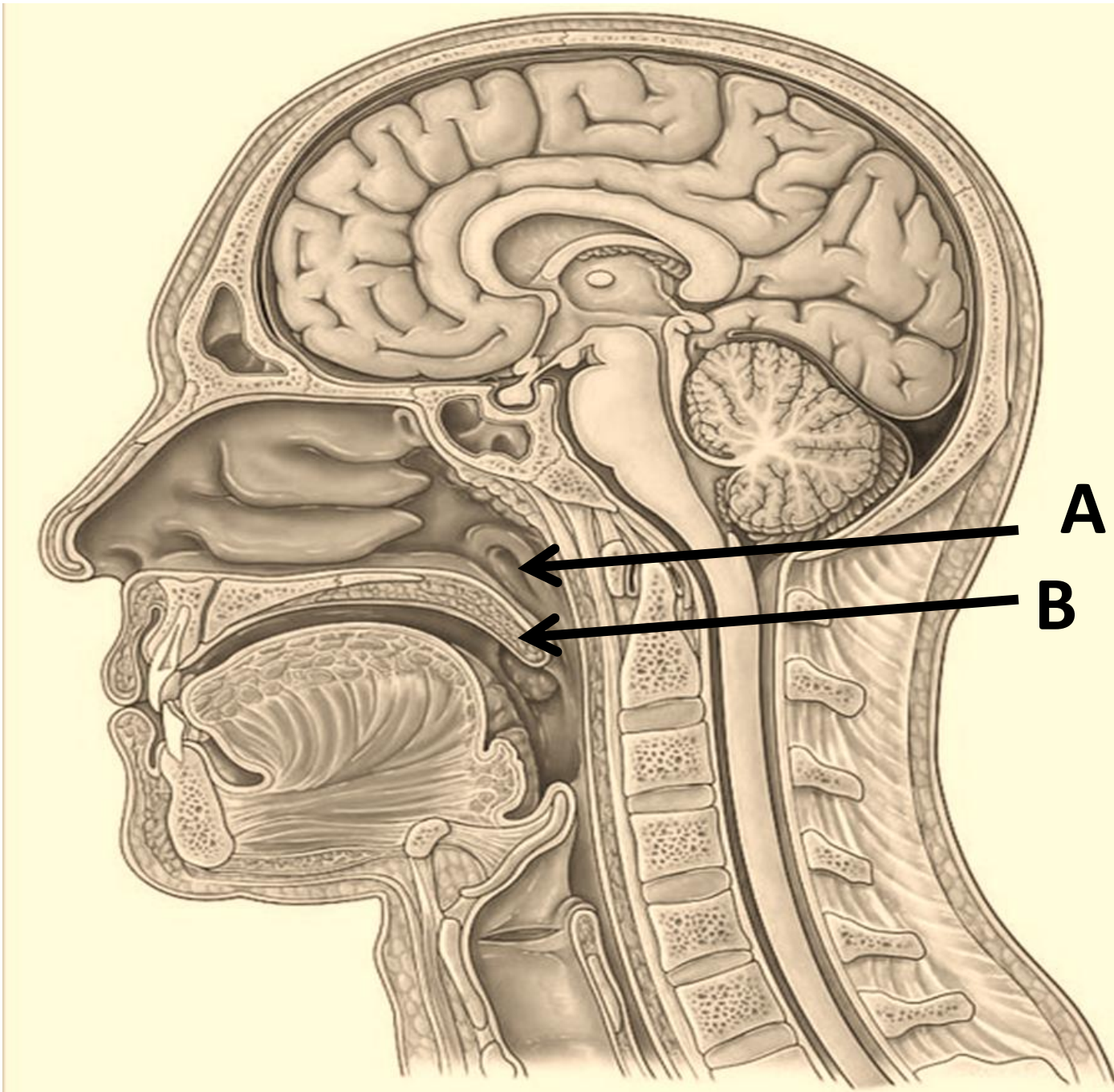
**Identify the bones**

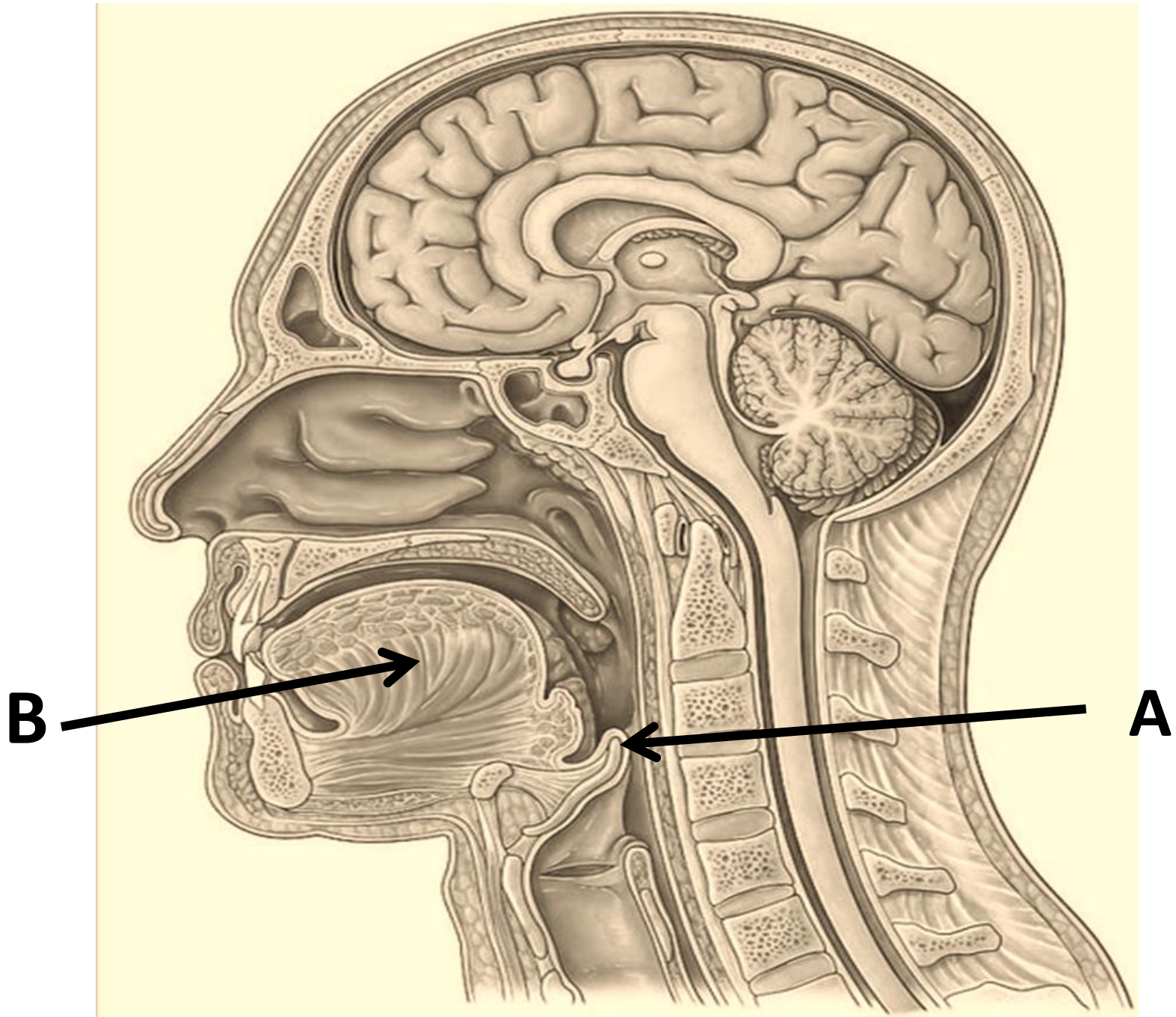


**A**



**B**







# Answer Key

- 11. A:** Submandibular gland      **B:** anterior belly of digastric ms      **C:** inferior belly of omohyoid
- 12. A:** Posterior belly of digastric      **B:** Masseter      **C:** Hyoglossus
- 13. A:** Genial tubercles      **B:** Mylohyoid line      **C:** digastric fossa
- 14. A:** Common carotid artery      **B:** Subclavian artery
- 15. A:** Internal carotid artery      **B:** Superficial temporal artery
- 16. A:** Hyoid bone      **B:** thyroid cartilage      **C:** Thyroid gland
- 17. A:** Temporalis      **B:** Buccinator      **C:** masseter
- 18. A:** Lateral pterygoid      **B:** medial pterygoid
- 19. A:** Parotid gland      **B:** External jugular vein      **C:** Parotid duct
- 20. A:** Genioglossus      **B:** Mylohyoid ms



# Answer Key

**21. A:** Middle constrictor ms

**B:** Hyoglossus ms

**22. A:** Styloglossus ms

**B:** Stylohyoid ms

**23. A:** anterior bellii of digastric

**B:** sternohyoid

**C:** Sternothyroid

**24. A:** Hip bone

**B:** Scapula

**25 . A:** Humerus

**B:** Ulna

**26. A:** Femur

**B:** clavicle

**27. A:** Sternum

**B:** Tibia

**28. A:** Axis vertebra

**B:** Rib

**29. A:** Opening of auditory tube

**B:** soft palate

**30. A:** epiglottis

**B:** genioglossus muscle