



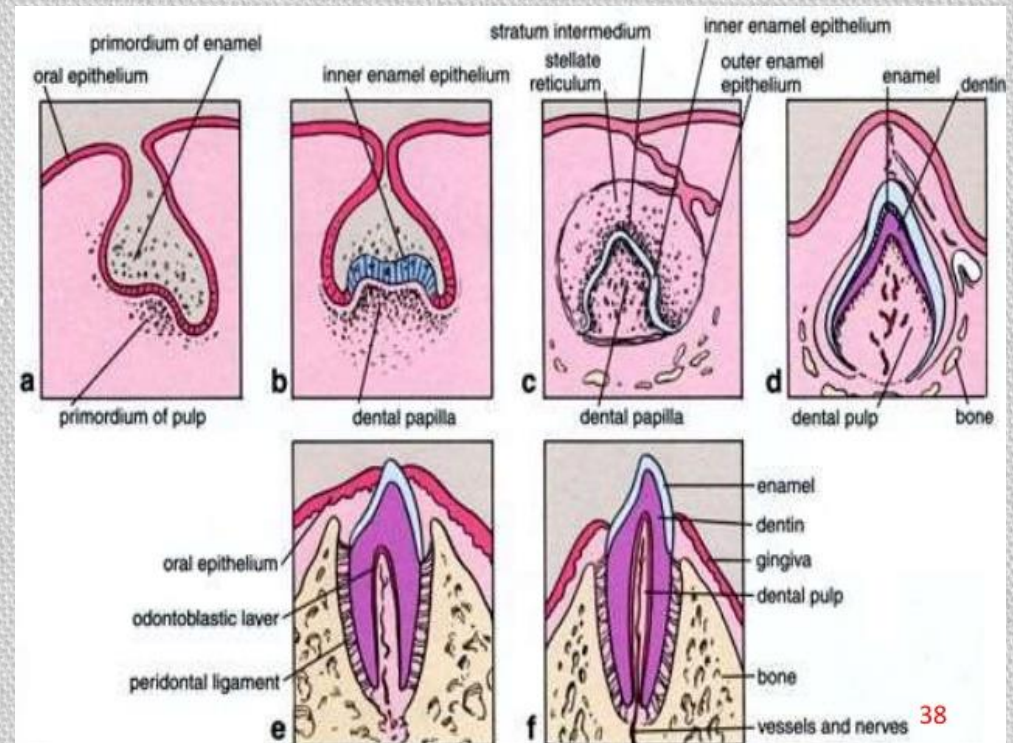
ORAL BIOLOGY DEPARTMENT

**Practical Oral Histology
Revision**

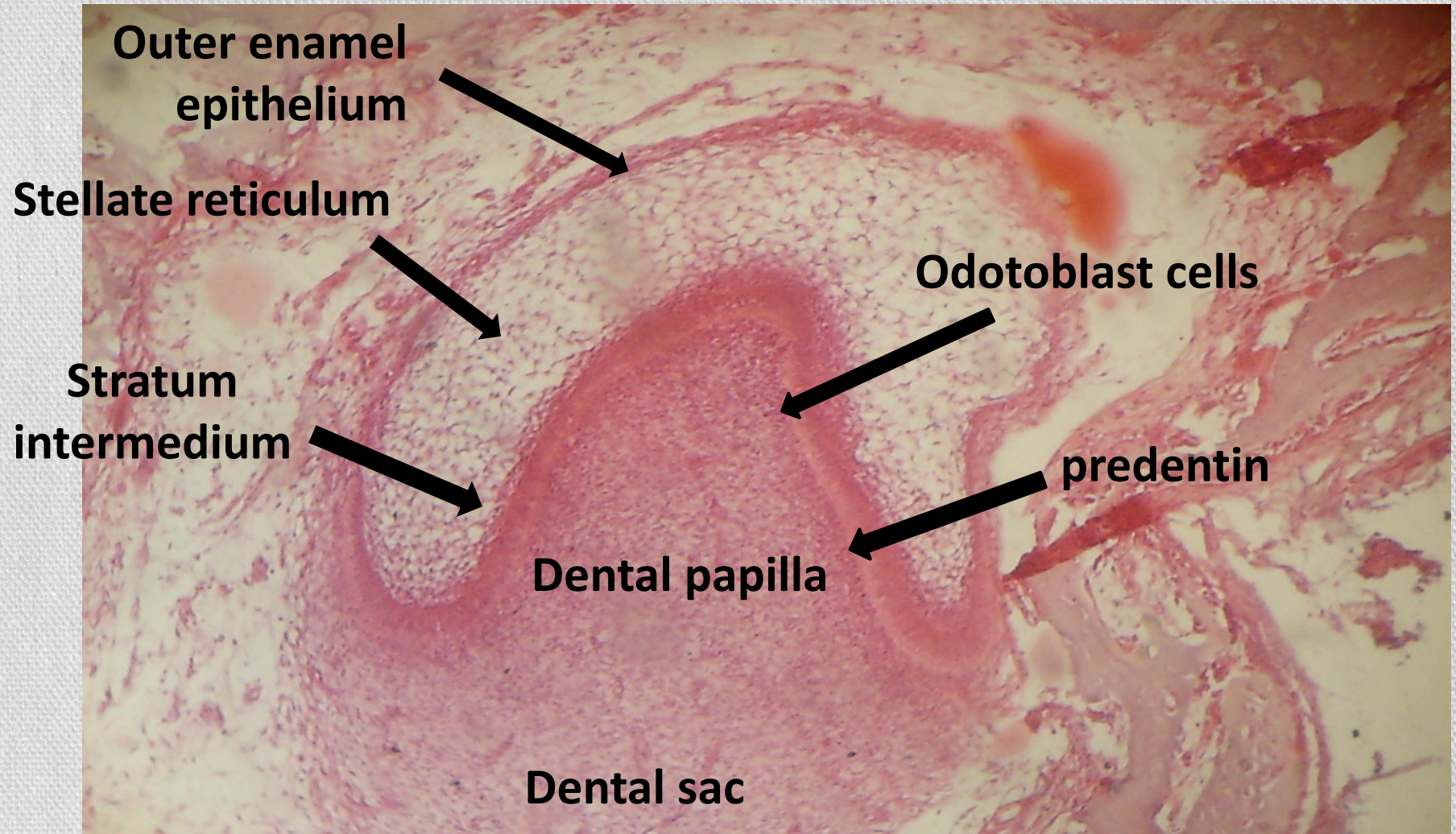


TOOTH DEVELOPMENT

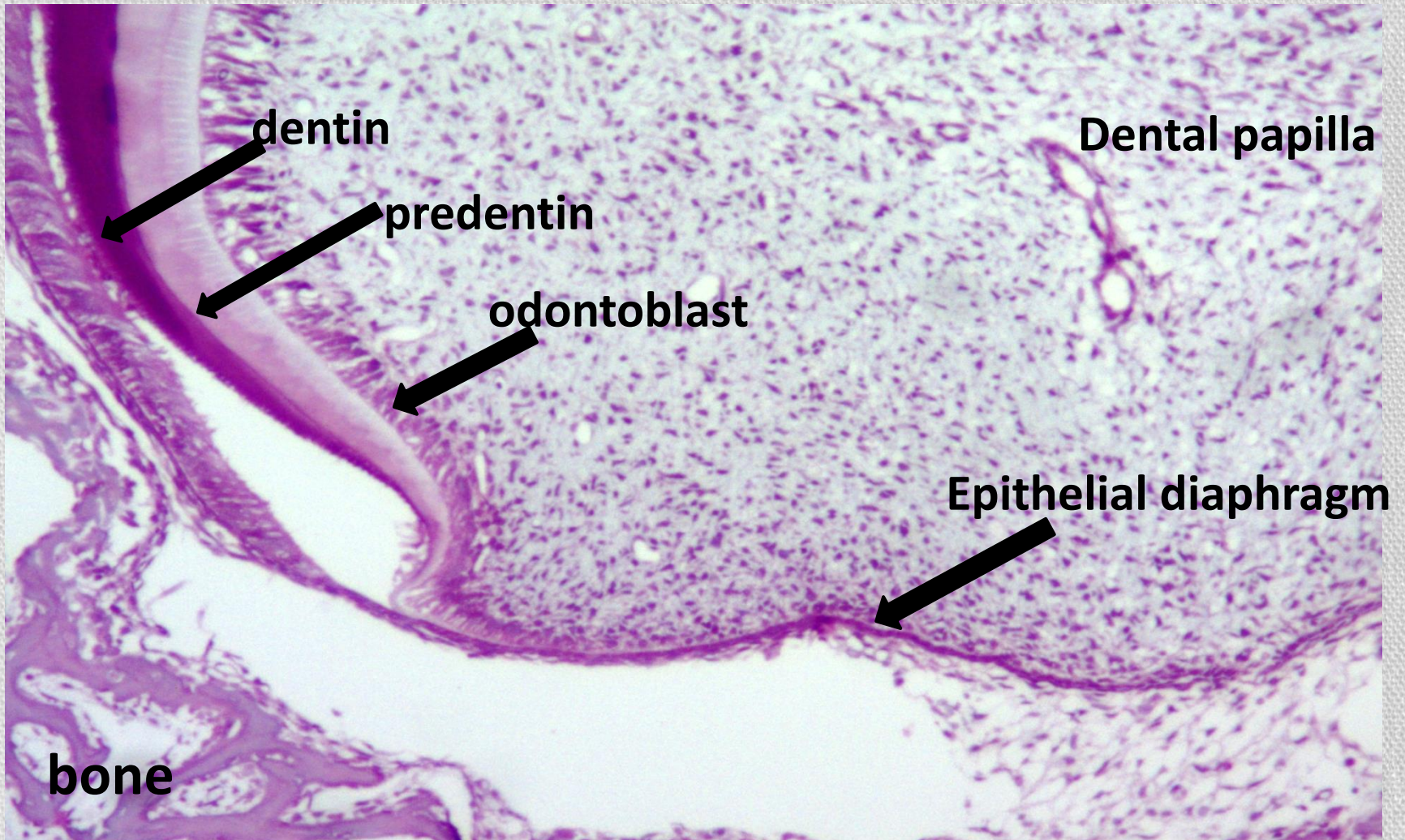
Decalcified section



Decalcified section (H&E) showing late bell stage



Decalcified section(H&E)showing root formation

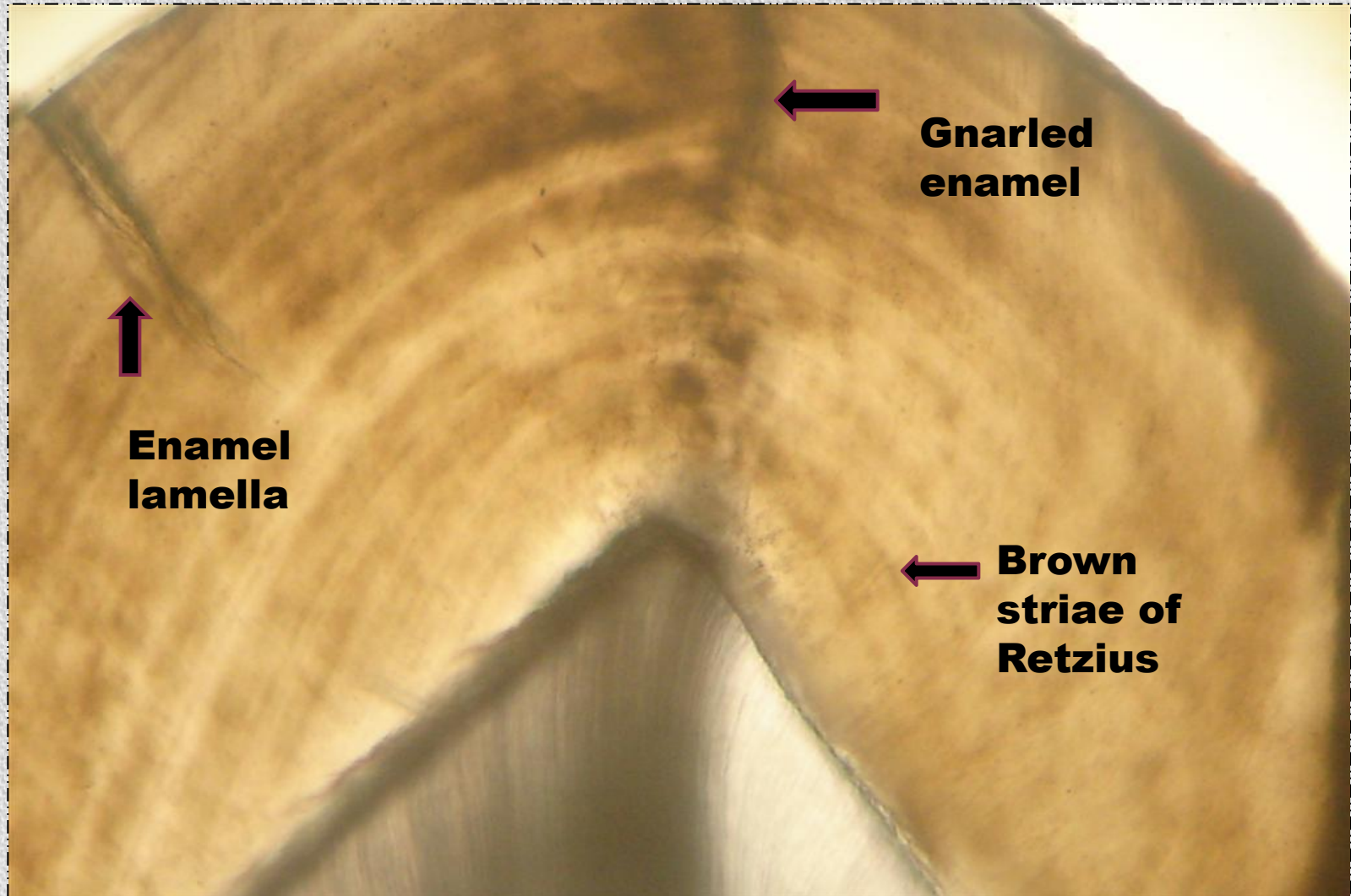


ENAMEL

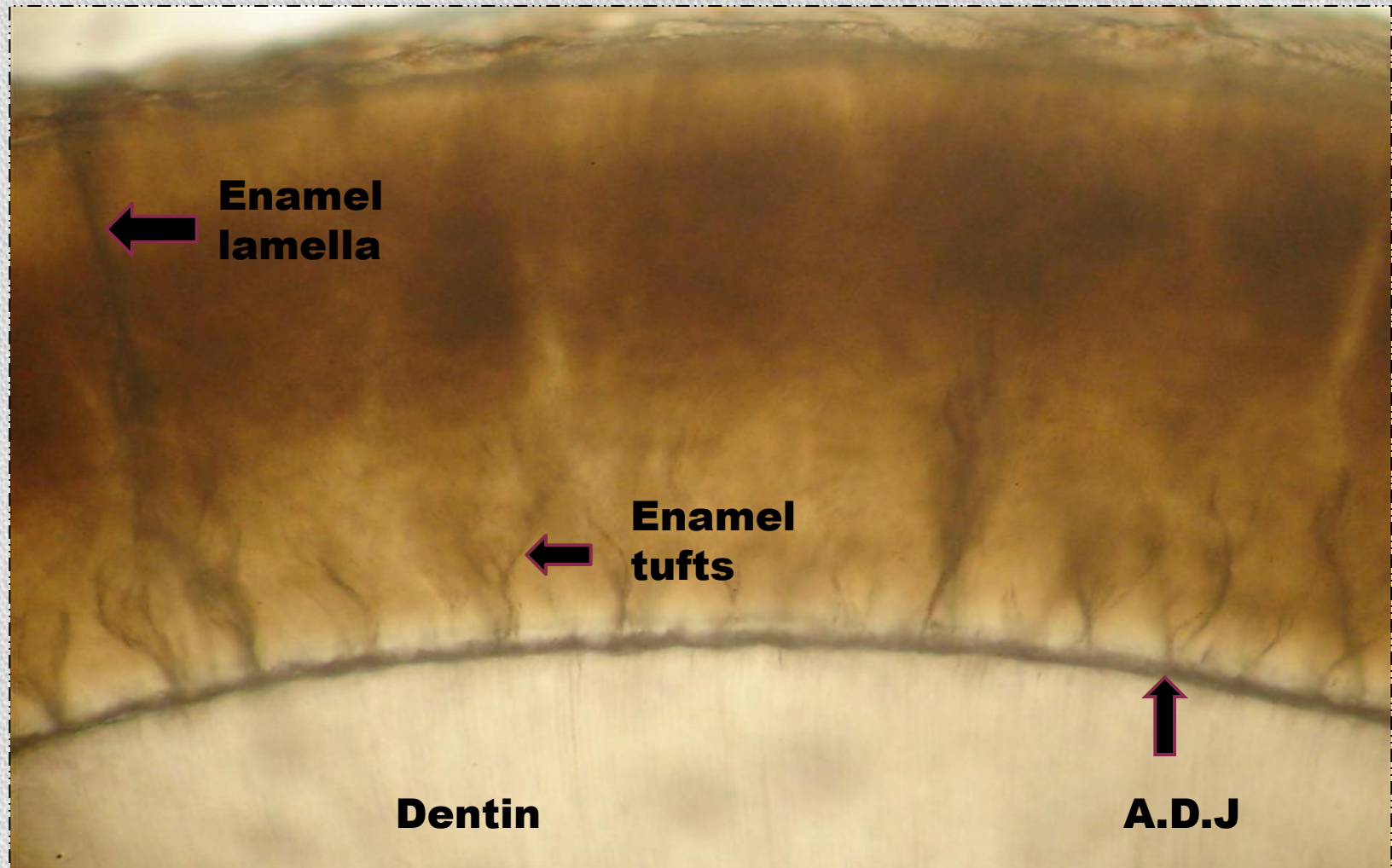
GROUND SECTION



❖ **Ground longitudinal section (G.L.S)**
in enamel showing:

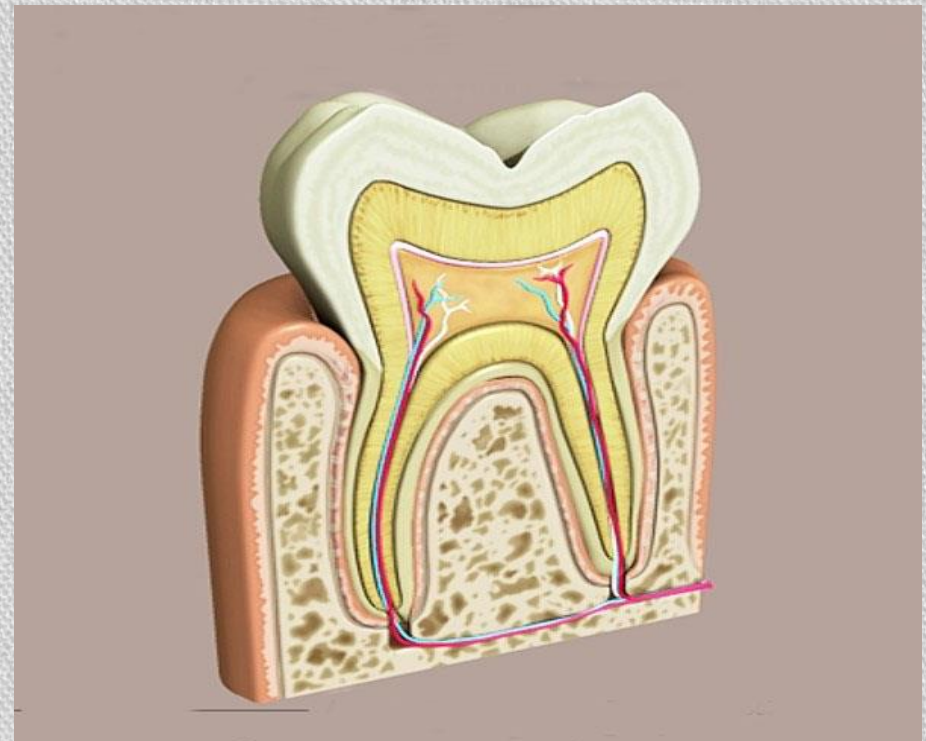


❖ Ground Transverse section (G.T.S) in enamel showing:

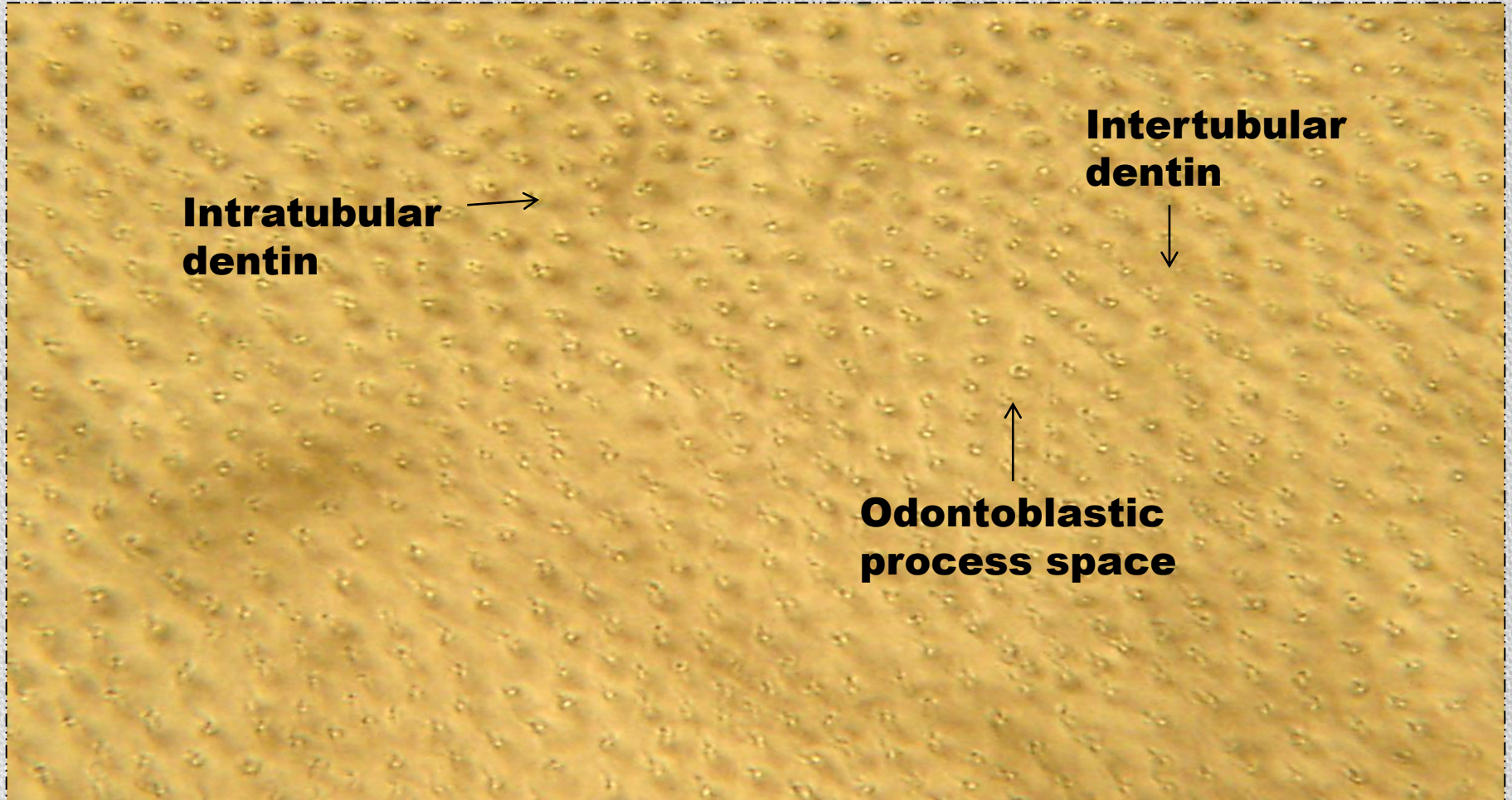


DENTIN

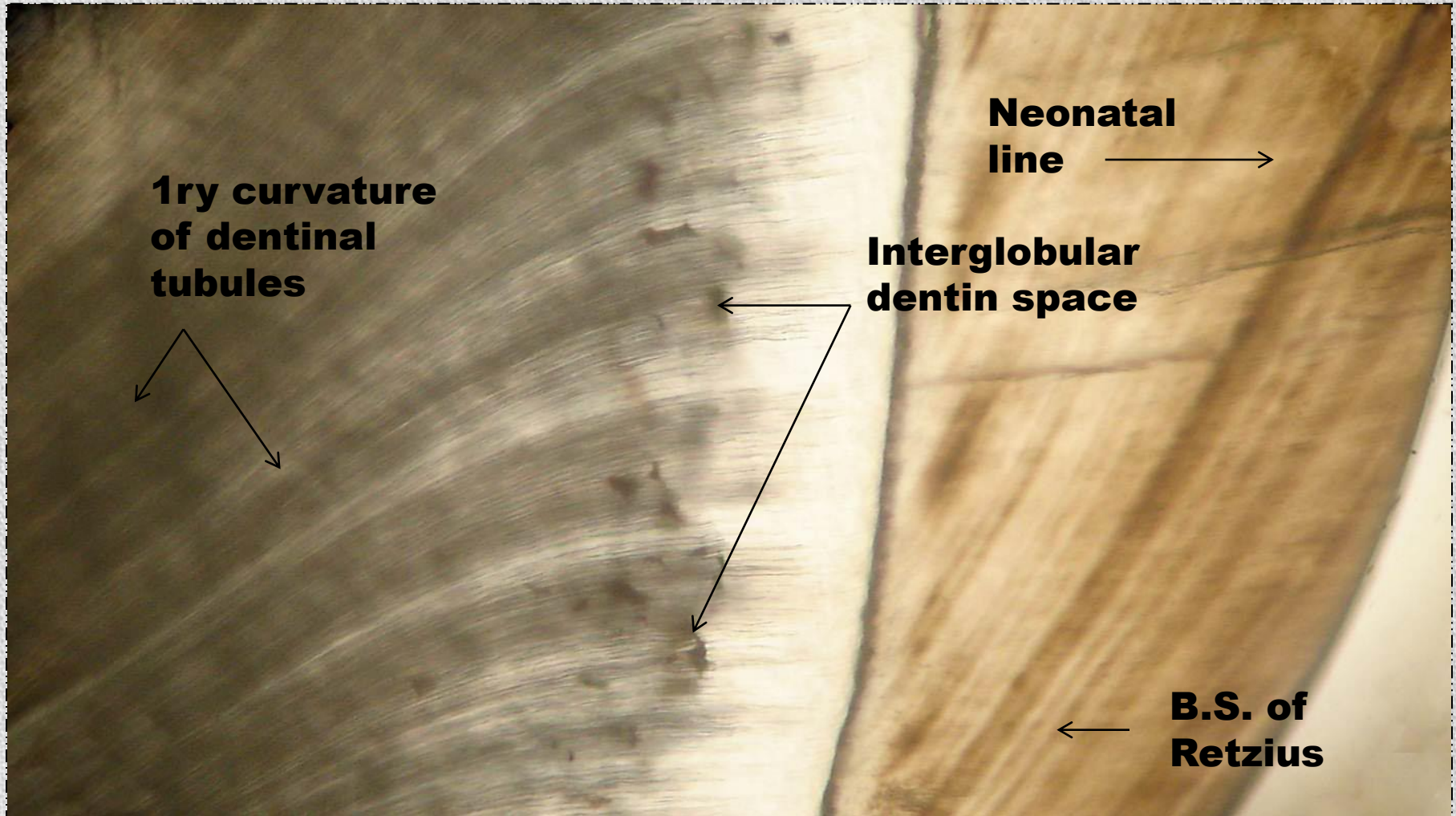
Ground section



❖ G.T.S in dentin showing:



❖ G.L.S in dentin showing:

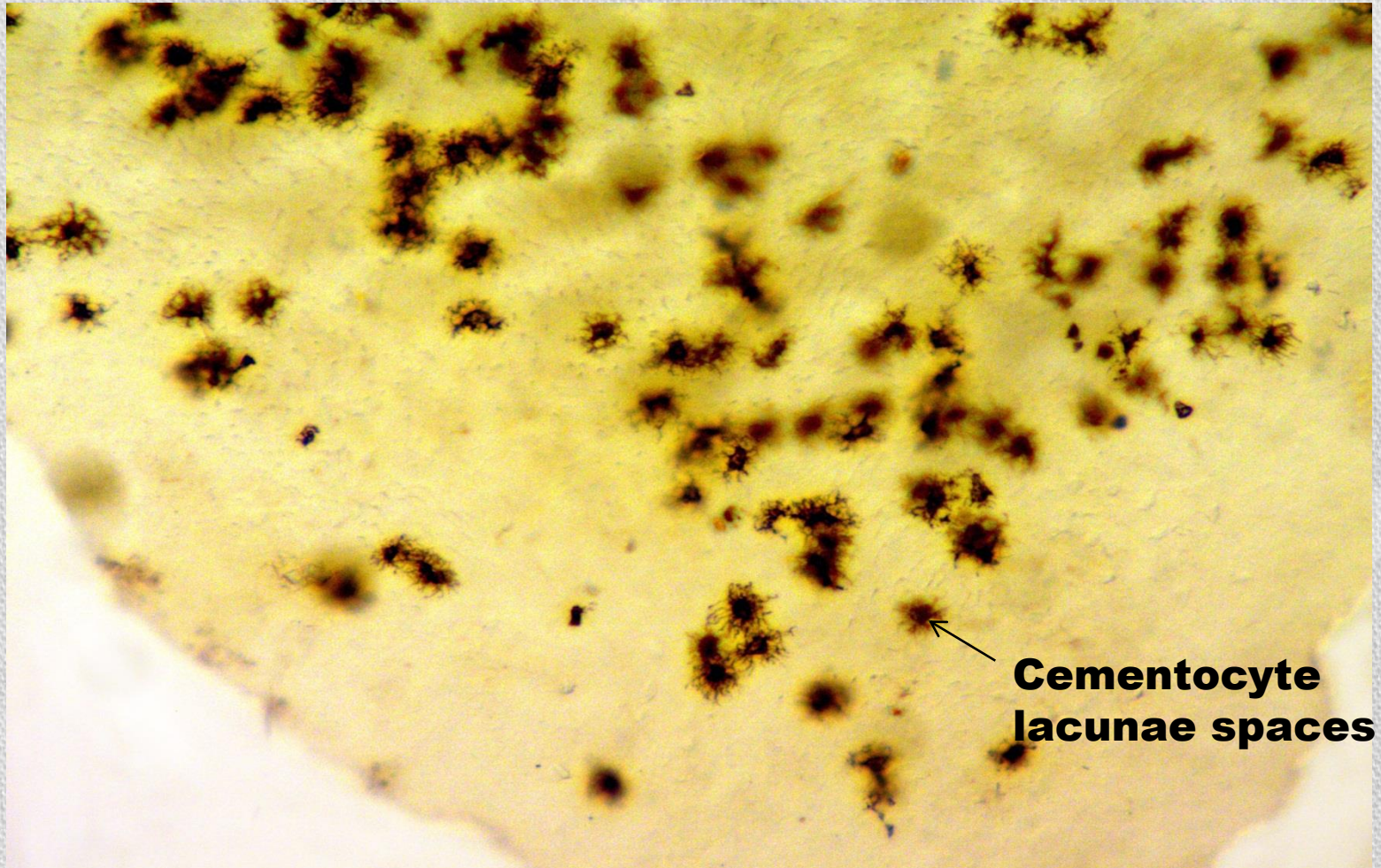


CEMENTUM

GROUND SECTION



❖ **G.L.S in cementum (apical 1/3)**
showing:
Cellular cementum

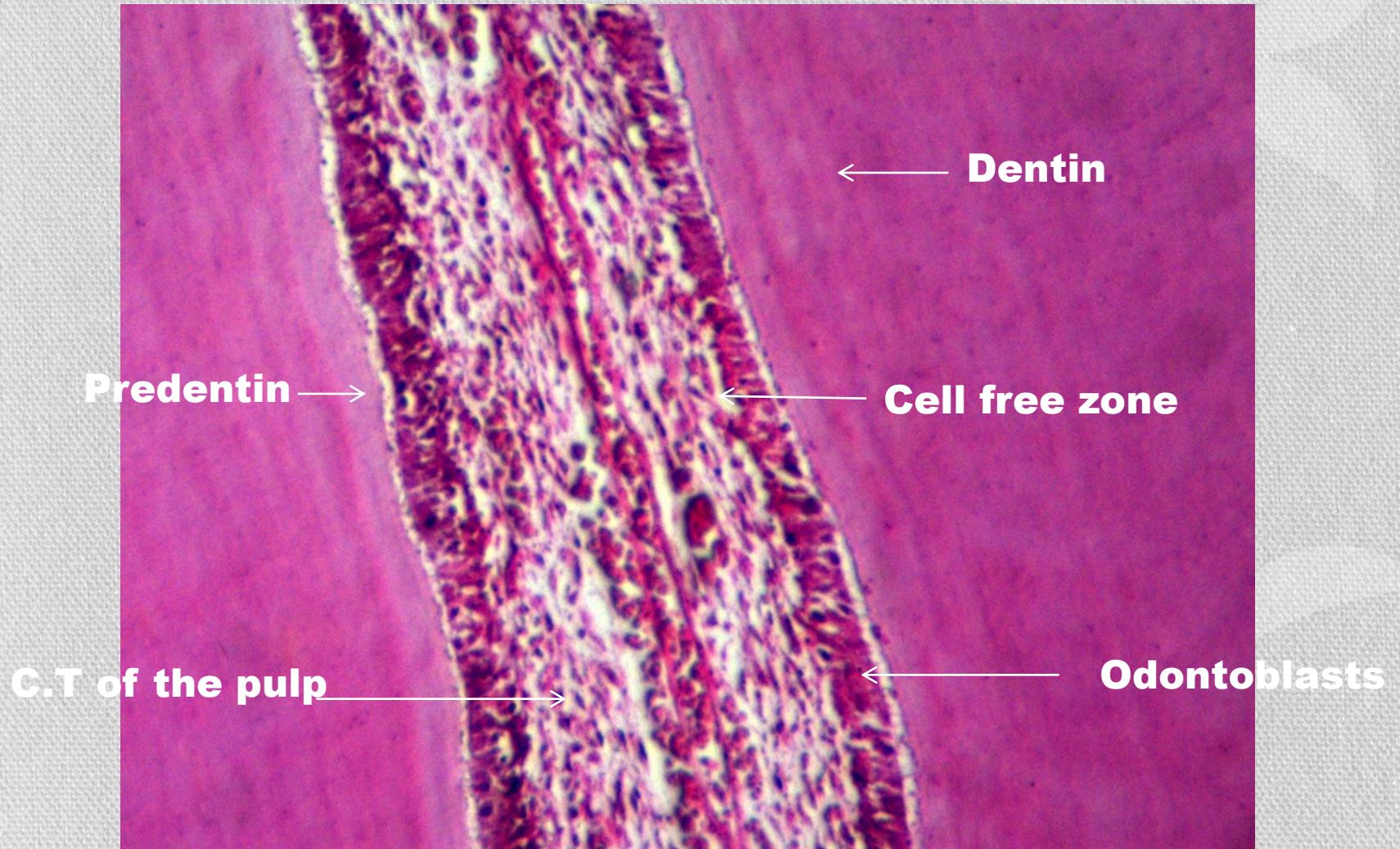


PULP

DECALCIFIED SECTION



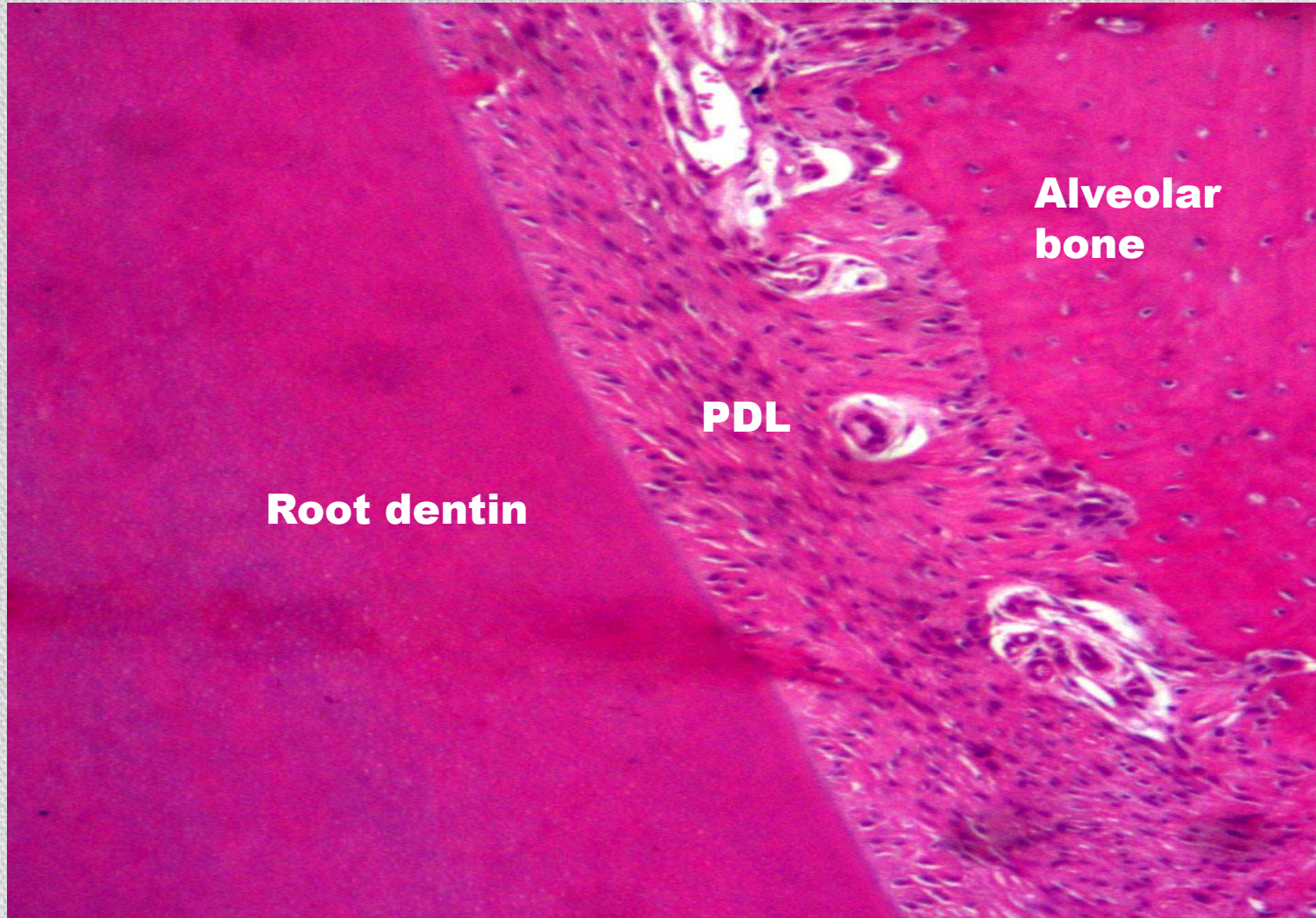
❖ Decalcified section (H&E) showing pulp in situ:



PERIODONTAL LIGAMENT DECALCIFIED SECTION

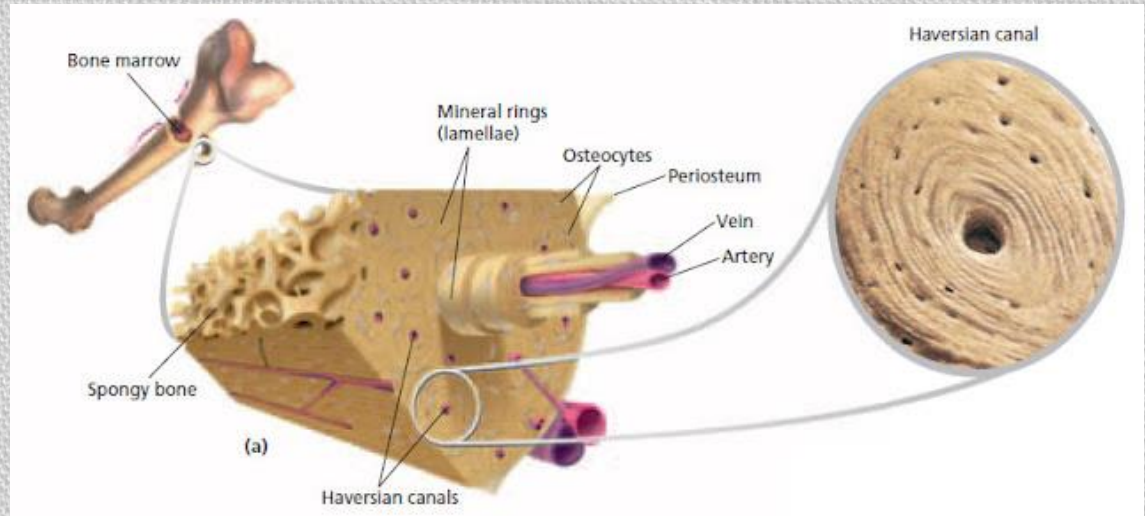


Decalcified section (H&E) showing: P.L. fibers

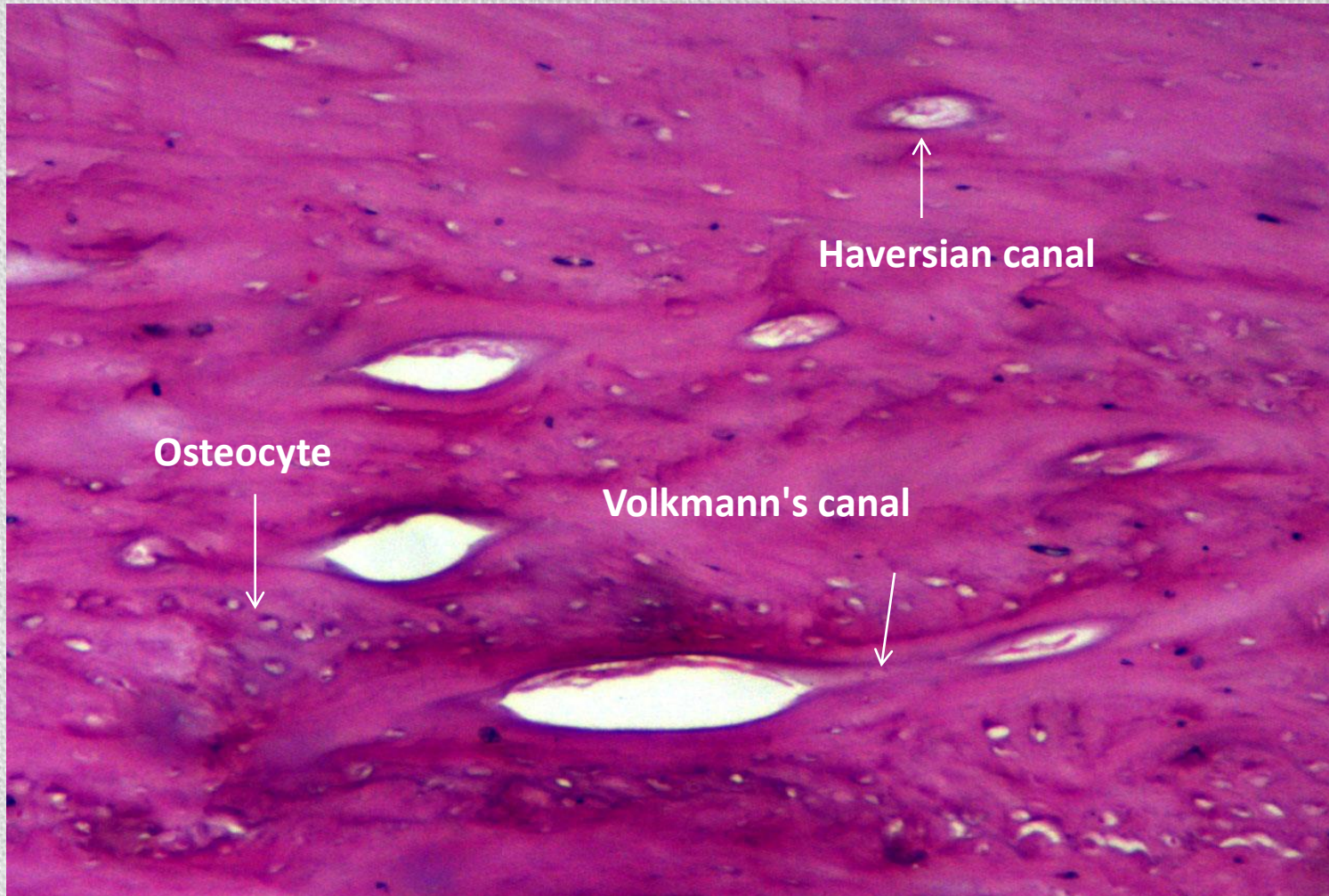


BONE

Decalcified section



❖ **Decalcified section (H&E)**
showing:
Compact bone

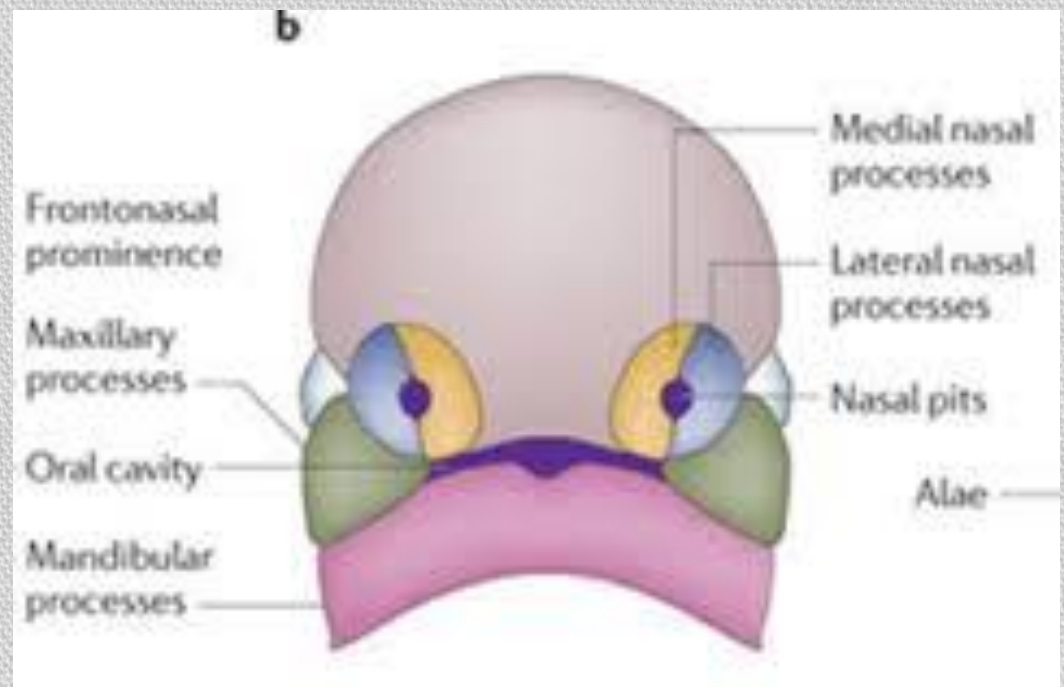


❖ **Decalcified section (H&E)
showing:
Alveolar bone**

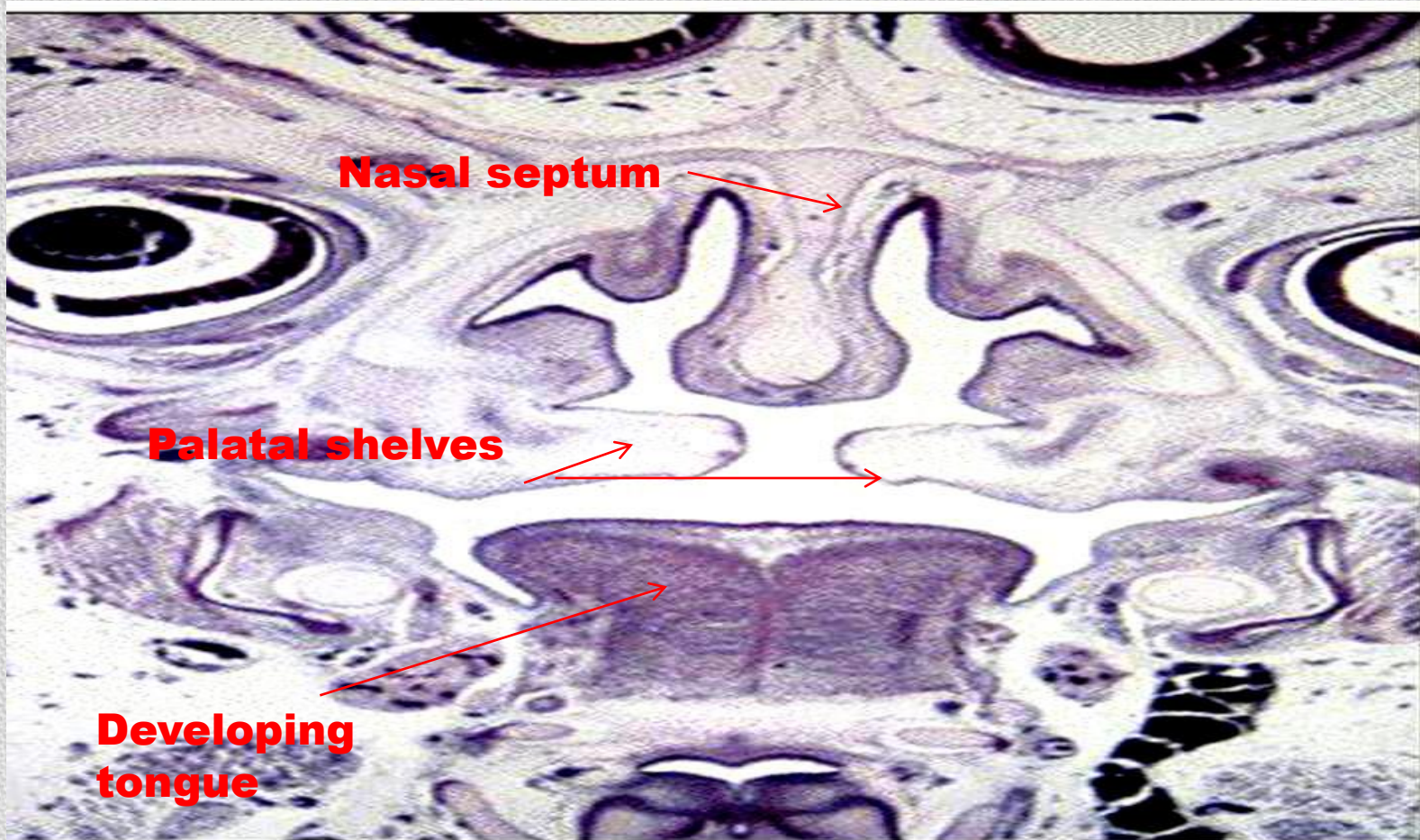


EMBRYOLOGY

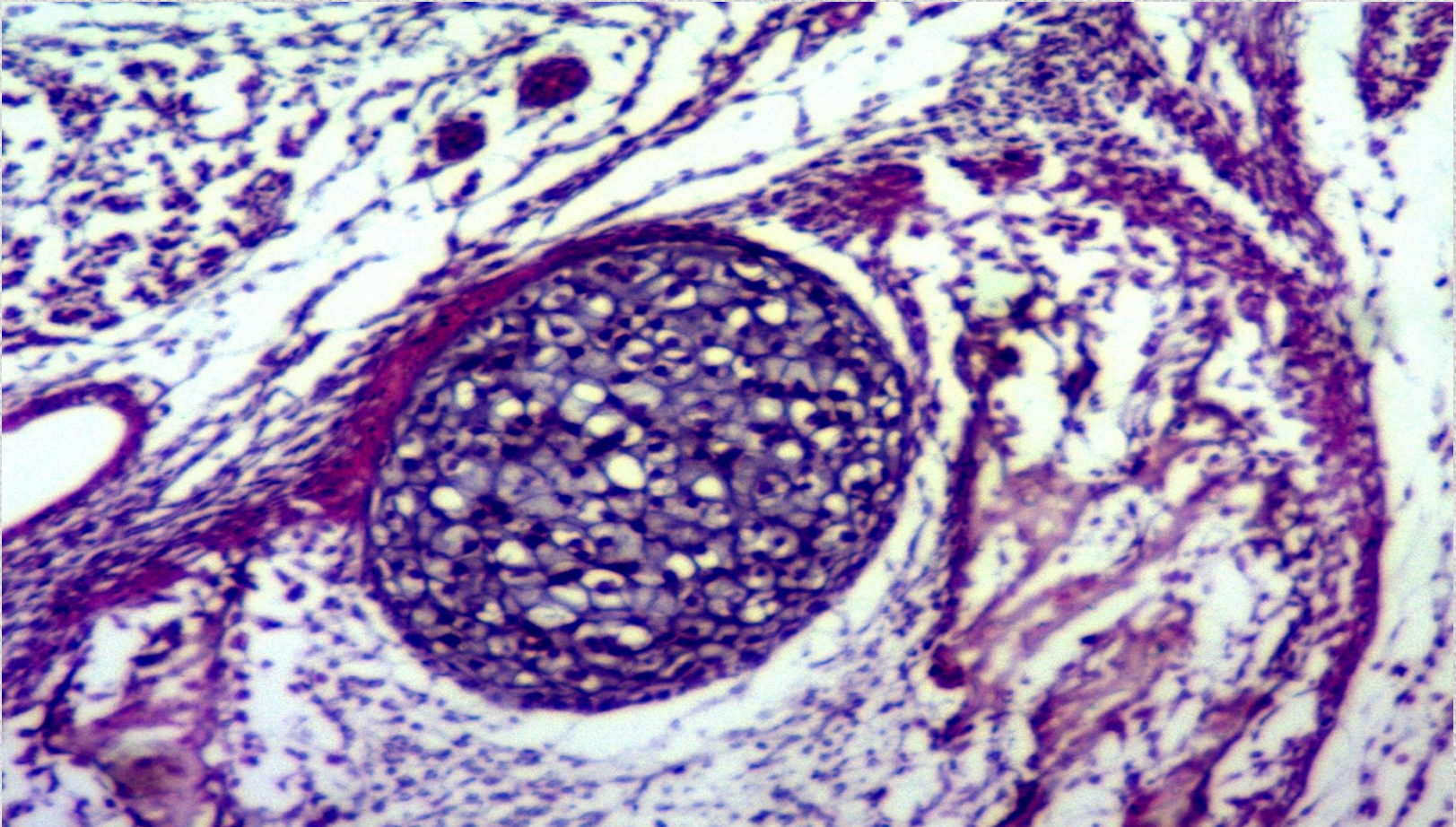
DECALCIFIED SECTION



❖ **Decalcified section (H&E) showing:
Coronal section of embryo**

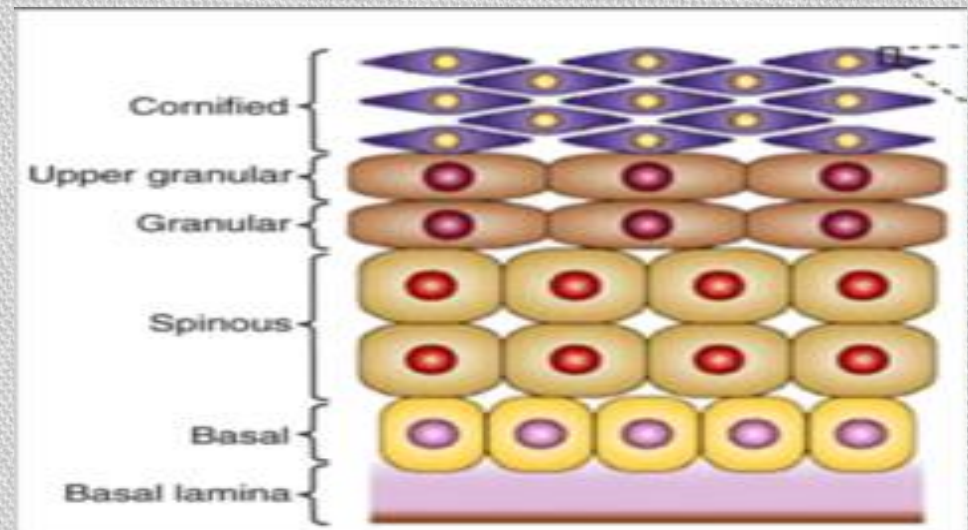


❖ **Decalcified section (H&E) showing:
Meckel's cartilage and developing bone**

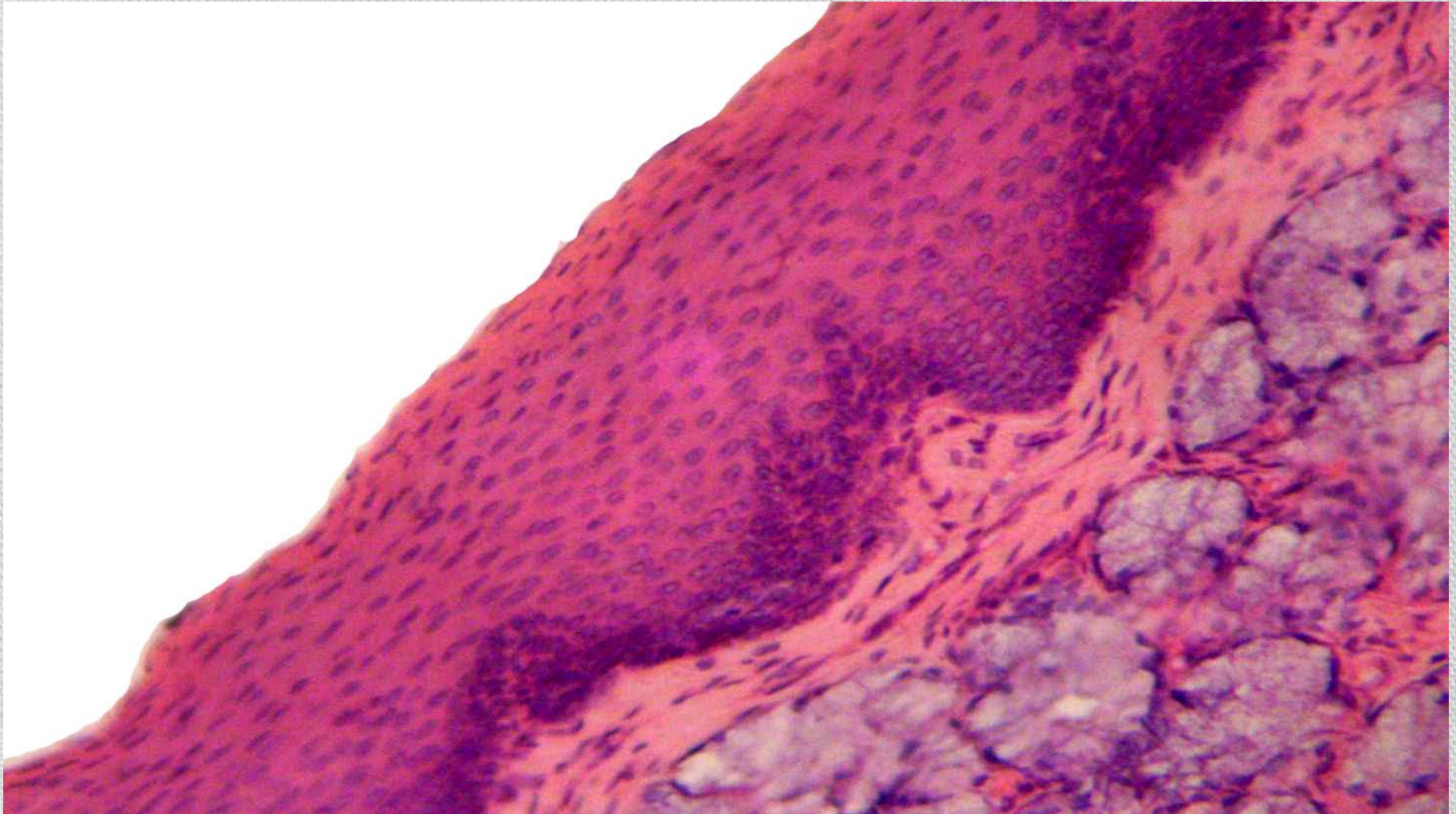


ORAL MUCOSA

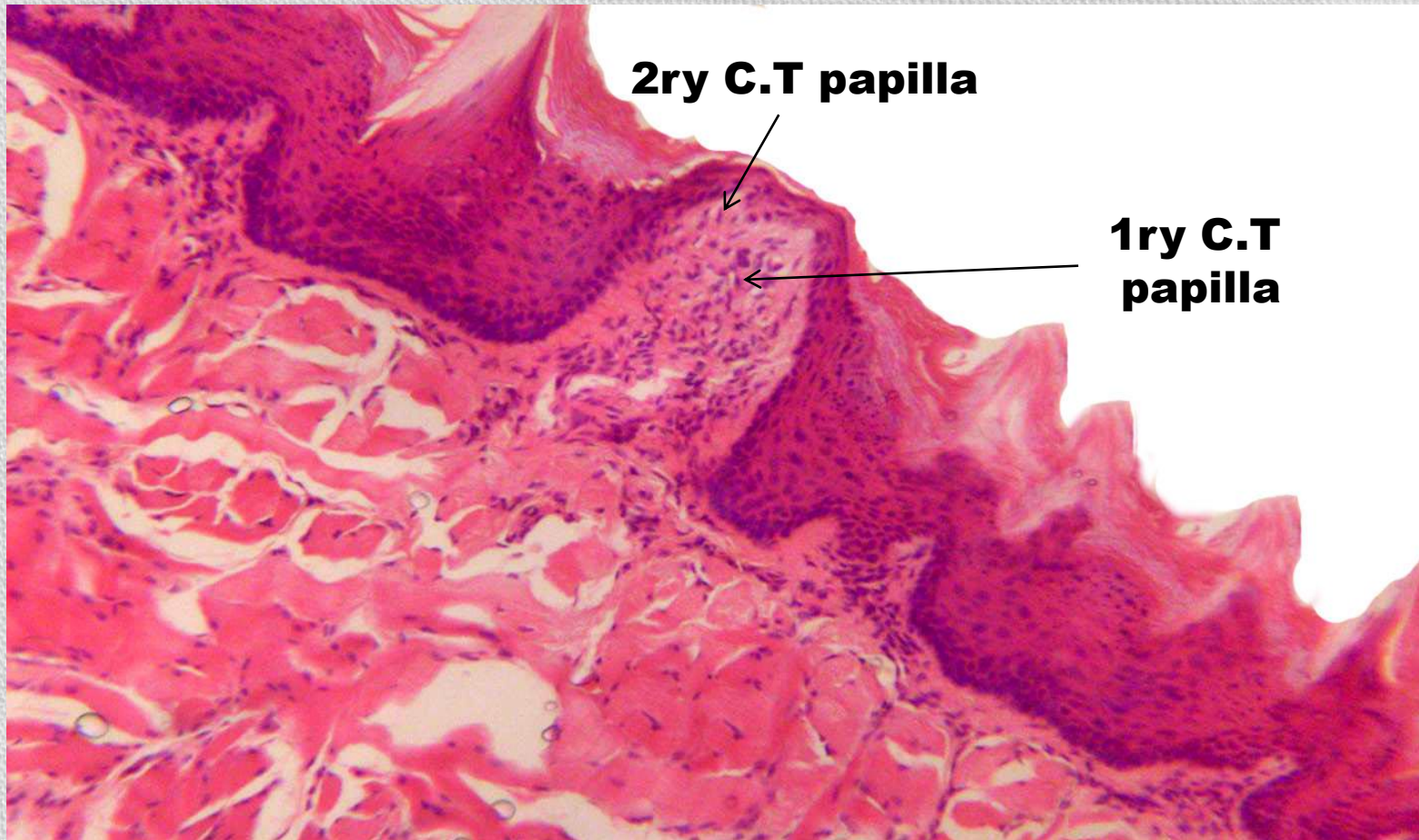
Soft paraffin section



**Soft paraffin section (H&E) showing
Non-keratinized mucosa:**

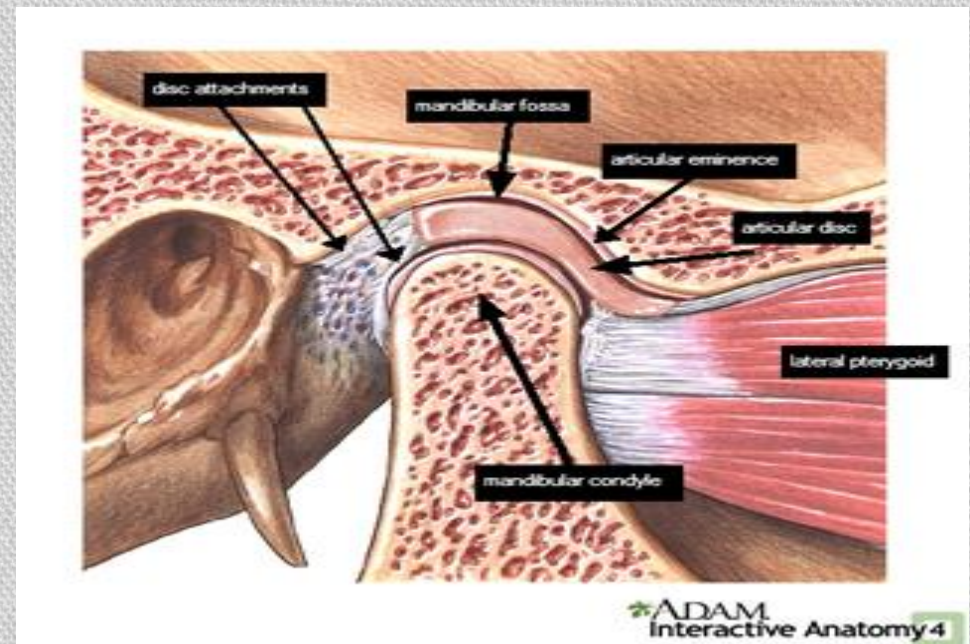


Soft paraffin section (H&E) showing **filiform** & **fungiform** papillae:

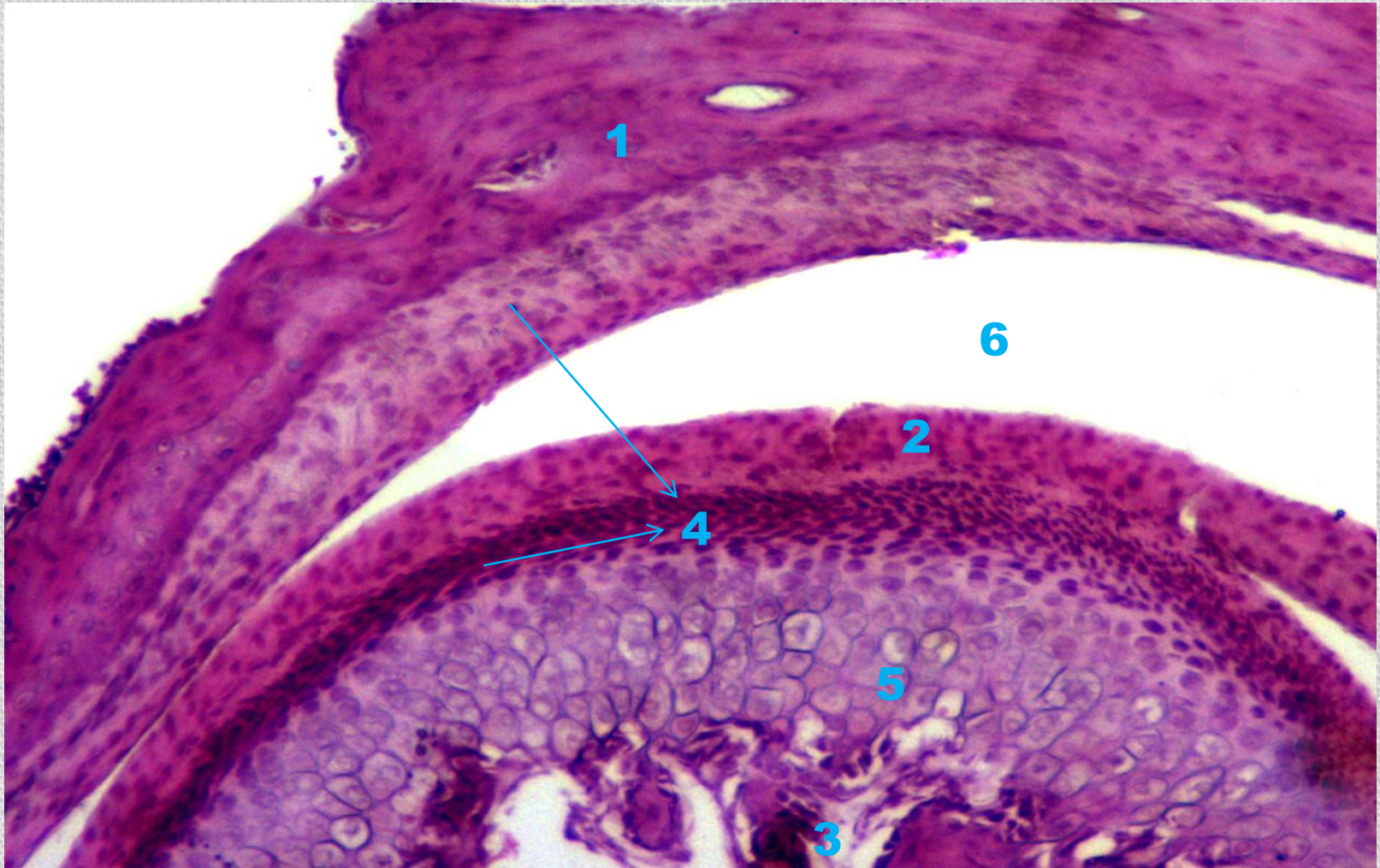


Temporo-mandibular joint (T.M.J)

Decalcified section



Decalcified section H&E showing: T.M.J.



Decalcified section H&E showing: T.M.J.

- 1. Articular fossa.**
- 2. Articular disc.**
- 3. Condyle.**
- 4. Fibrous covering.**
- 5. Hyaline cartilage.**
- 6. Upper joint cavity.**





THANK YOU