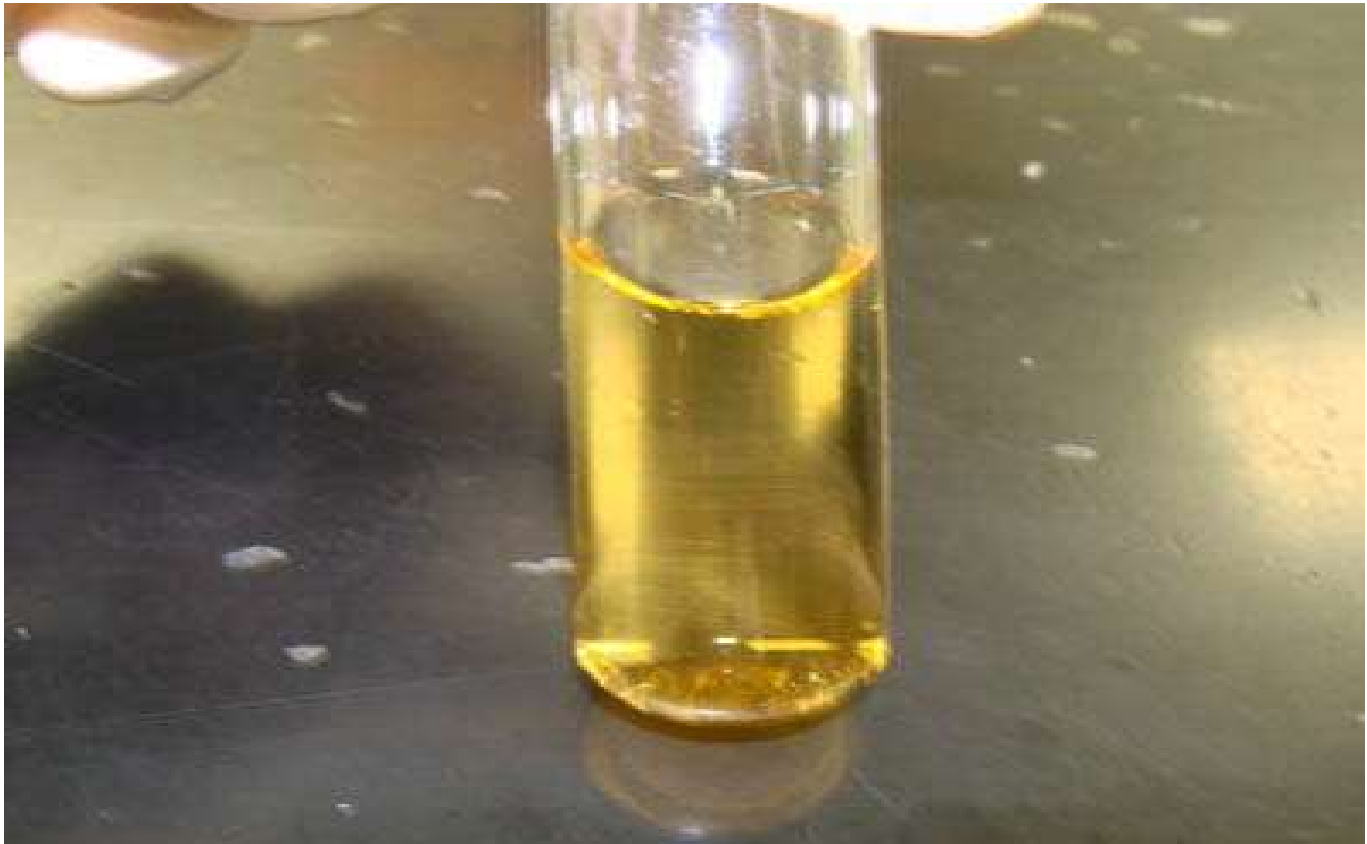


Practical Microbiology Spots



Peptone water tube



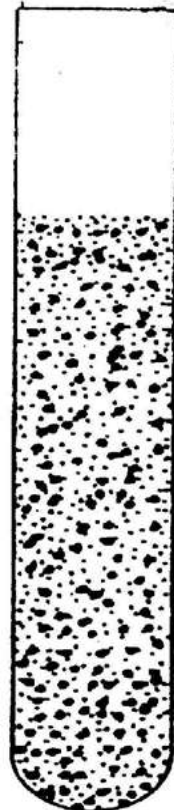
Nutrient broth tube un-inoculated



Aerobic



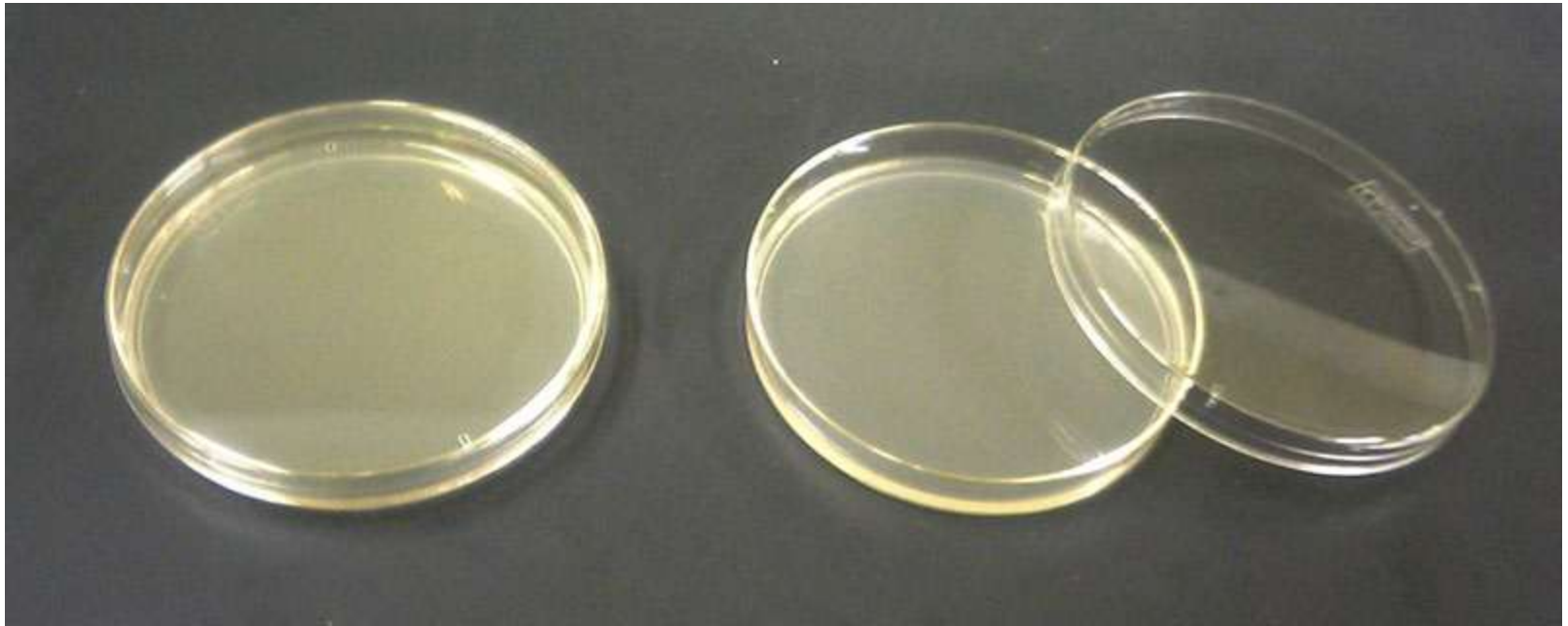
Anaerobic



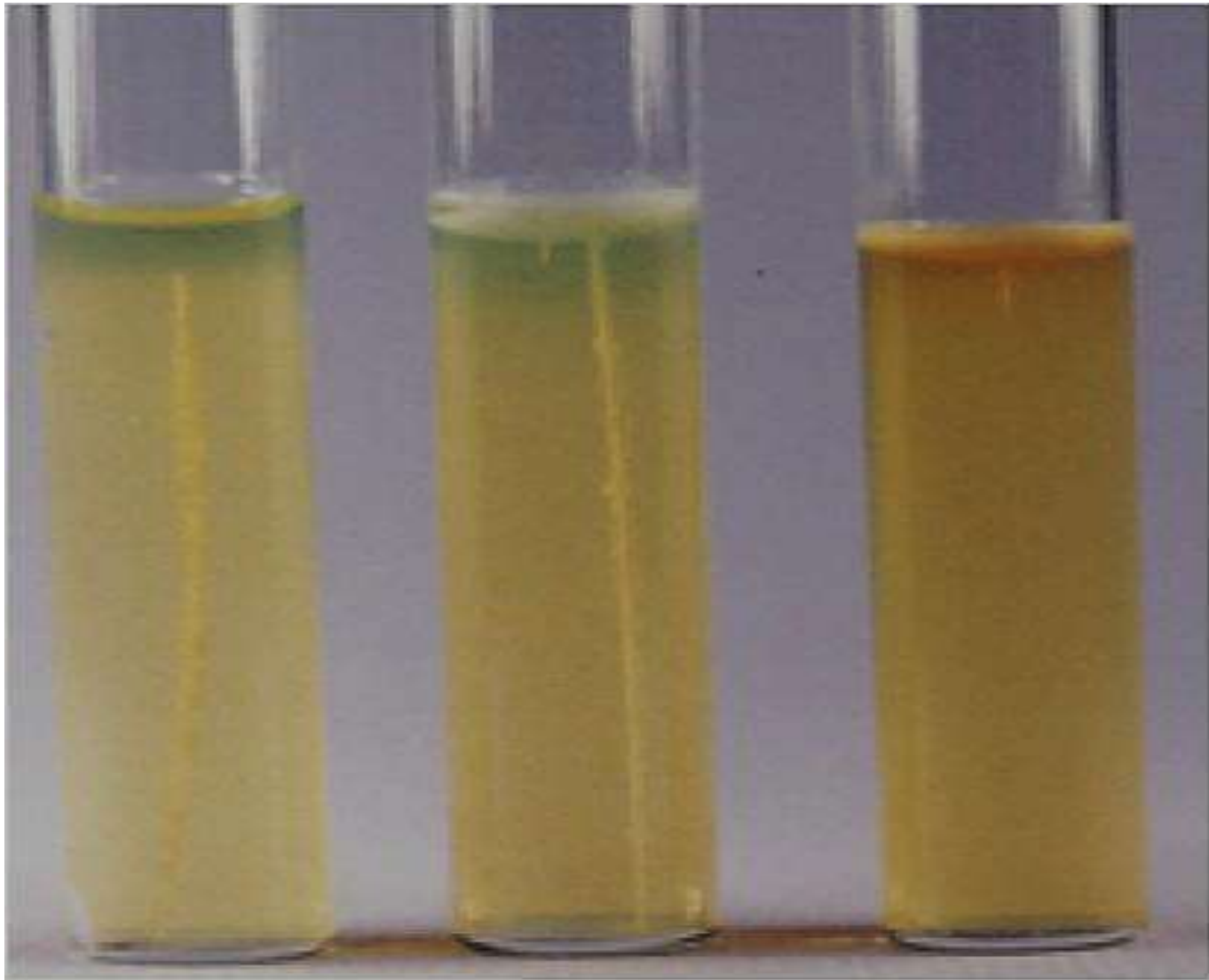
**Fuctative
anaerobes**



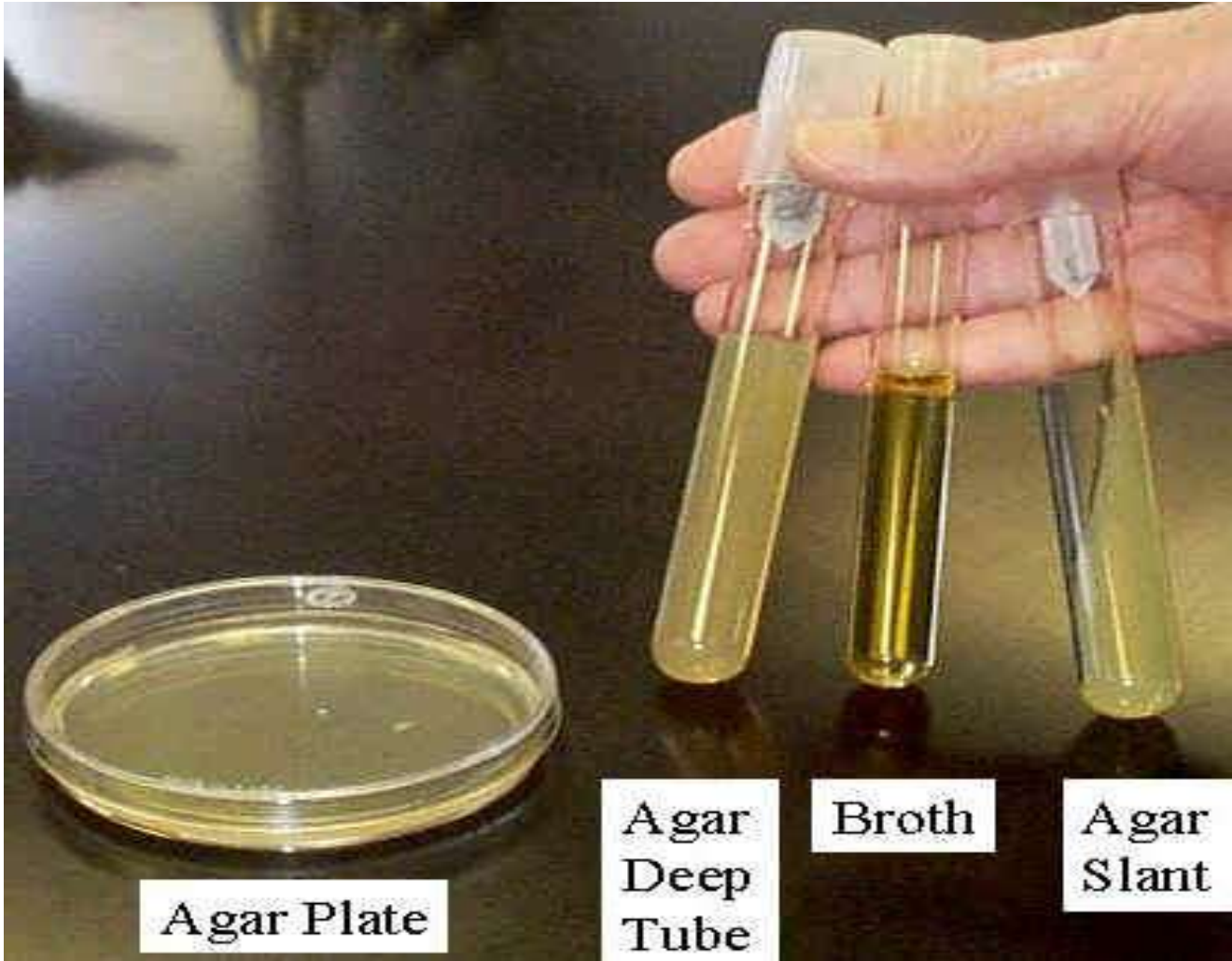
Microaerophilic



Nutrient Agar Plate un-inoculated



Deep agar tube



Agar Plate

Agar
Deep
Tube

Broth

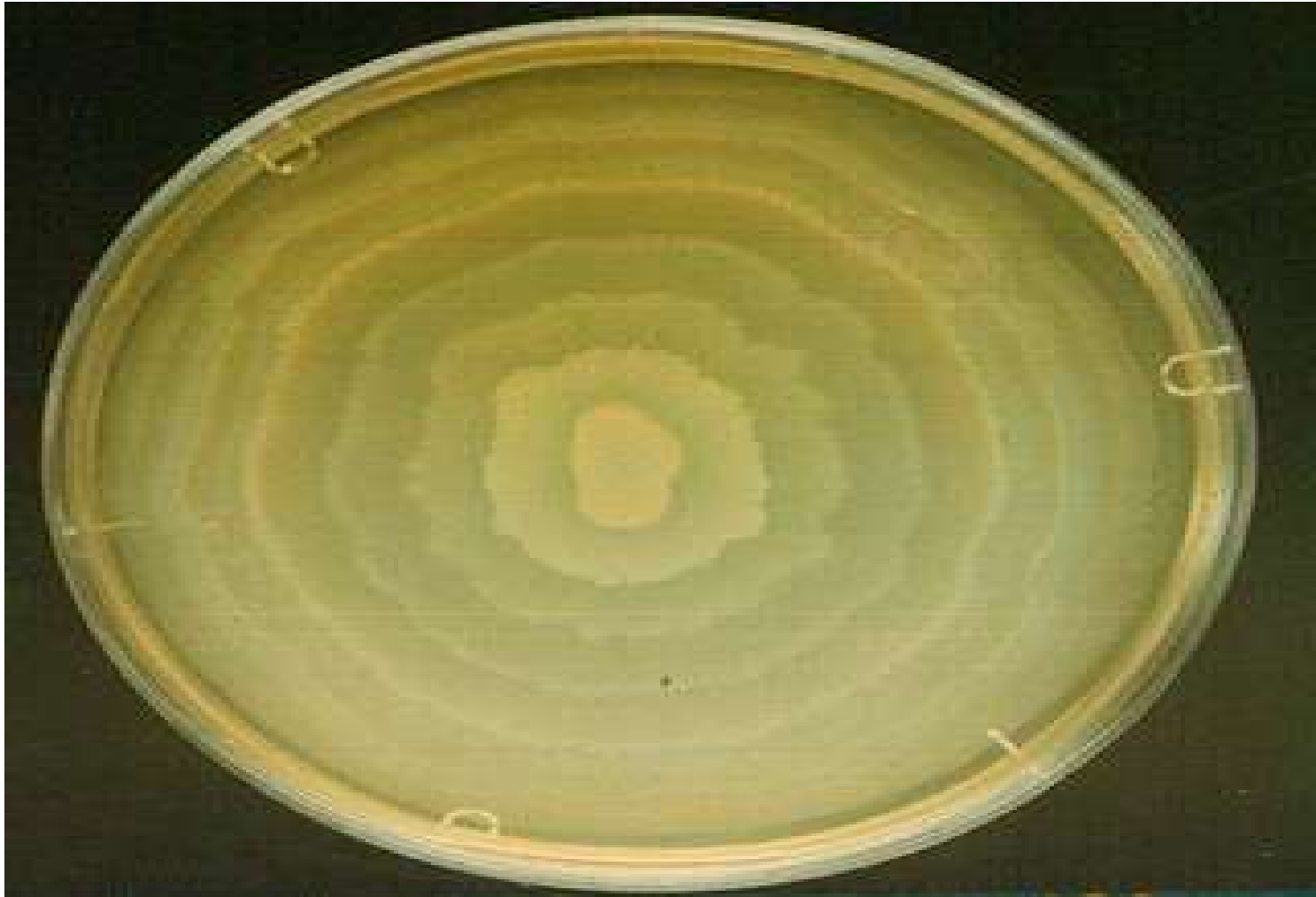
Agar
Slant



Pseudomonas aeruginosa exopigment



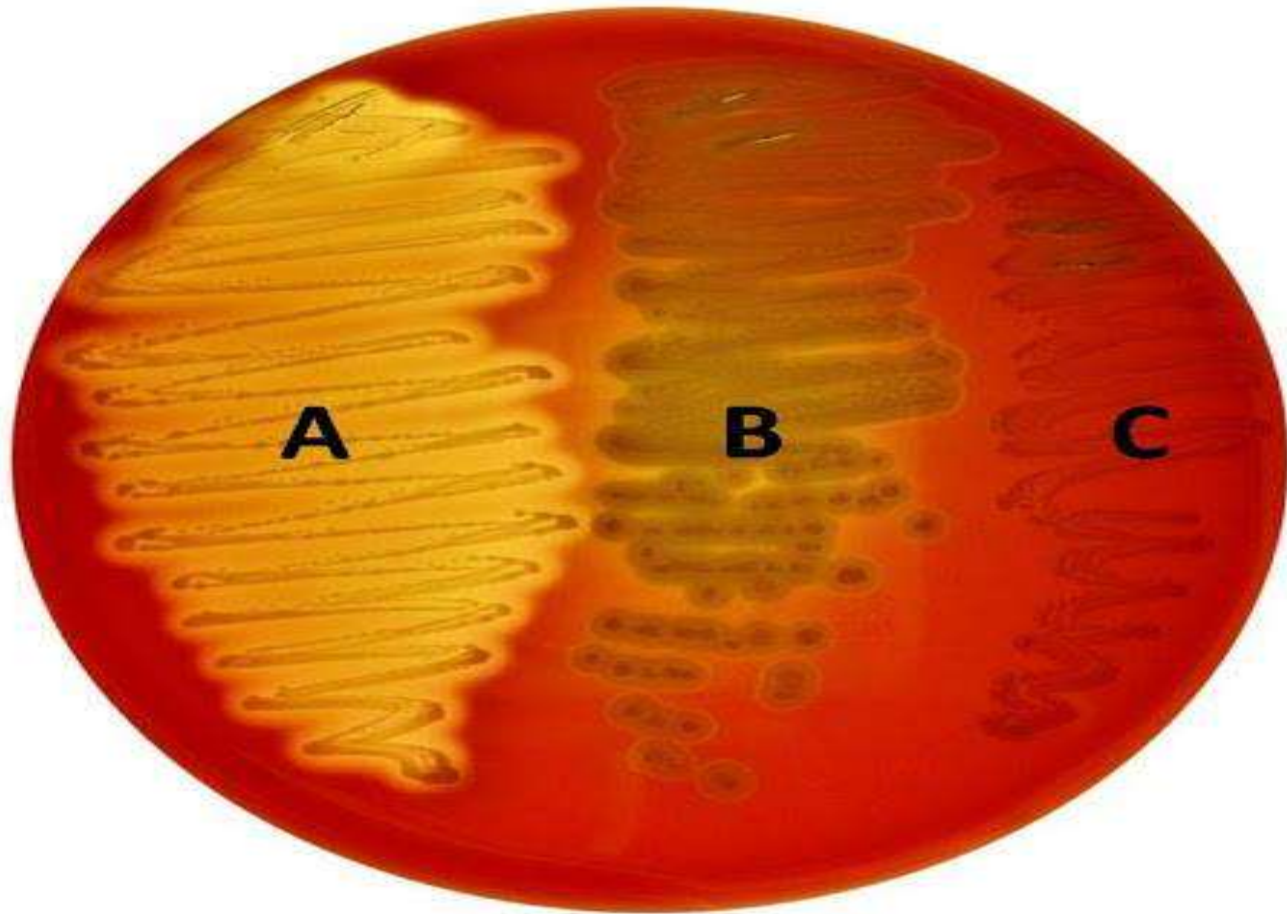
Staphylococcus aureus endopigment



Proteus swarming



Blood Agar Plate un-inoculated



Copyright © 2008 Pearson Education, Inc., publishing as Benjamin Cummings.

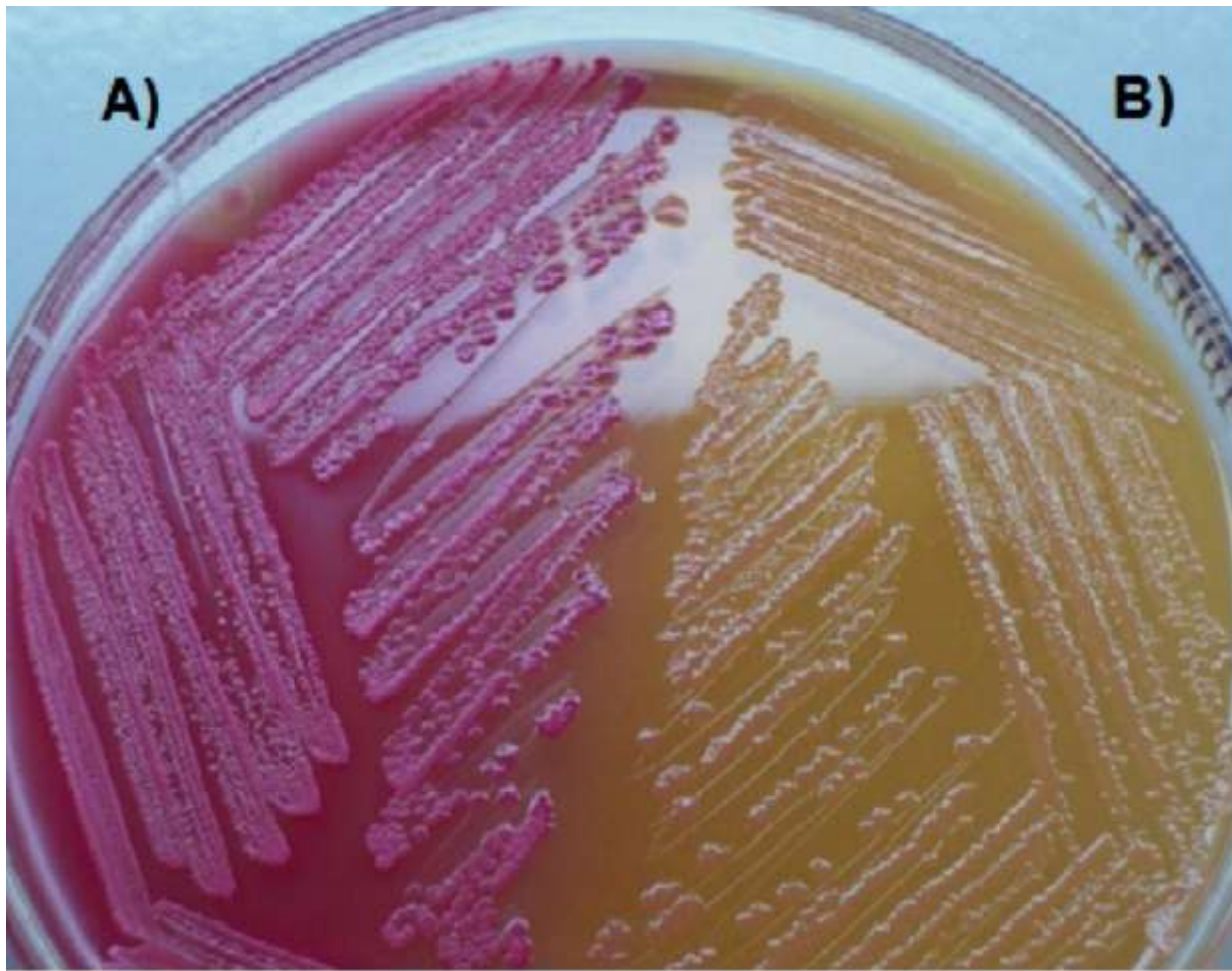
- A) Beta hemolysis on blood agar**
- B) Alpha hemolysis on blood agar**
- C) Gamma hemolysis on blood Agar**



Chocolate Agar Plate un-inoculated



MacConkey Agar plate un-inoculated



A) LF on MacConkey Agar plate
B) NLF on MacConkey Agar plate



CLED Agar plate un-inoculated



Lactose fermenter colonies on CLED



Non lactose fermenter (N LF) colonies CLED



Dorset's egg medium



Loeffler's serum



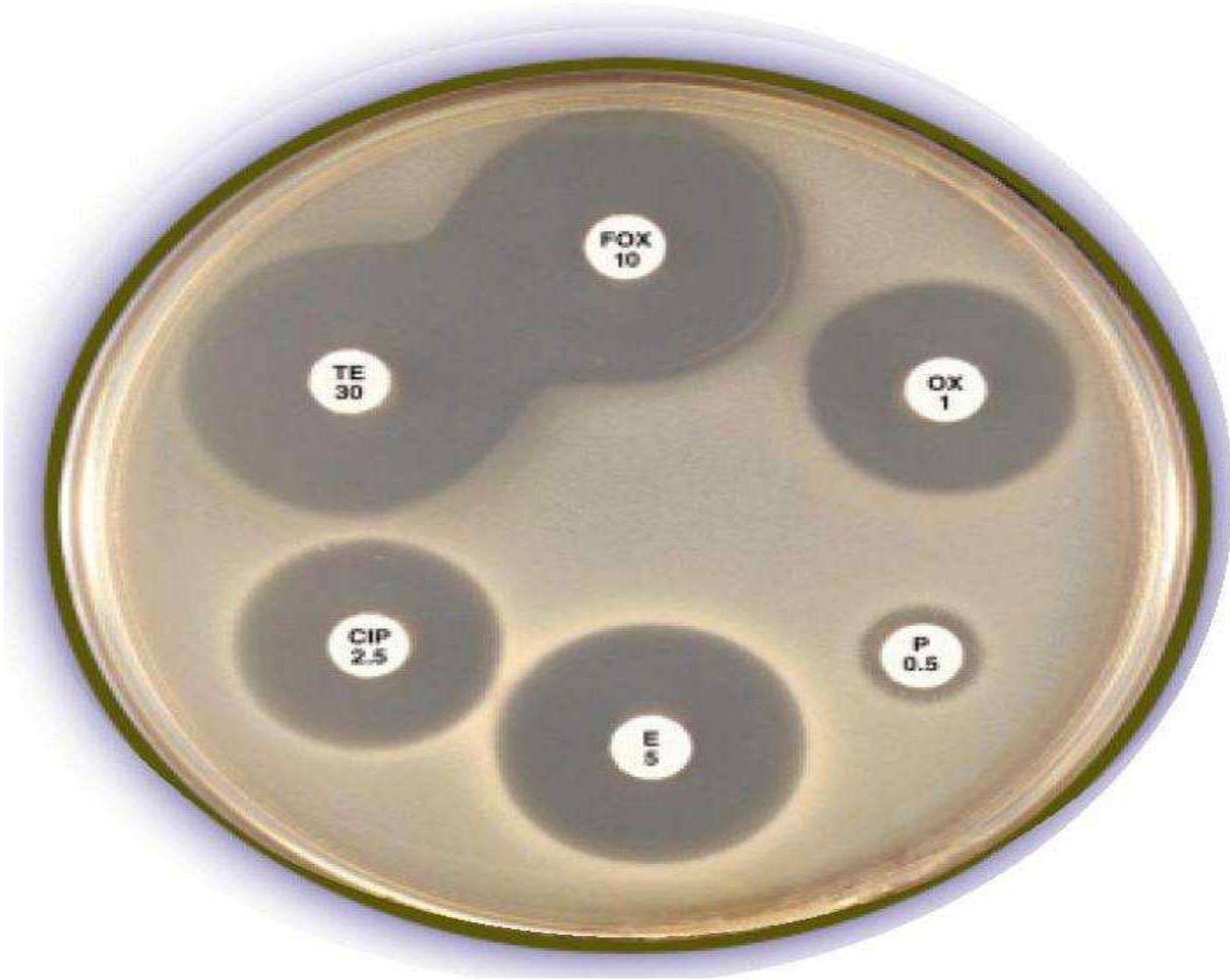
Lowenstein jensen medium un-inoculated



Lowenstein jensen medium inoculated



Candida colonies on SDA



Antibiotic susceptibility testing

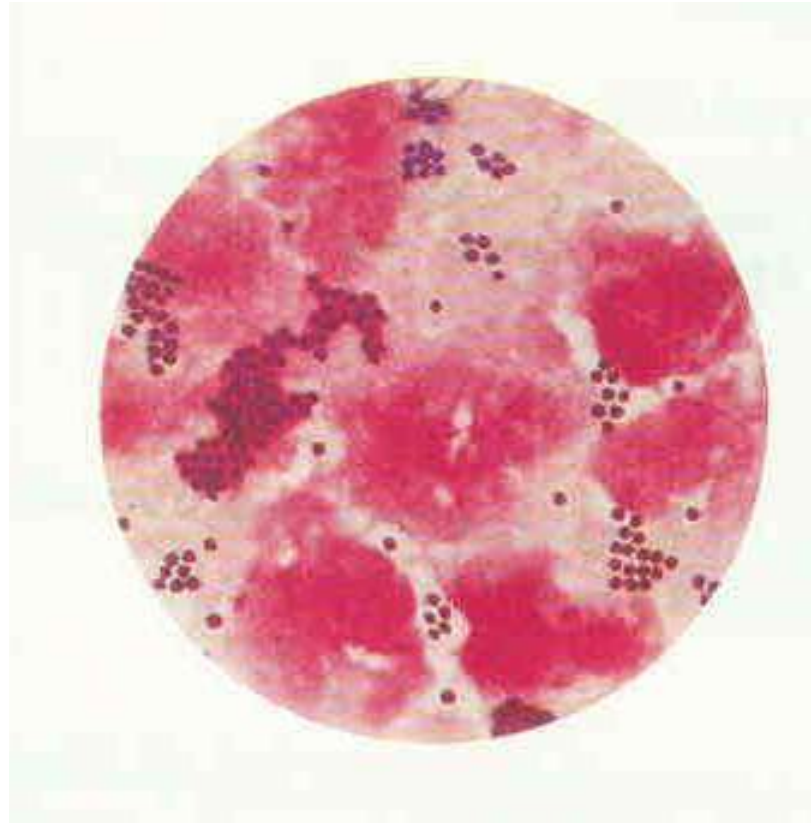


MICROSCOPIC

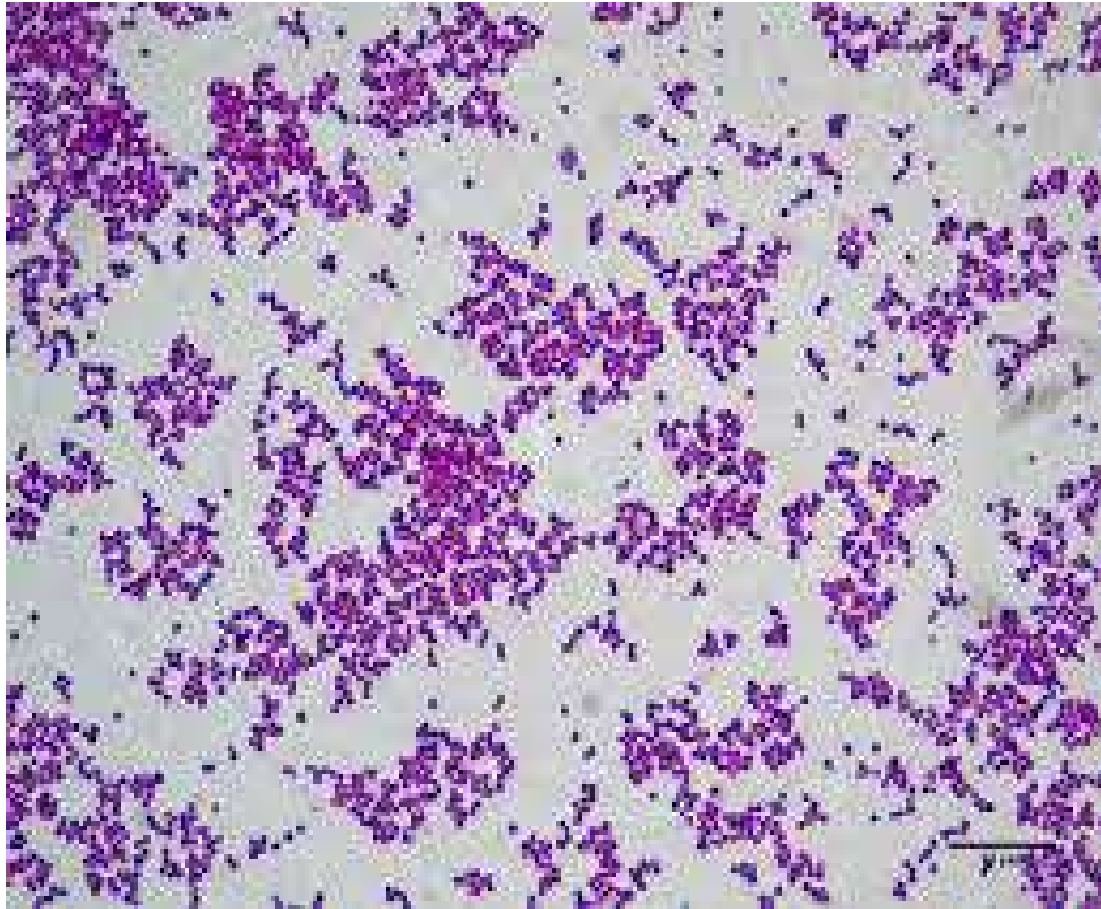


EXAMINATION

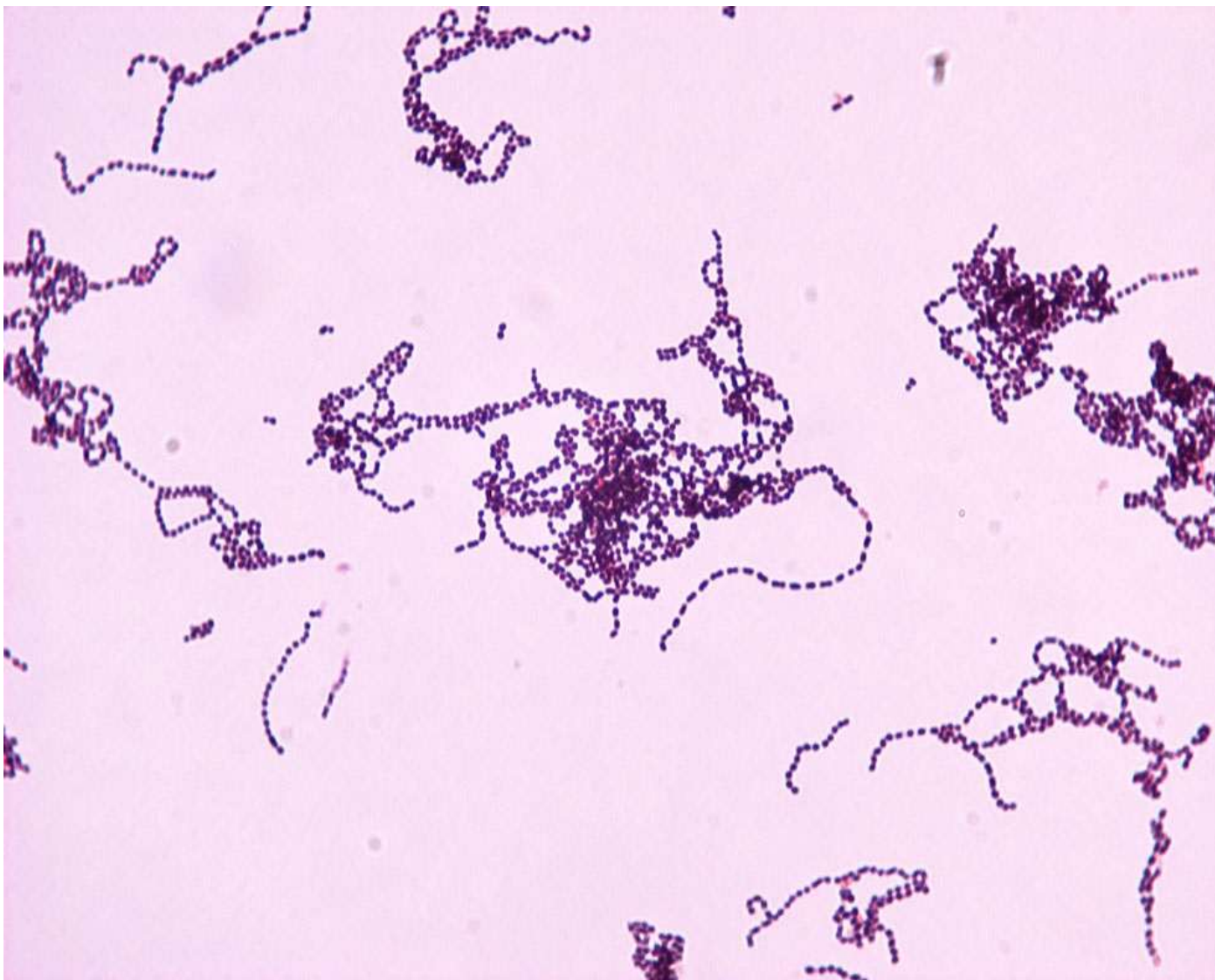




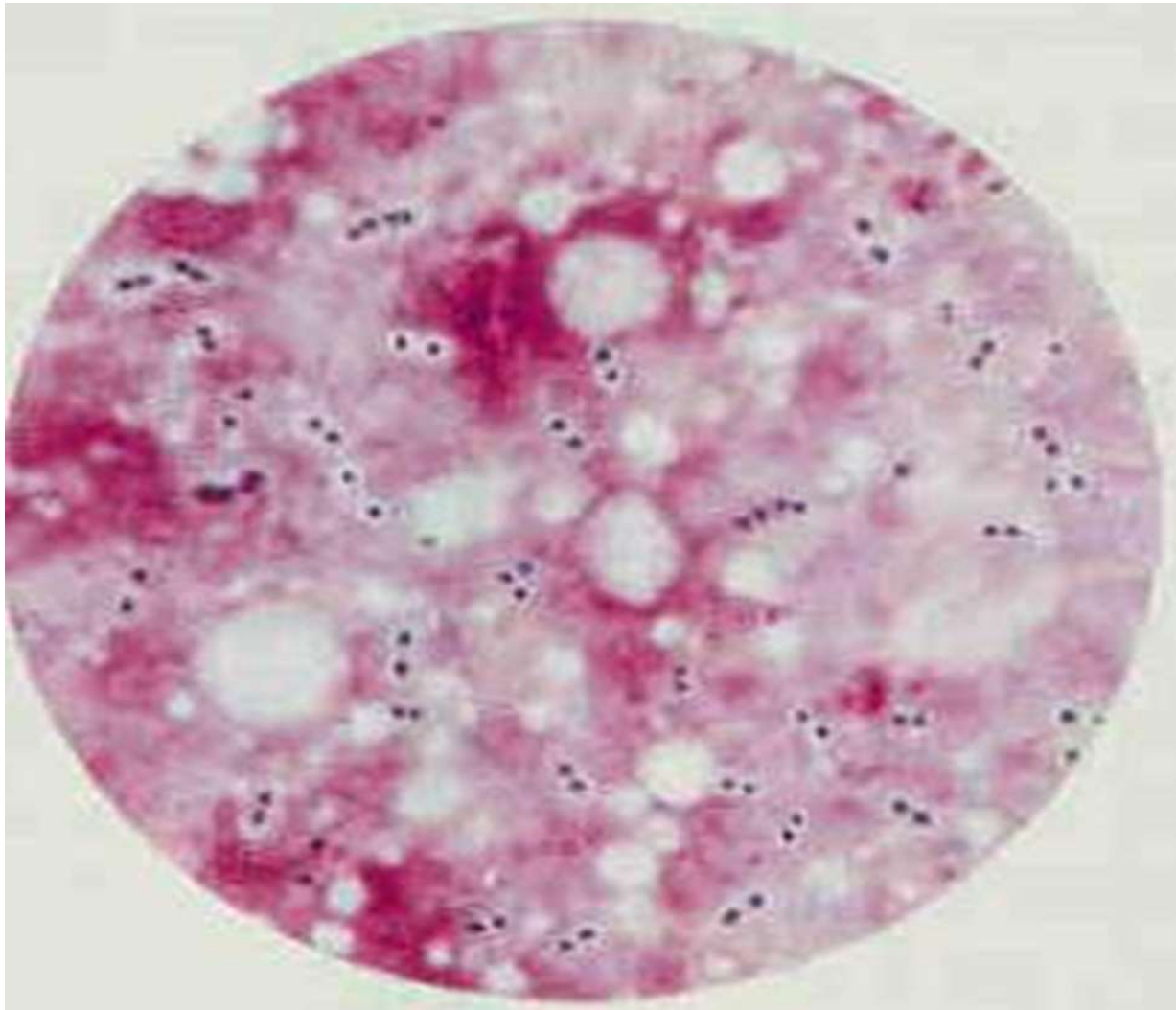
•STAPH. IN PUS GRAM STAIN



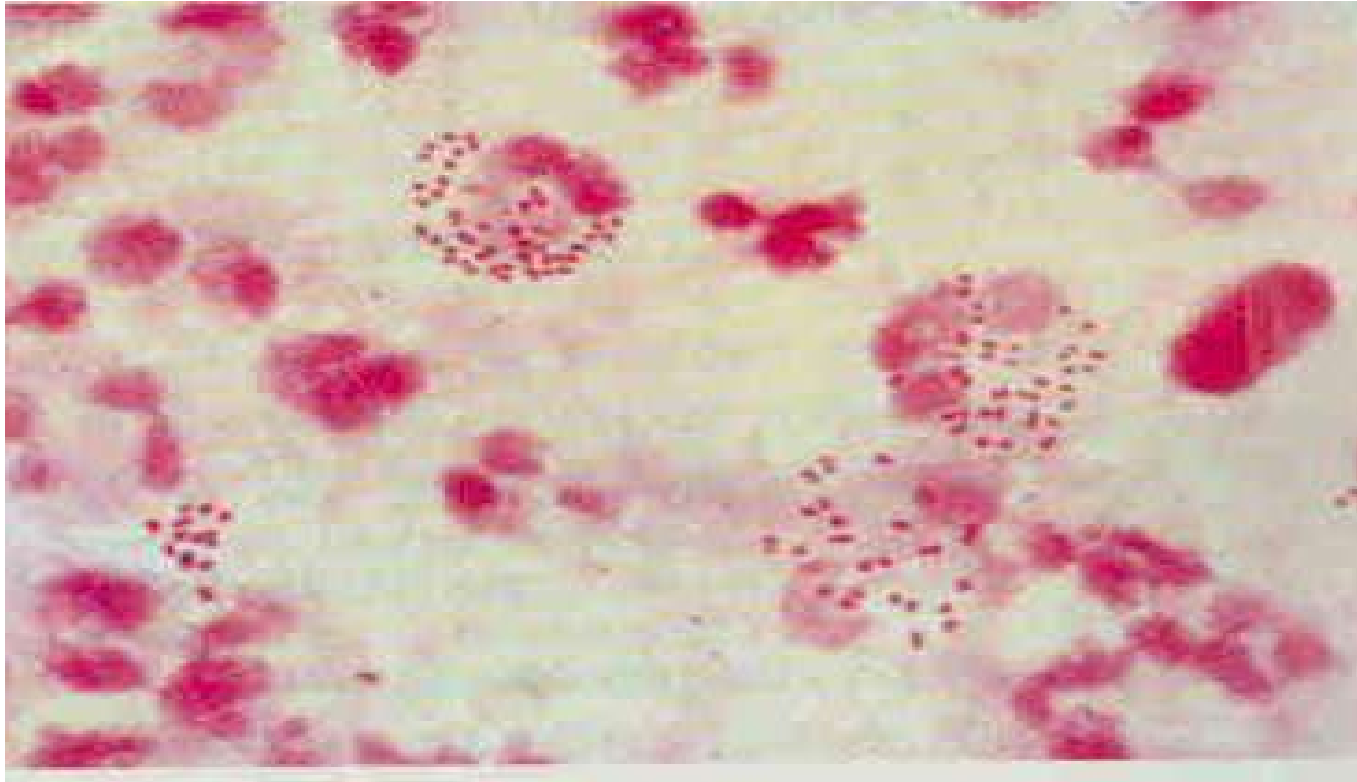
Staphylococci in culture by Gram stain



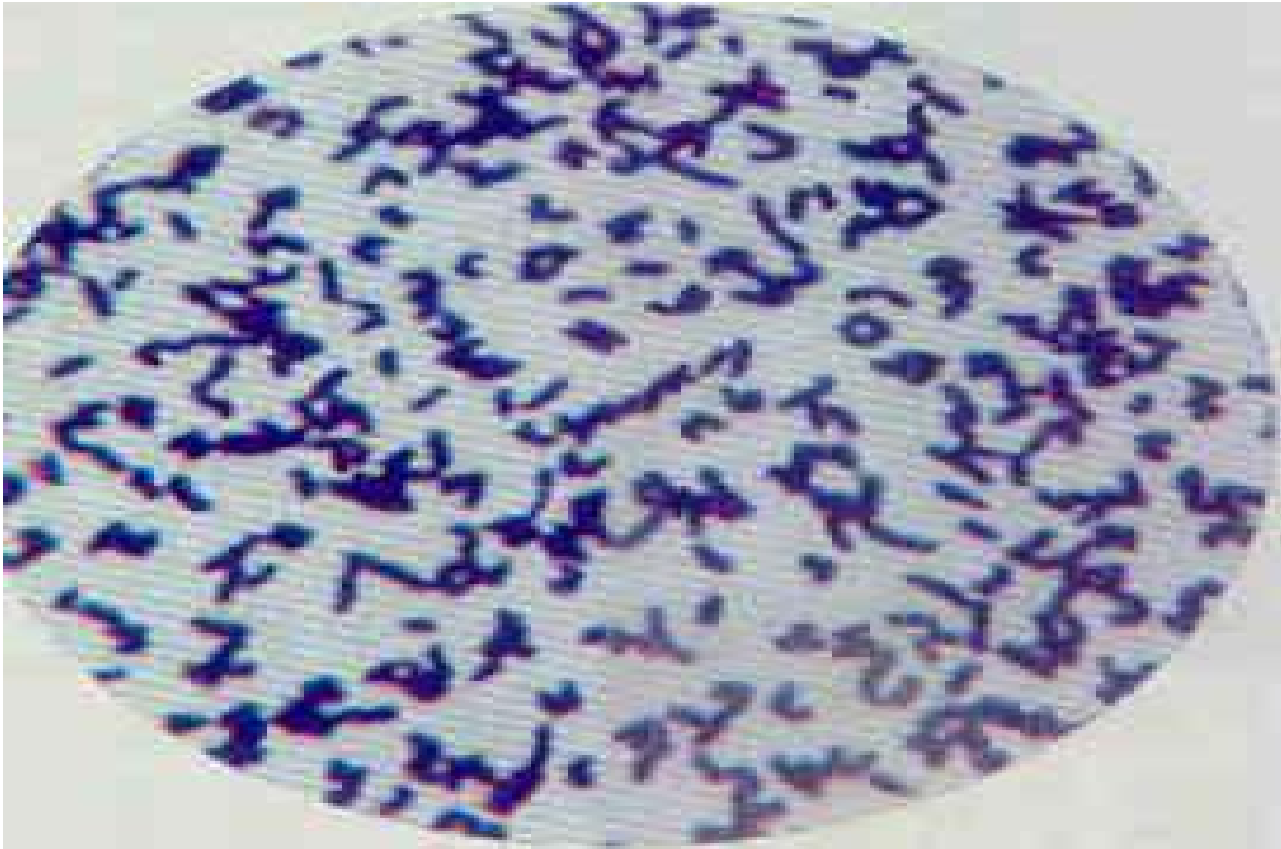
Streptococcus pyogenes in culture by Gram stain



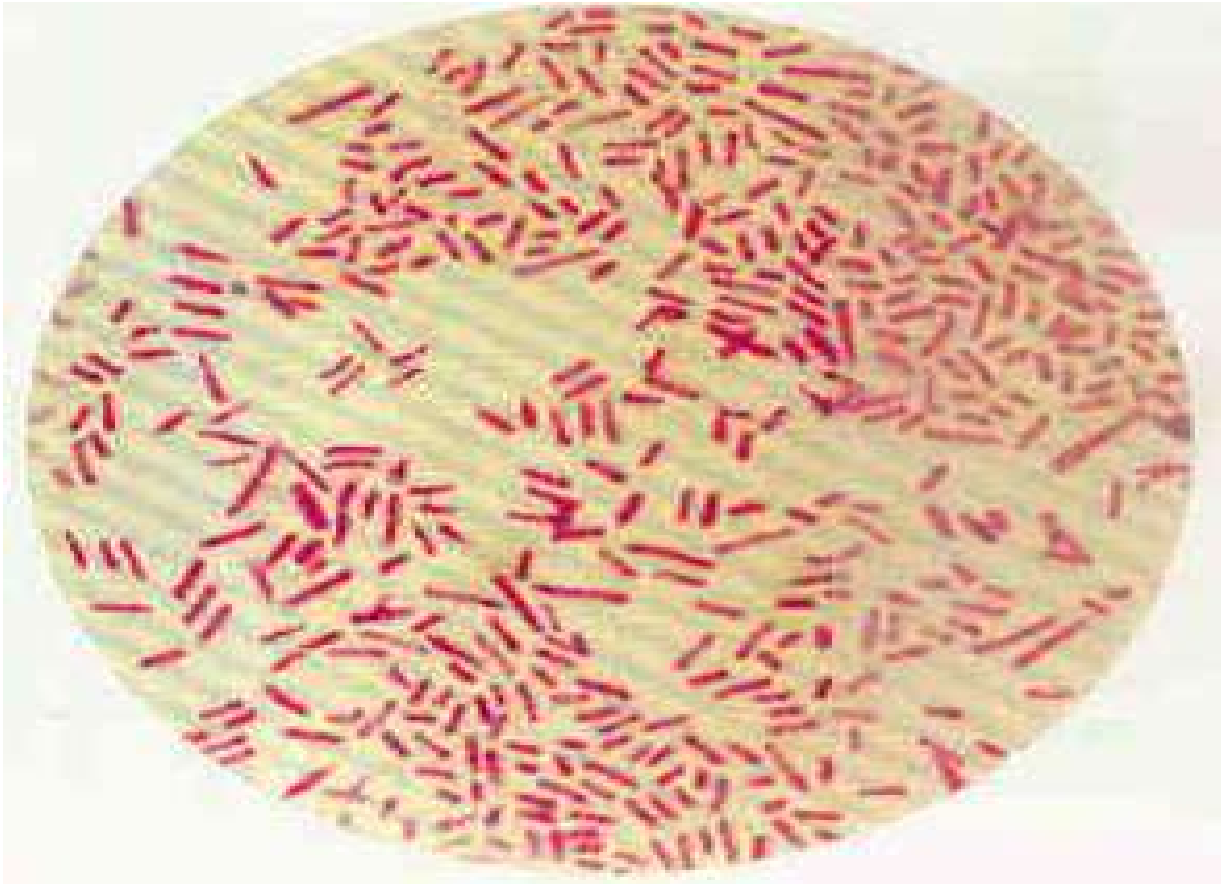
**Streptococcus pneumoniae in sputum by
Gram stain**



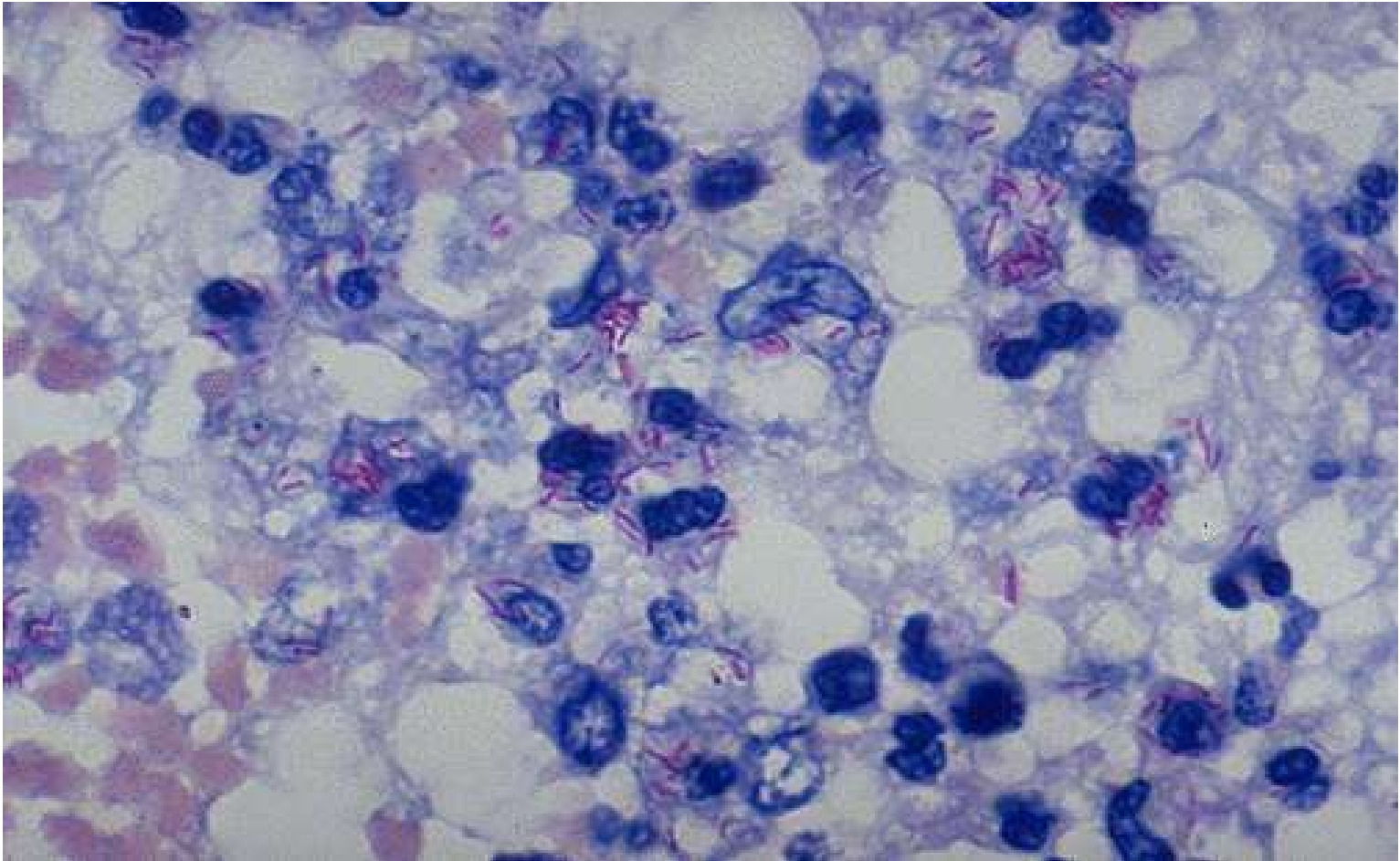
Neisseria in urethral discharge by Gram stain



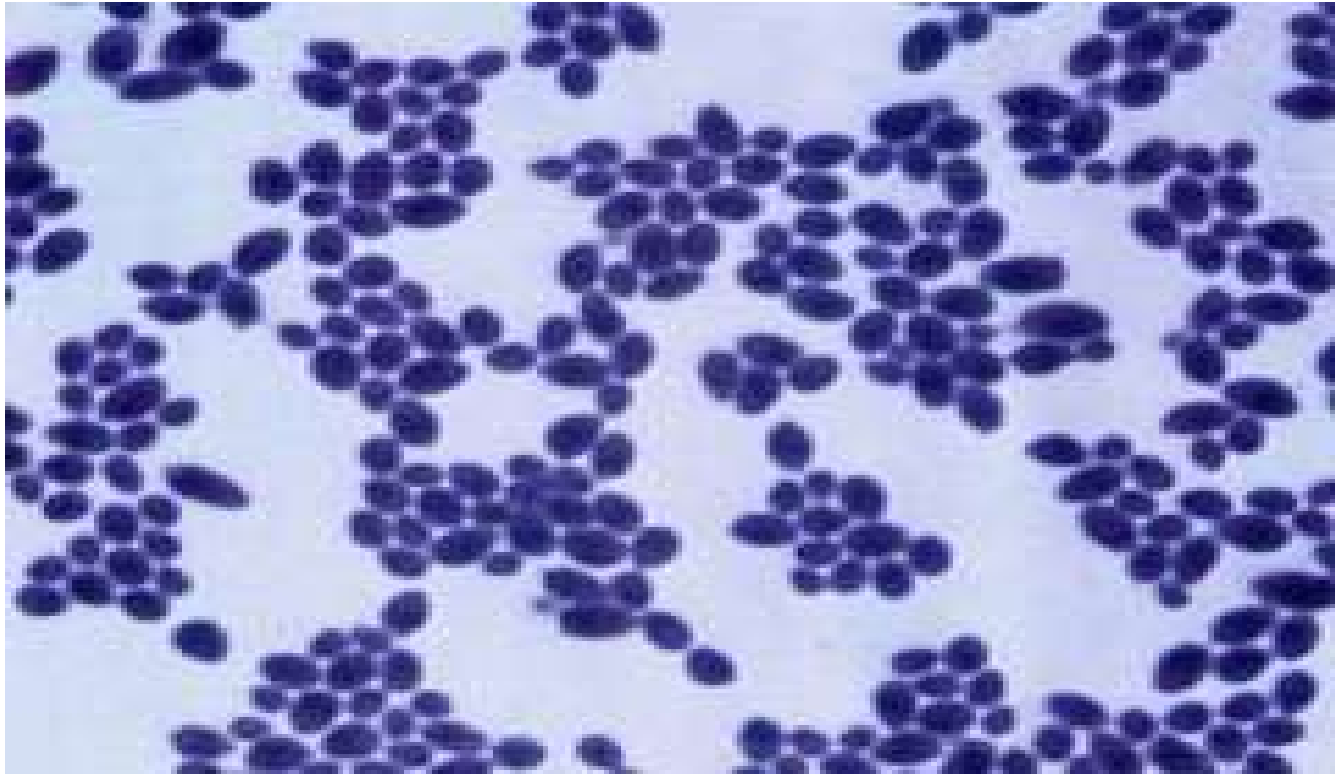
Gram positive bacilli in culture by Gram stain



Gram negative bacilli in culture by Gram stain



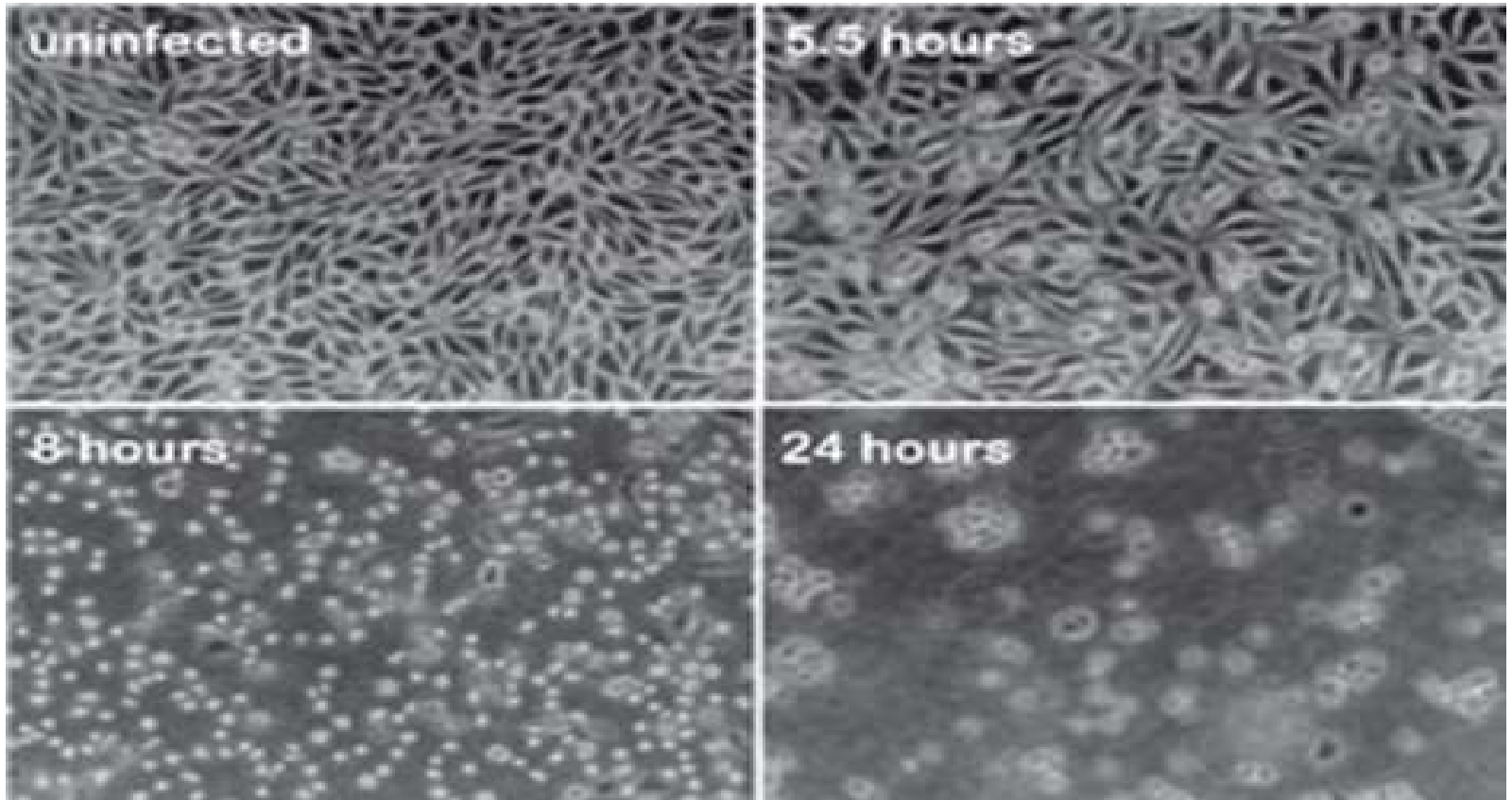
• **Mycobacterium tuberculosis (T.B) in sputum by ZN stain**



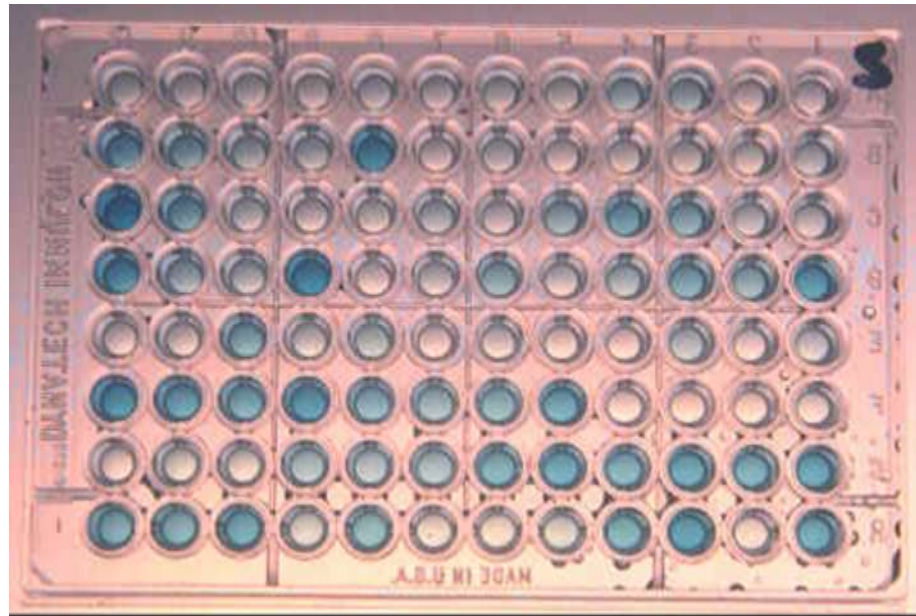
Candida in culture by Gram stain



Candida in tissue by Lactophenol blue



CPE of viruses



Microtitration plate



Sharp container



Sterile cotton swab



Sterile urine container

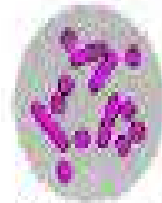


Autoclave



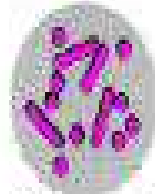
Bacteriological loop

Crystal Violet



All purple

Iodine



All purple

Alcohol



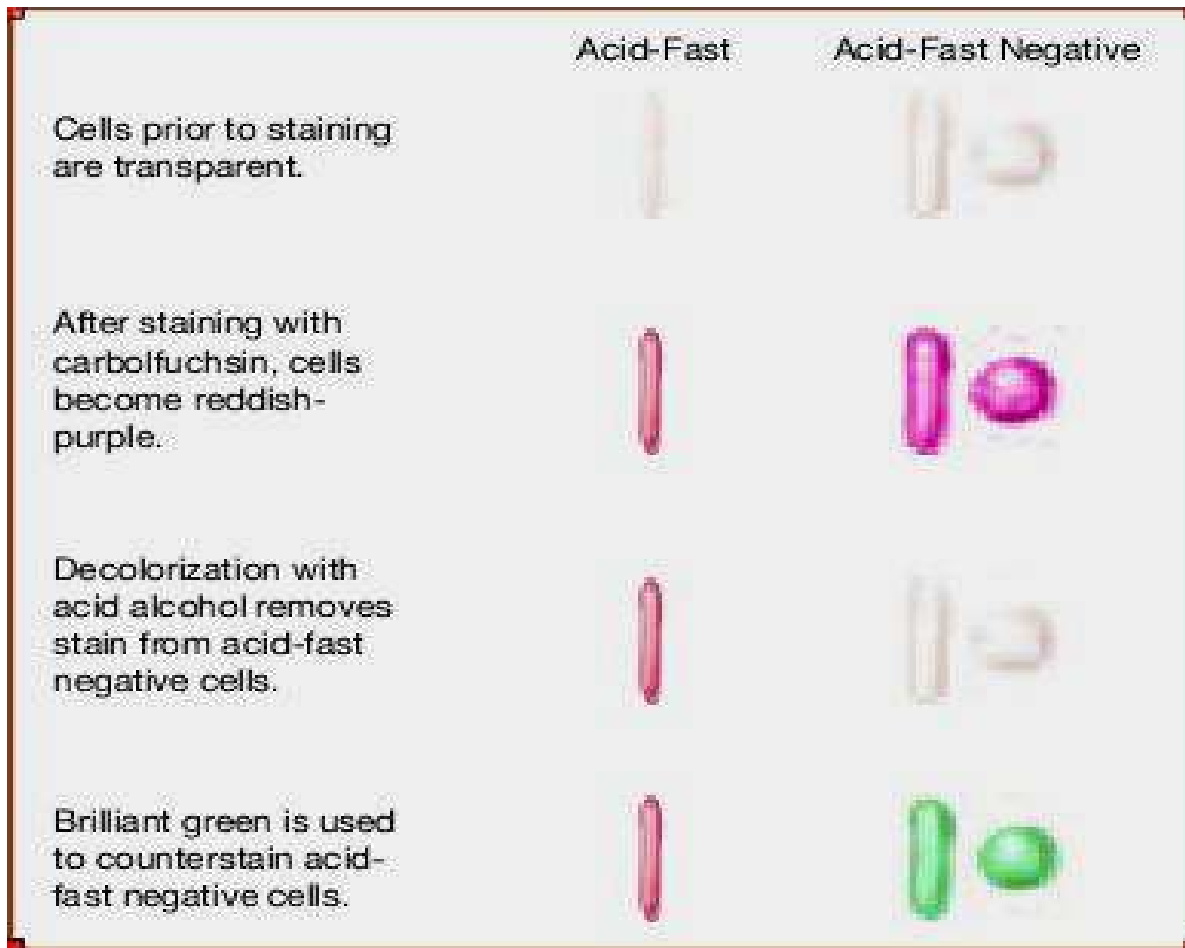
G+ = purple
G- = colorless

Safranin



G+ = purple
G- = red

Gram Stain procedure



ZN stain procedure



Anaerobic gas pack system