

Bishop score



Overview

Definition of Bishop Score

Components of Bishop Score

Scoring

Interpretation

Definition:

Bishop score is a pre-labor scoring system used to rate the readiness of the cervix for induction of labor.

The physician assess the Bishop's Score from a vaginal examination when the woman is between 38 and 41 weeks .

Components

The total score is calculated by assessing the following five components on manual vaginal examination by a trained professional:

- Cervical effacement
- Fetal station
- Consistency
- Cervical dilation
- Cervical position

Effacement

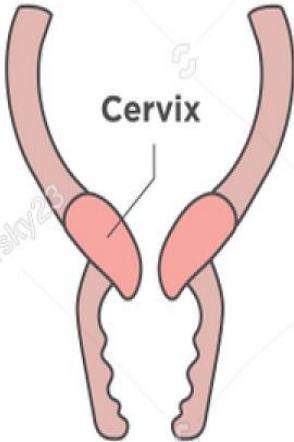
is the thinning or shortening of the cervix expressed as a percentage of the whole cervix. Zero percent effacement means the cervix is a normal (pre-labor length). 50% percent effaced means the cervix is at half of the expected length. If the cervix is 100% effaced, it is paper thin.

Effacement

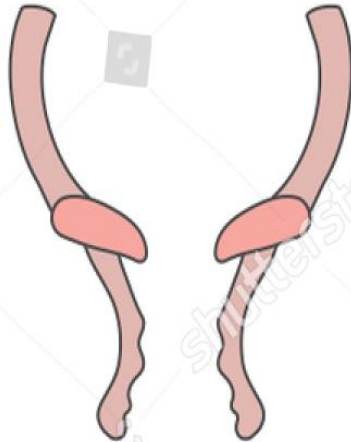
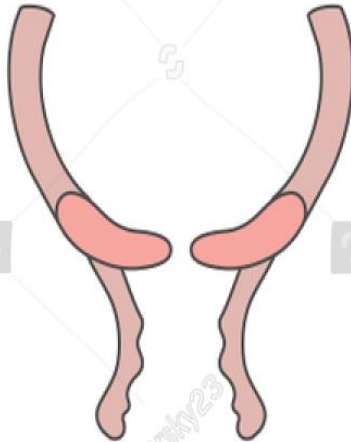
BISHOP SCORE EFFACEMENT



Before labor:
0% effacement



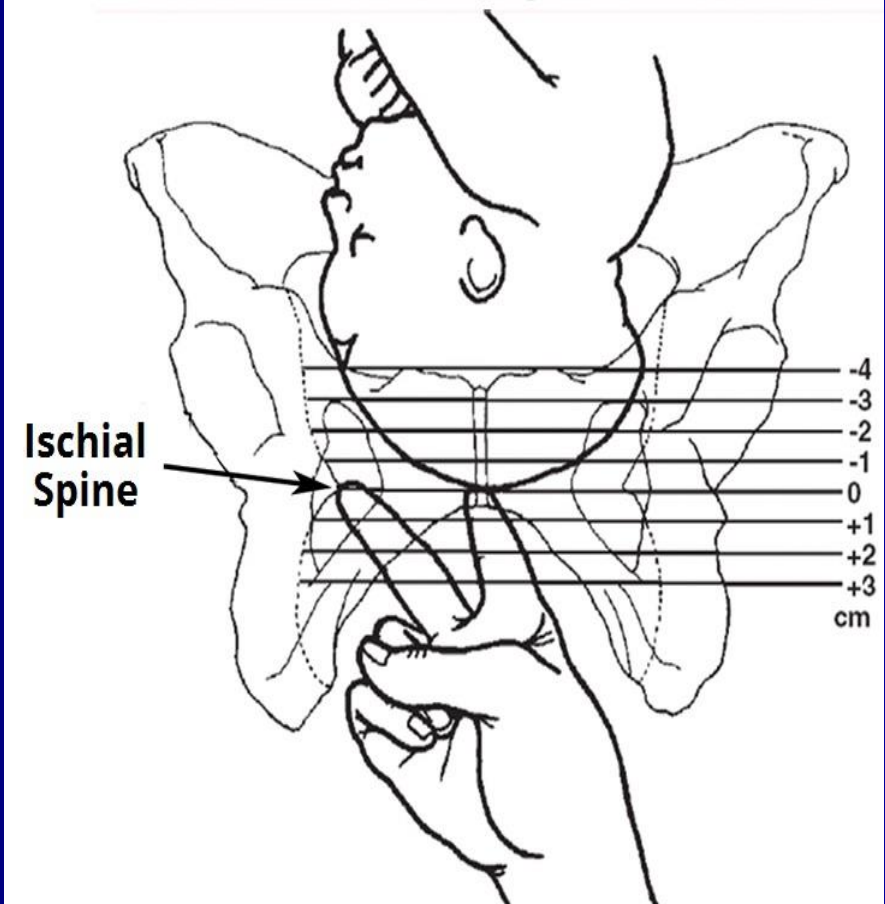
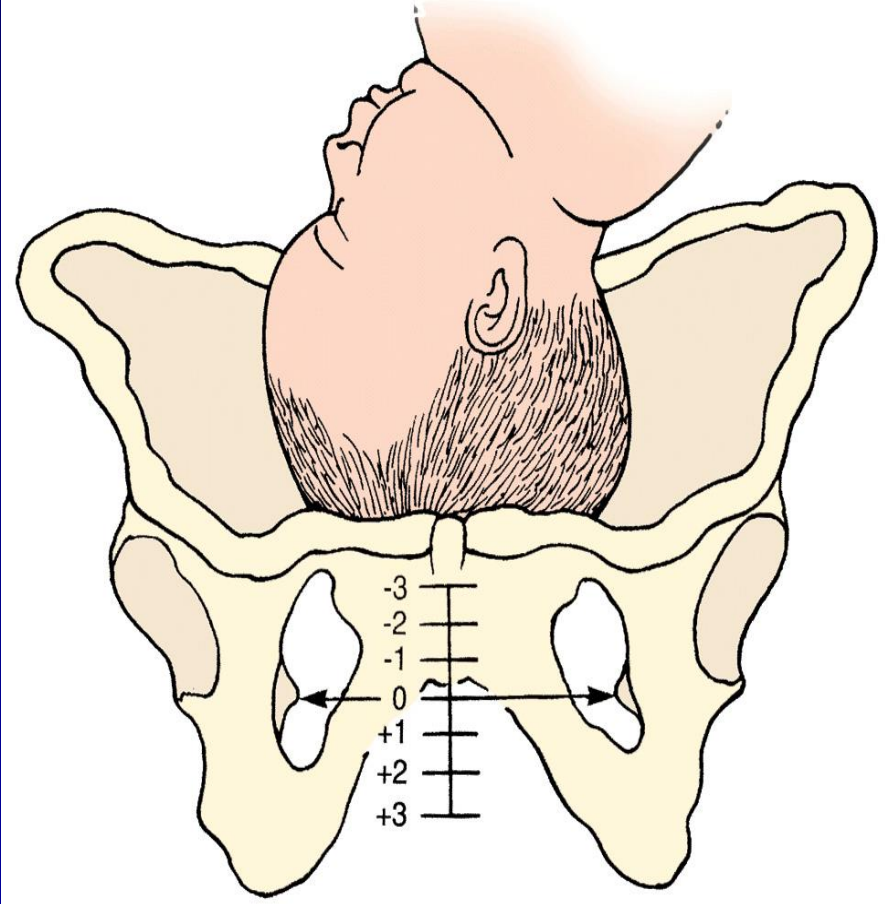
Early effacement:
30%



Fetal station

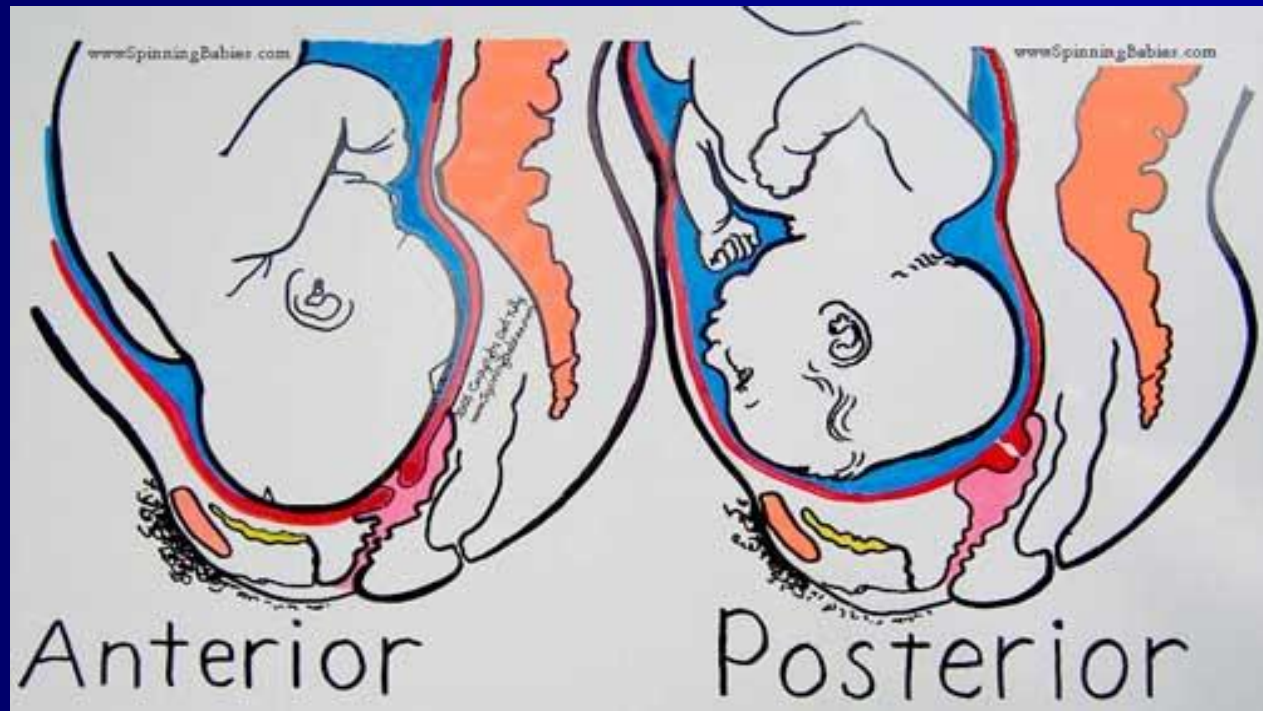
is the position of the fetal head in relation to the ischial spines of the maternal pelvis. The ischial spines are halfway between the pelvic inlet and outlet. At zero station, the fetal head is at the level of the ischial spines. the station changes from -3, -2, -1, 0, +1, +2, +3.

Fetal station



Cervical position

Position refers the anatomical location of the cervix in relation to the vagina.



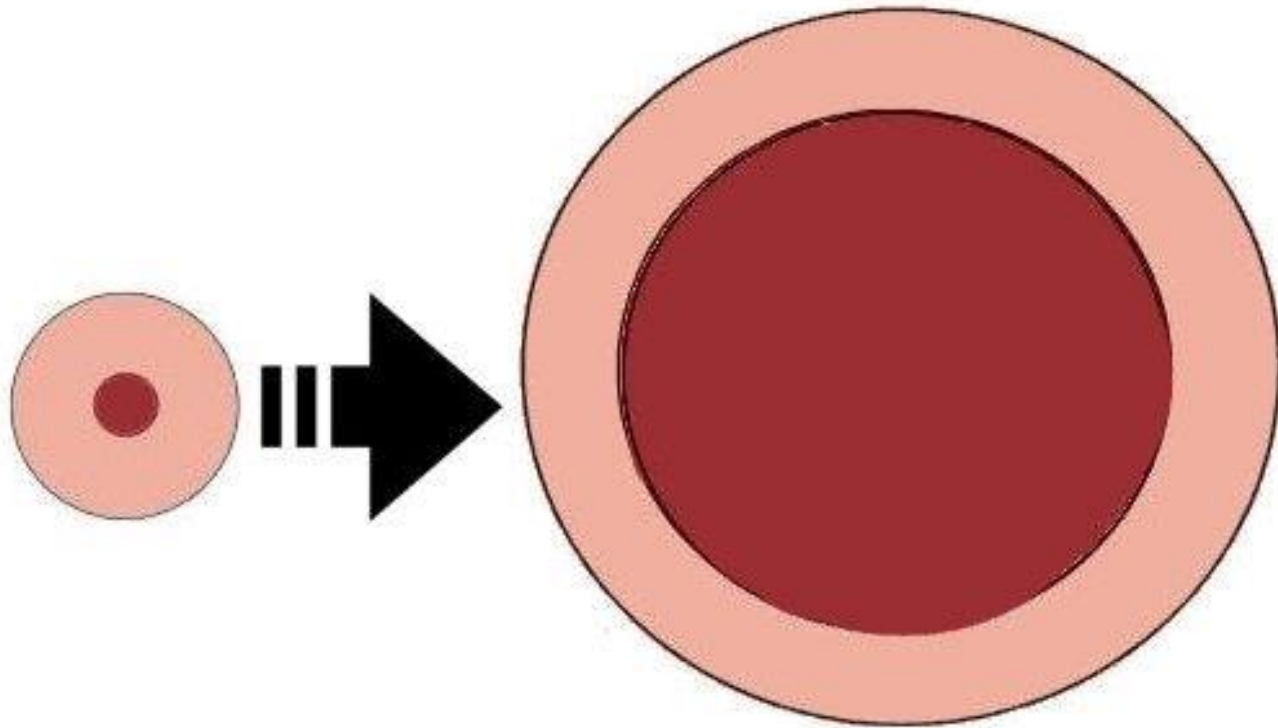
Cervical consistency

The consistency of the cervix refers to the feel of the cervix on the exam. A firm cervix has a consistency similar to the tip of the nose, while a soft cervix has a consistency similar to the lips of the oral cavity.

Cervical dilation

Cervical dilation is the measure of how dilated the cervix is in centimeters. This is performed by measuring the diameter of the stretched cervix, i.e., closed, 2 cm, 7 cm, 10 cm.

Cervical dilation

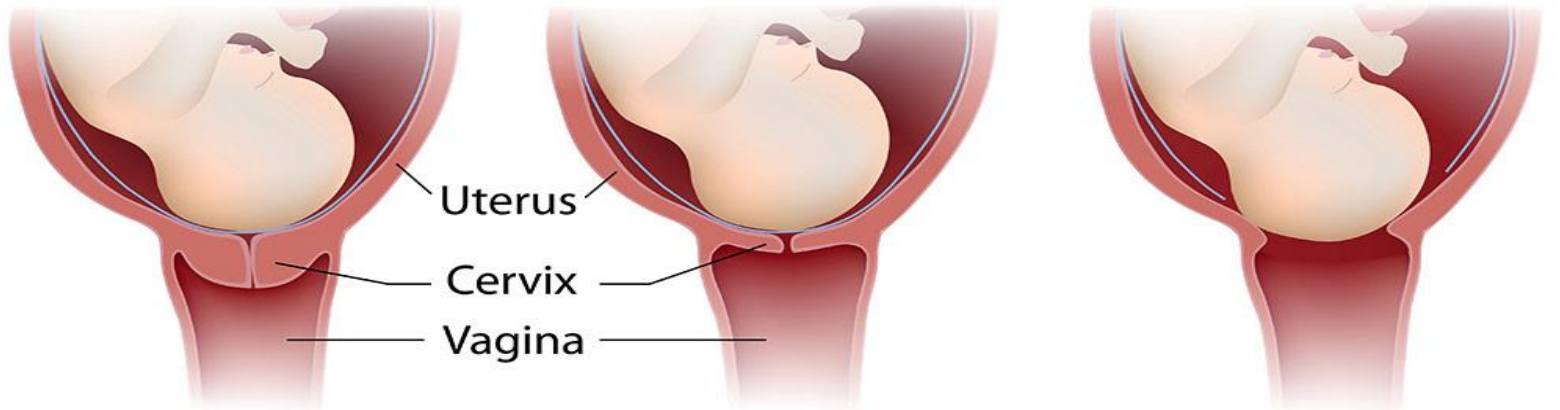


Closed

6 cm

Cervical dilation

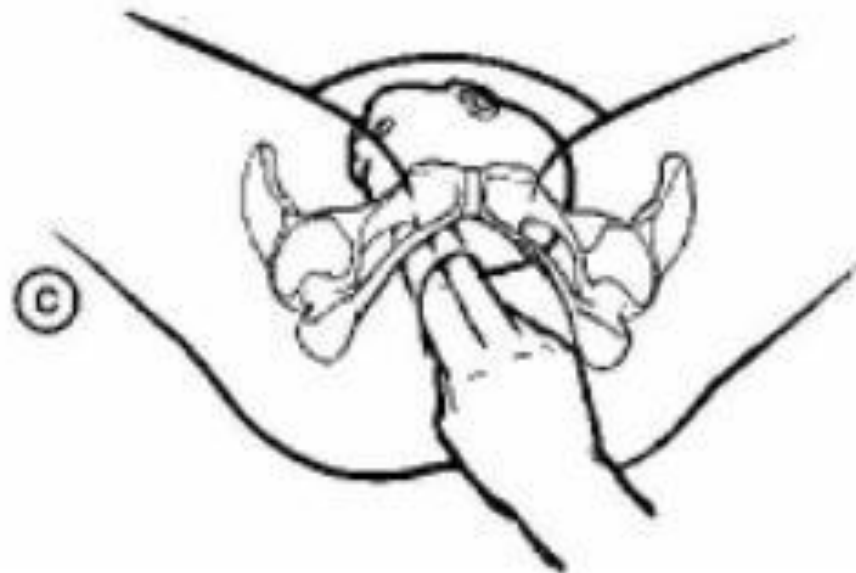
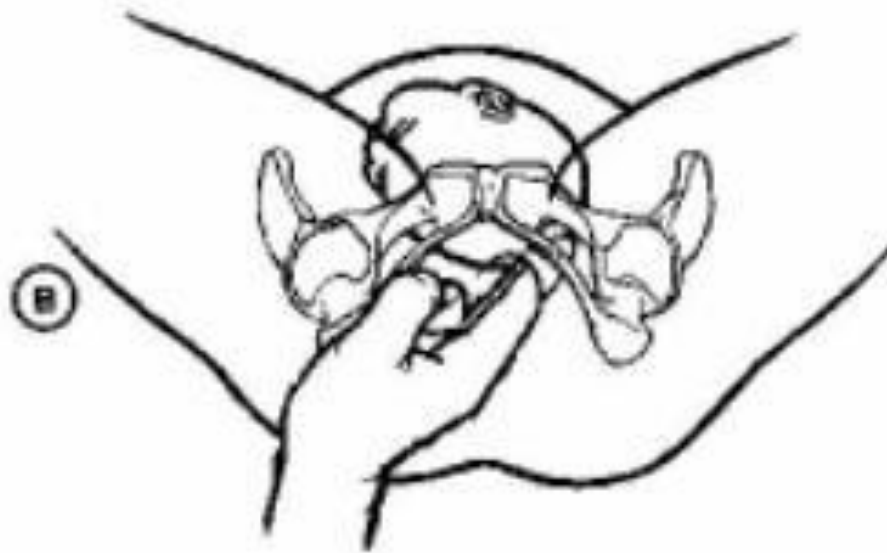
Cervical Effacement and Dilatation



not effaced,
not dilated

fully effaced,
1 cm dilated

fully effaced,
fully dilated to 10cm



Scoring

criteria	SCORE	0	1	2	3
Cervix Dilatation		closed	1–2 cm	3–4 cm	5+ cm
Cervix Effacement		– 30%	40 –50%	60–70%	80+%
Fetal Station		-3	-2	-1	+1
Cervix Position		Posterior	Mid-position	Anterior	
Cervix Consistency		Firm	Moderately Firm	Soft	

Interpretation

- **Total score = 13**
- (0-4): unfavorable cervix or "unripe", need induction.
- (5-9): need augmentation
- (10-13): favorable cervix or "ripe", need nothing



Thank You