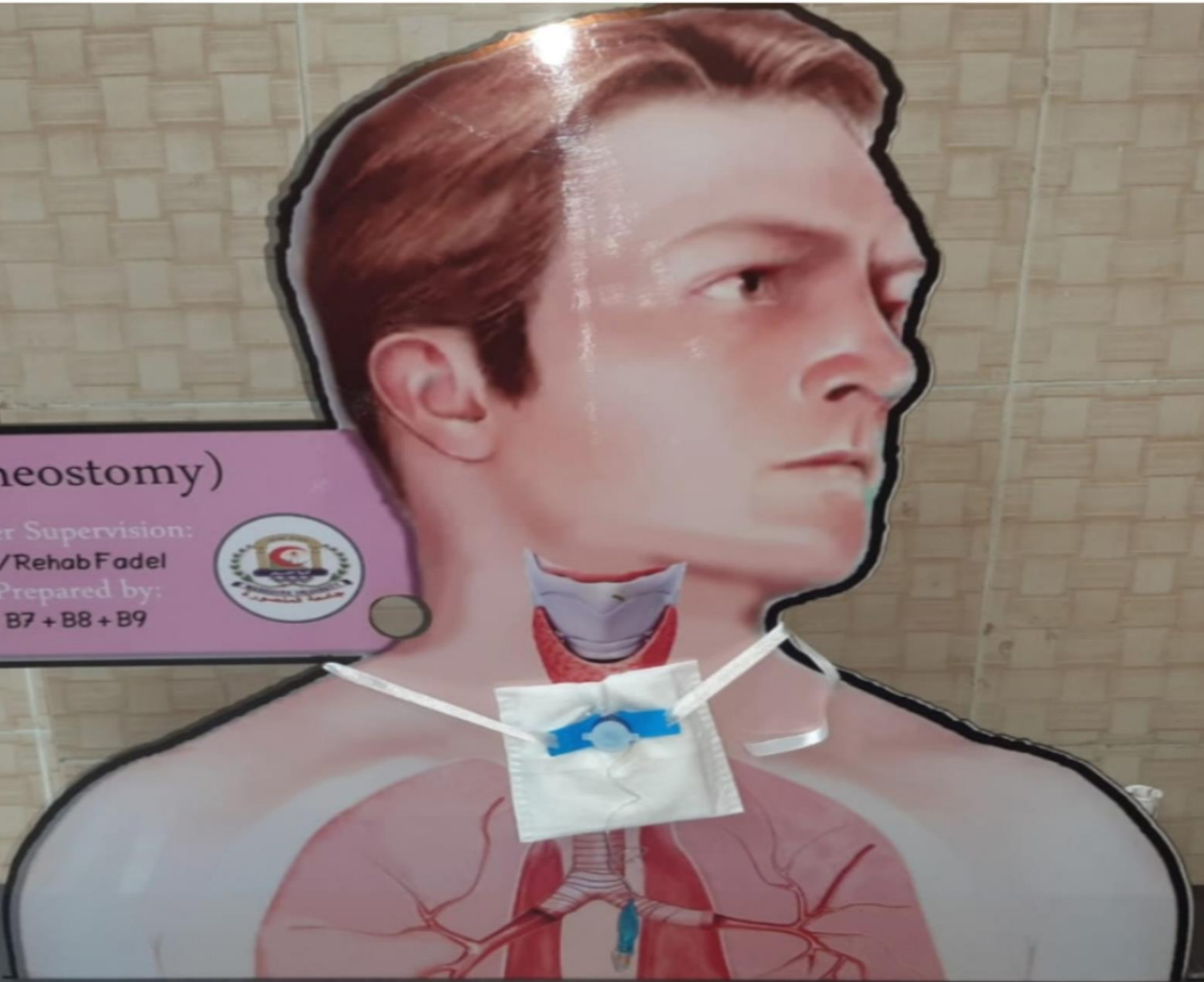
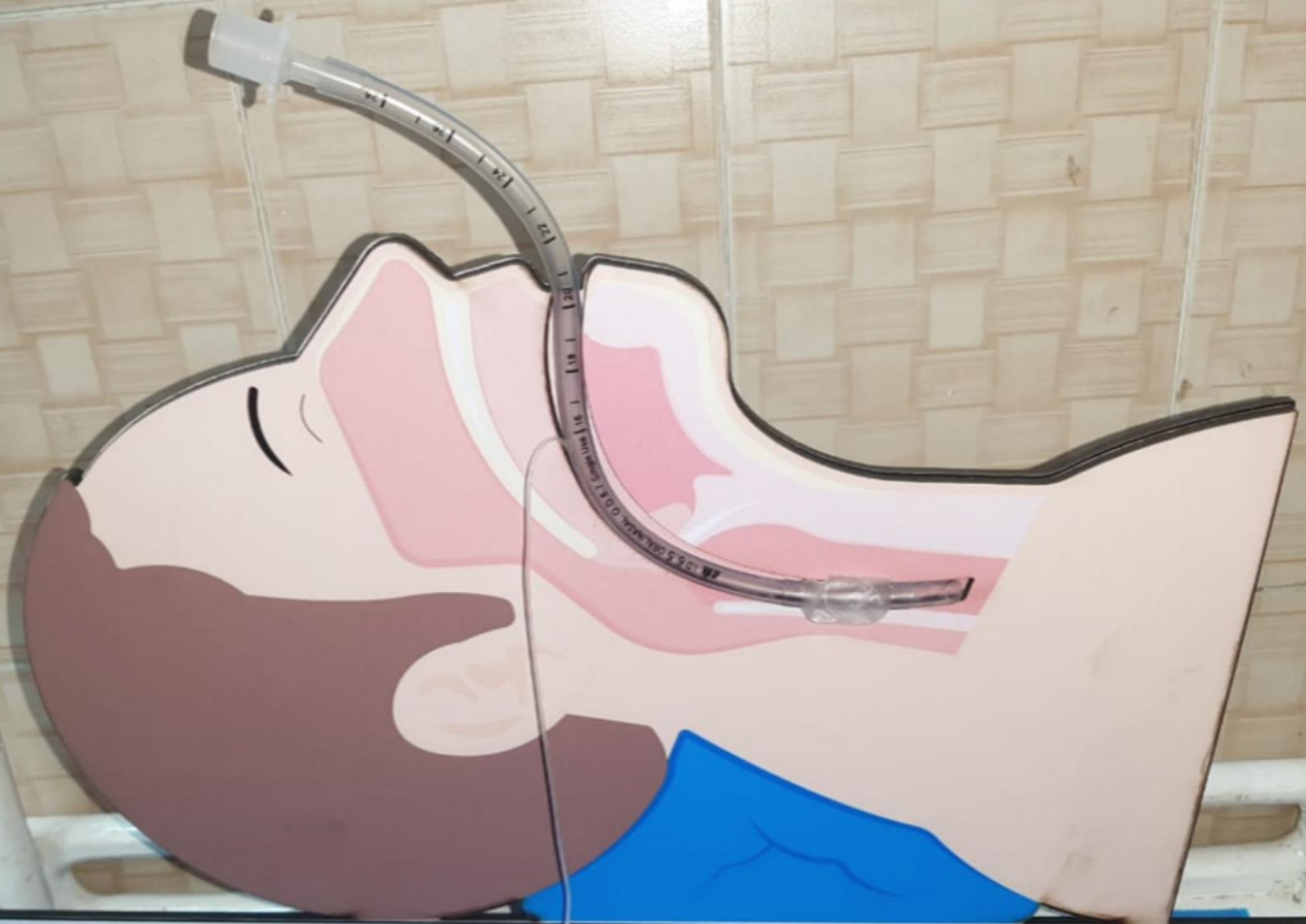


(Tracheostomy)

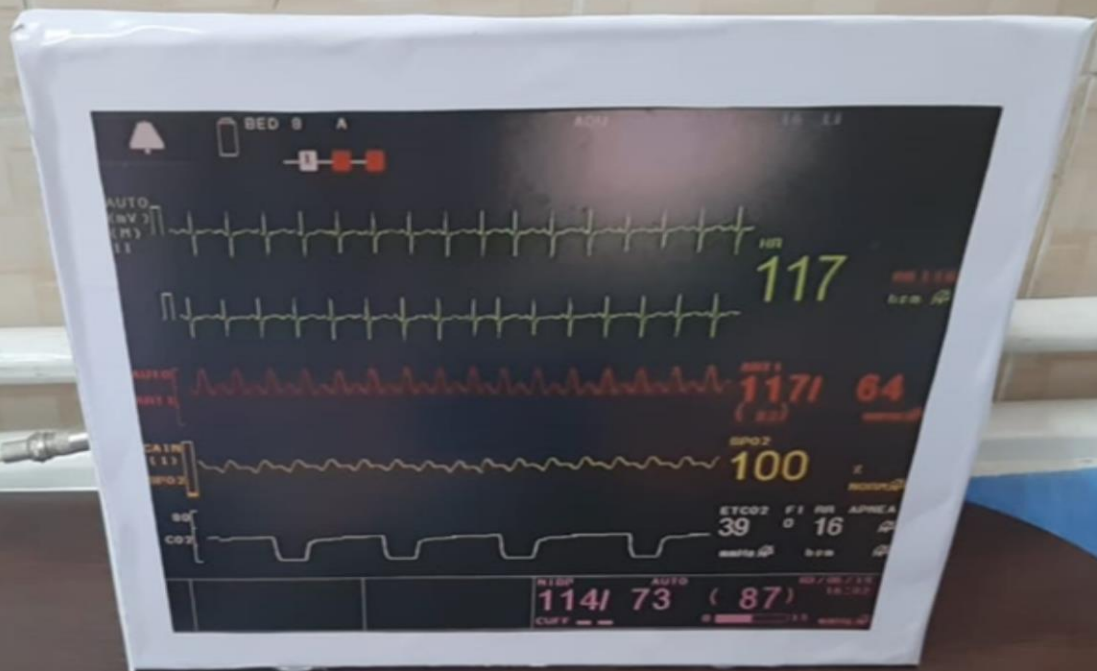
Under Supervision:
Dr/Rehab Fadel
Prepared by:
B7 + B8 + B9





Cuff Pressure Manometer
Under Supervision Dr:Noura Mohamed Othman
Prepared by Group:A7_A8_A9





(Capnograph)

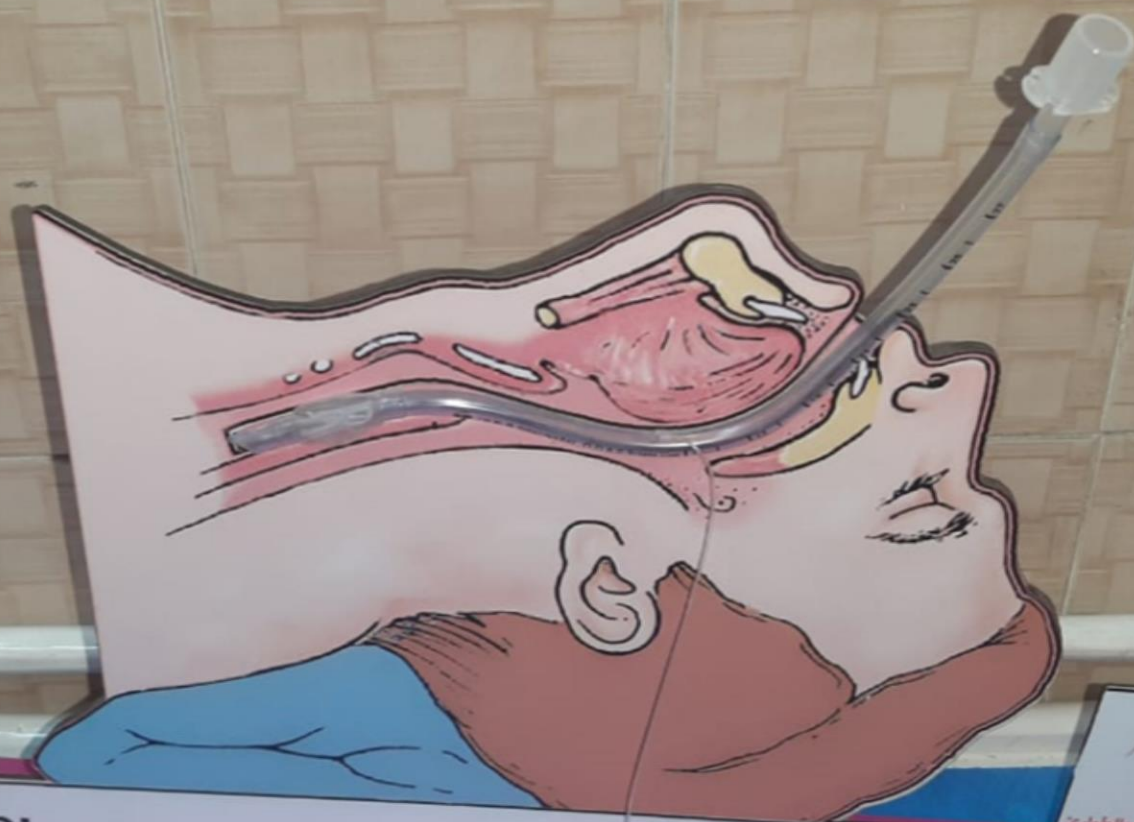
Under Supervision:

Dr/ Eman Rashad

Prepared by:

B1 + B2 + B3





كلية التمريض جامعة المنصورة

By Group:
A10,A11,A12

Endotracheal Tube

Under Supervision:
Dr/ Noura Mohamed Othman

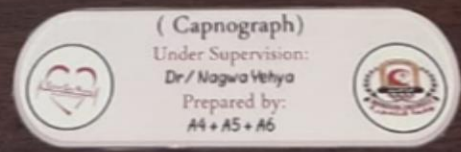


قسم التمريض العناية الحرجة والحظوري



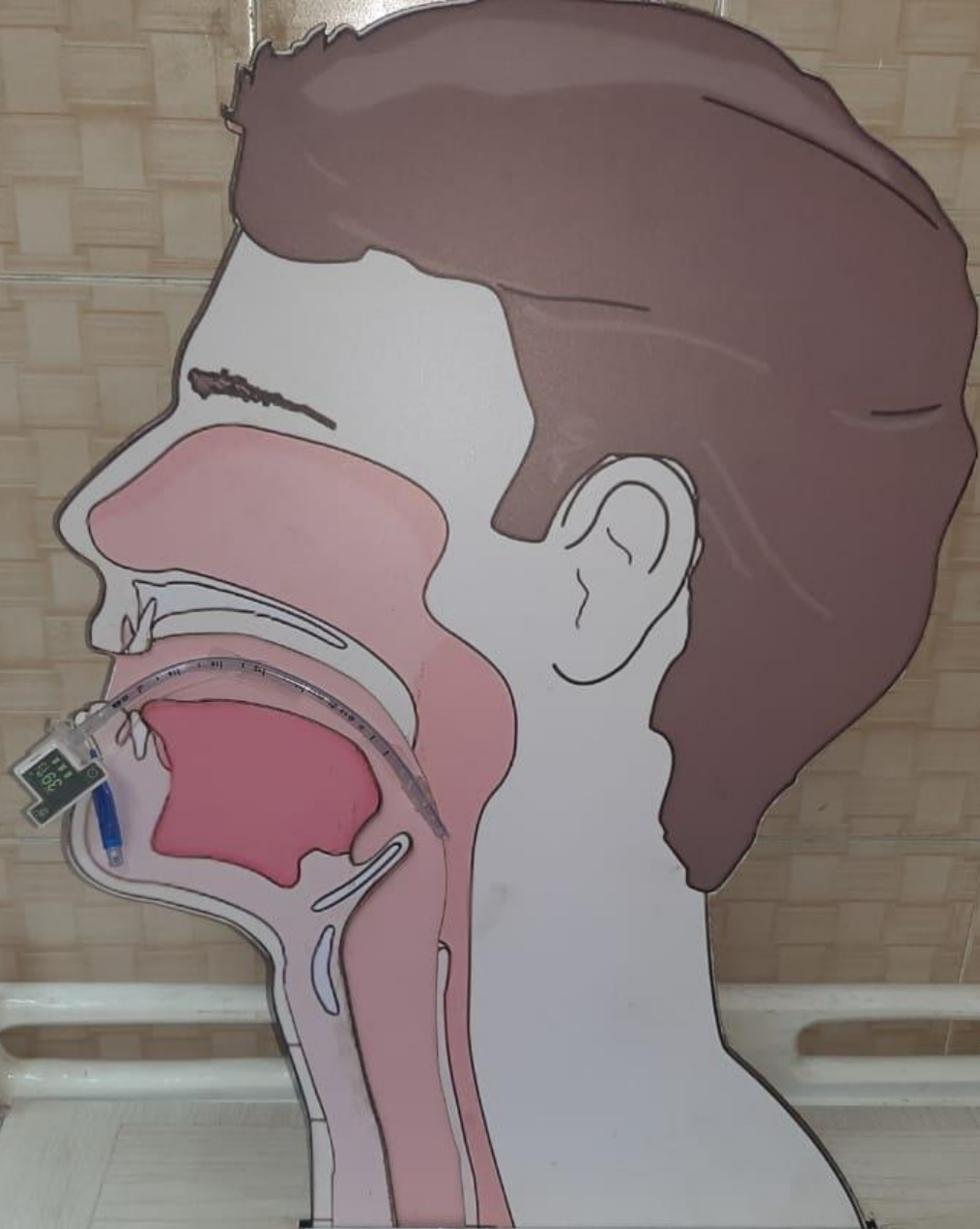
The notebook cover features a blue border and contains the following text and graphics:

- Logo:** A heart-shaped logo with a red outline and a white interior, containing a stylized figure.
- Text:** "Critical Care and Emergency Nursing Department, Fort St. John's" (partially visible).
- Logo:** A circular logo with a red border and a white interior, containing a stylized figure.
- Text:** "Ministry of Health, Faculty of Health Sciences, 2013/2014" (partially visible).
- Section Header:** "Capnograph" in a large, bold, serif font.
- Image:** A photograph of a blue capnograph sensor connected to a white tube.
- Text:** "Under Supervision: Dr/ Nagwa Yehya" and "Prepared by: A4 + A5 + A6".



A white, rounded rectangular label with a blue border, containing the following text and graphics:

- Section Header:** "(Capnograph)"
- Text:** "Under Supervision: Dr/ Nagwa Yehya" and "Prepared by: A4 + A5 + A6".
- Logo:** A heart-shaped logo with a red outline and a white interior, containing a stylized figure.
- Logo:** A circular logo with a red border and a white interior, containing a stylized figure.

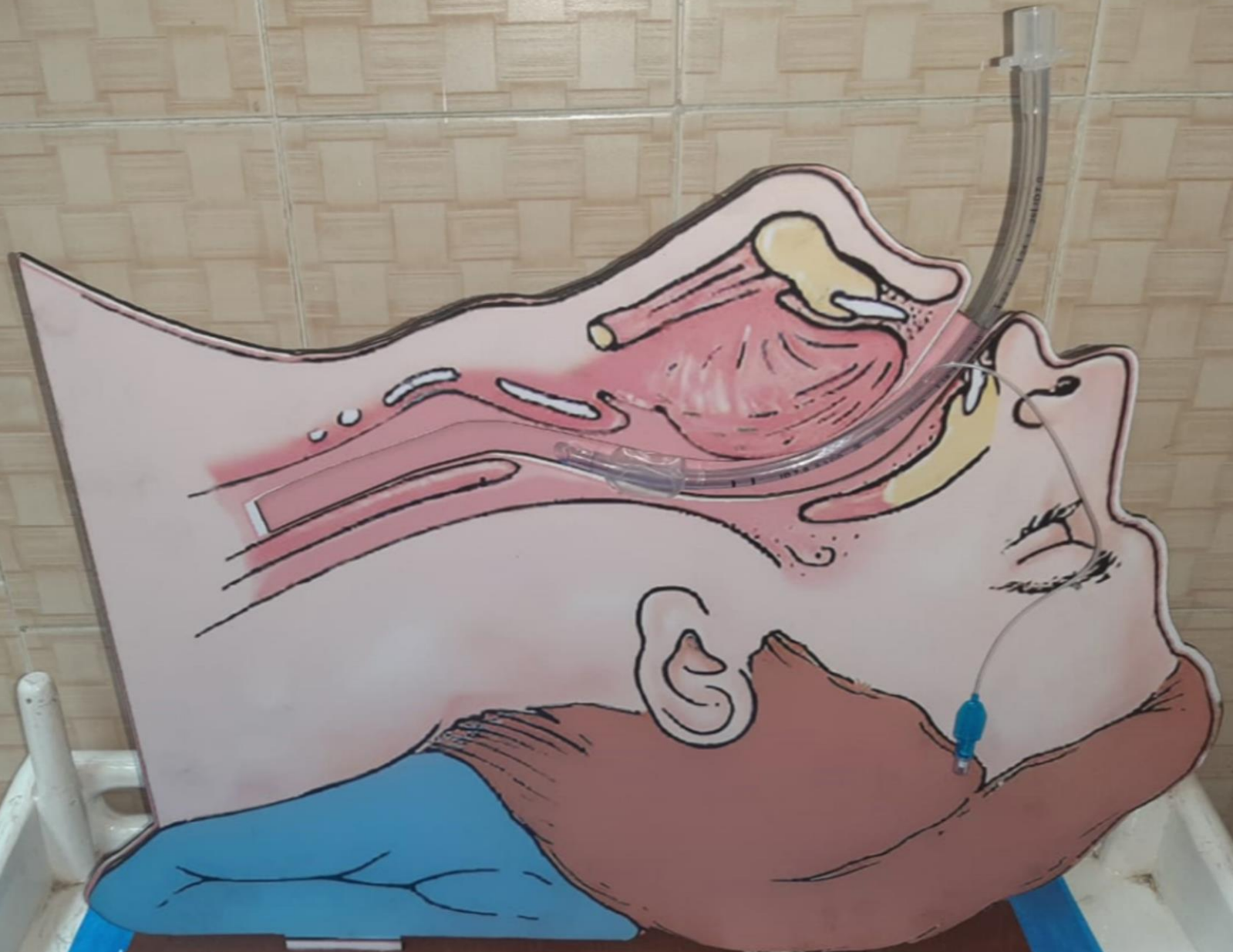


Under supervision عمل جروب

Dr/Ayat Mohamed C10,C11,C12




under supervision /Dr :Afnan Attia
Cuff Pressure Manometer
group:D1/D2/D3



Prepared by/Group 1,2,3

Under Supervision of/ Nagwa Yehya

The image shows two identical mannequin heads positioned side-by-side. Each head is wearing a white neck brace with a blue horizontal band and a blue circular sensor. A green ECG lead is attached to the sensor on each. The mannequins are placed on a blue surface against a light-colored tiled wall. Below each mannequin is a white identification card.

Under supervision
Dr/ Aya Elhousseini
Prepared by group
(CI&C2&C3)

Under supervision
Dr/ Aya Elhousseini
Prepared by group
(CI&C2&C3)





(Left Forelimb Arteriovenous)
Ligament Suspensory
Bony Growth Monitor
Designed by
M. J. C. 1988 - 1989

