

Mansoura University
Faculty of Science
Zoology Department



May 2014
Fourthyear- Environmental Science
Subject: Taxidermy
Date: June 2014
Time Allowed: 2hr

Answer the following questions

Question 1 :

(15 Marks)

Give notes on the embalming of Amphibians And Mammals

Question Two:

(25 Marks)

How you can prepare each of the following:

- a- A blood film stained with haematoxylin and eosin
- b- A blood film stained with Giemsa
- c- Paraffin wax sections
- d- A chitinous whole mount specimen
- e- Staining of paraffin wax sections with haematoxylin and eosin

Question 3 :

(15 Marks)

What do you know about the modern Embalming and Biological museums with their types.

With best wishes

Prof. Dr. Mohamed Fathy Abdel-Aal Mansour

المستوى الرابع - علوم (البيئية) - مزارع - مادة - ٤٤ - ٤١٣

Mansura university.
Faculty of sciences
Zoology Department
Time allow: 2 hrs



Final examintim (may 2014
for fourth-- students
(Enviromental sciences)
subject:- fish culture
Date :7/6/2014

Answer the following questions:

- I - Explain : pre-requisites of a suitable site for a fish pond .
- II- write on : Different systems for fish farming management .
- III- Choose three of four : Discuss :
- Catfish and Tilapia farming .
 - Different types of fresh water fish.
 - Types of fish ponds .
 - Where to build a fish pond ?

Good regards .

Prof. Dr: Ahmed ElW-Hagras.



Answer All Questions
Part I Immunology

Question 1

(15 marks)

Write short notes on:

- Clonal selection theory.
- Complement activation pathways.

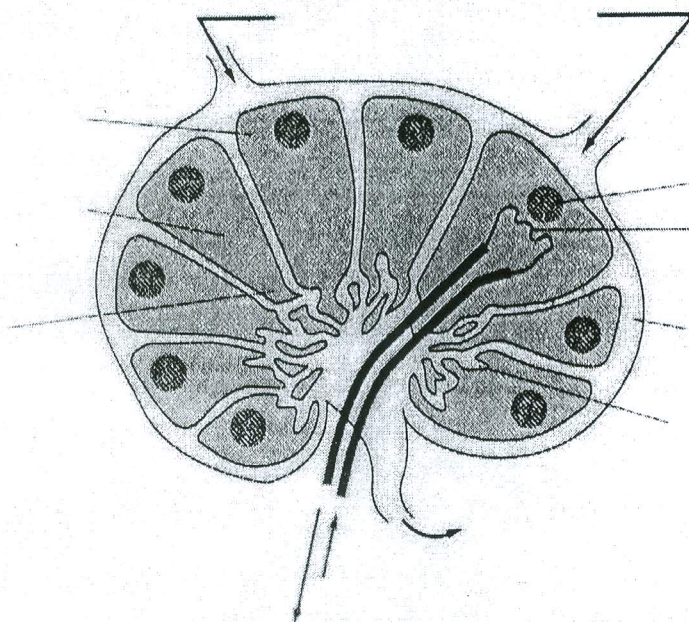
Question 2

(15 marks)

A- Complete:

- cells develop in the thymus, whereas, cells develop in the bone marrow.
- is the only antibody that can pass placenta.
- Antibody roles include, and
- Intact skin, mucous membranes and stomach HCl are among the components of immunity.
- complement component creates a hole in the cell membrane of the pathogen's cell.

B- Identify, draw and put the labels for the following diagram:



Part II Molecular Biology

Q. 3: Write on the Following Statements:

(20 marks, 5 Marks each)

A: *Introns and Exons.*

B: *Types of Restriction endonucleases enzymes.*

C: *Cloning Vectors.*

D: *Types of RNA.*

Q. 4: Discuss

(10 marks, 5 Marks each)

A: *Gel electrophoresis separates DNA molecules.*

B: *Models for DNA Replication.*

Our best wishes

Prof. Dr. Sherif Helmy Abdeen

Dr. Sayed Kamel Areida

Prof. Dr. Nariman K Badr El Din

Dr. Mohamed F. Abo El Nour